

Anti-GAS 6 antibody [RM0084-6J2] ab86059

画像数 1

製品の概要

製品名	Anti-GAS 6 antibody [RM0084-6J2]
製品の詳細	Rat monoclonal [RM0084-6J2] to GAS 6
由来種	Rat
アプリケーション	適用あり: WB
種交差性	交差種: Mouse
免疫原	Recombinant full length Mouse protein
ポジティブ・コントロール	WB: Mouse embryonic tissue
特記事項	<p>The Life Science industry has been in the grips of a reproducibility crisis for a number of years. Abcam is leading the way in addressing this with our range of recombinant monoclonal antibodies and knockout edited cell lines for gold-standard validation. Please check that this product meets your needs before purchasing.</p> <p>If you have any questions, special requirements or concerns, please send us an inquiry and/or contact our Support team ahead of purchase. Recommended alternatives for this product can be found below, along with publications, customer reviews and Q&As</p>

製品の特性

製品の状態	Liquid
保存方法	Shipped at 4°C. Upon delivery aliquot and store at -20°C or -80°C. Avoid repeated freeze / thaw cycles.
バッファー	Constituent: PBS
精製度	Protein A/G purified
特記事項(精製)	The IgG fraction of culture supernatant was purified by Protein A/G affinity chromatography.
ポリ/モノ	モノクローナル
クローン名	RM0084-6J2
アイソタイプ	IgG2

アプリケーション

The Abpromise guarantee

Abpromise保証は、次のテスト済みアプリケーションにおけるab86059の使用に適用されます

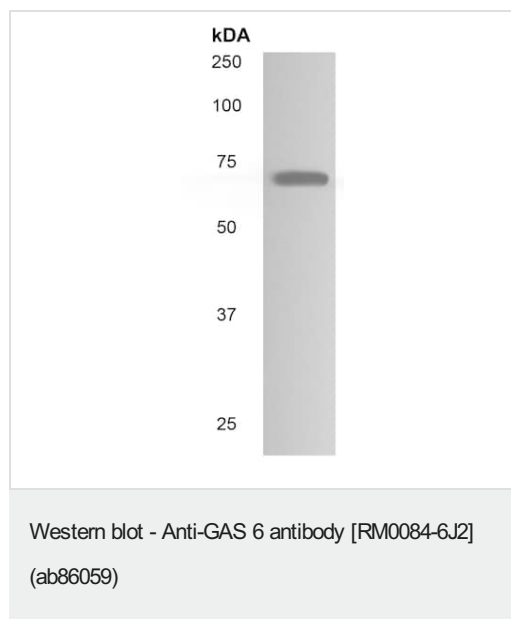
アプリケーションノートには、推奨の開始希釈率がありますが、適切な希釈率につきましてはご検討ください。

アプリケーション	Abreviews	特記事項
WB		1/500 - 1/1000. Predicted molecular weight: 80 kDa.

ターゲット情報

機能	Ligand for tyrosine-protein kinase receptors AXL, TYRO3 and MER whose signaling is implicated in cell growth and survival, cell adhesion and cell migration. GAS6/AXL signaling plays a role in various processes such as endothelial cell survival during acidification by preventing apoptosis, optimal cytokine signaling during human natural killer cell development, hepatic regeneration, gonadotropin-releasing hormone neuron survival and migration, platelet activation, or regulation of thrombotic responses.
組織特異性	Plasma. Isoform 1 and isoform 2 are widely expressed. Isoform 1 is the predominant form in spleen.
配列類似性	Contains 4 EGF-like domains. Contains 1 Gla (gamma-carboxy-glutamate) domain. Contains 2 laminin G-like domains.
翻訳後修飾	Isoform 1 is proteolytically processed after secretion to yield a N-terminal 36 kDa protein and a C-terminal 50 kDa protein including the laminin G-like domains which activates AXL. Gamma-carboxyglutamate residues are formed by vitamin K dependent carboxylation. These residues are essential for the binding of calcium.
細胞内局在	Secreted.

画像



Anti-GAS 6 antibody [RM0084-6J2] (ab86059) at 1/500 dilution +
Mouse embryonic tissue lysate

Predicted band size: 80 kDa

Please note: All products are "FOR RESEARCH USE ONLY. NOT FOR USE IN DIAGNOSTIC PROCEDURES"

Our Abpromise to you: Quality guaranteed and expert technical support

- Replacement or refund for products not performing as stated on the datasheet
- Valid for 12 months from date of delivery
- Response to your inquiry within 24 hours

- We provide support in Chinese, English, French, German, Japanese and Spanish
- Extensive multi-media technical resources to help you
- We investigate all quality concerns to ensure our products perform to the highest standards

If the product does not perform as described on this datasheet, we will offer a refund or replacement. For full details of the Abpromise, please visit <https://www.abcam.co.jp/abpromise> or contact our technical team.

Terms and conditions

- Guarantee only valid for products bought direct from Abcam or one of our authorized distributors