


Anti-GAPDH antibody - Loading Control ab157156

★★★★★ [2 Abreviews](#) [8 References](#) [画像数 2](#)

製品の概要

製品名	Anti-GAPDH antibody - Loading Control
製品の詳細	Goat polyclonal to GAPDH - Loading Control
由来種	Goat
アプリケーション	適用あり: IHC-Fr, WB
種交差性	交差種: Mouse, Human 交差が予測される動物種: Rat, Sheep, Rabbit, Chicken, Guinea pig, Cow, Turkey, Pig, Xenopus laevis, Caenorhabditis elegans, Drosophila melanogaster, Zebrafish, Orangutan, Xenopus tropicalis 
免疫原	Synthetic peptide within Human GAPDH aa 175-225. The exact sequence is proprietary. Database link: P04406
ポジティブ・コントロール	293T, HeLa, Jurkat and mouse NIH 3T3 whole cell lysates.
特記事項	<p>The Life Science industry has been in the grips of a reproducibility crisis for a number of years. Abcam is leading the way in addressing this with our range of recombinant monoclonal antibodies and knockout edited cell lines for gold-standard validation. Please check that this product meets your needs before purchasing.</p> <p>If you have any questions, special requirements or concerns, please send us an inquiry and/or contact our Support team ahead of purchase. Recommended alternatives for this product can be found below, along with publications, customer reviews and Q&As</p>

製品の特性

製品の状態	Liquid
保存方法	Shipped at 4°C. Store at +4°C.
バッファー	pH: 7 Preservative: 0.09% Sodium azide Constituent: 99% Tris citrate/phosphate
精製度	pH 7 to 8 Immunogen affinity purified
特記事項(精製)	ab157156 was affinity purified using an epitope specific to GAPDH immobilized on solid support.
ポリ/モノ	ポリクローナル

アプリケーション

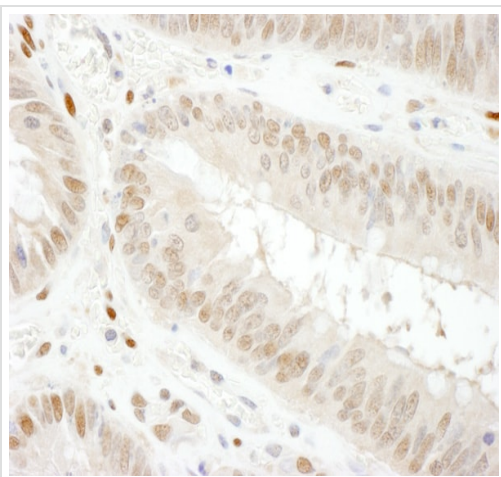
The Abpromise guarantee Abpromise保証は、次のテスト済みアプリケーションにおけるab157156の使用に適用されます
アプリケーションノートには、推奨の開始希釈率がありますが、適切な希釈率につきましてはご検討ください。

アプリケーション	Abreviews	特記事項
IHC-Fr		1/500 - 1/2000. Epitope retrieval with citrate buffer pH 6.0 is recommended for FFPE tissue sections.
WB	★☆☆☆☆ (2)	1/500 - 1/2500. Predicted molecular weight: 36 kDa.

ターゲット情報

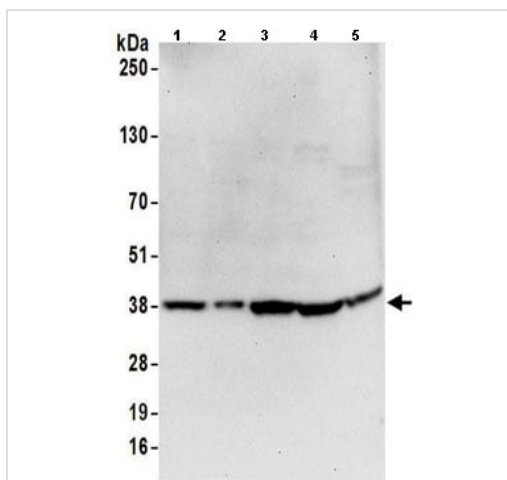
機能	Has both glyceraldehyde-3-phosphate dehydrogenase and nitrosylase activities, thereby playing a role in glycolysis and nuclear functions, respectively. Participates in nuclear events including transcription, RNA transport, DNA replication and apoptosis. Nuclear functions are probably due to the nitrosylase activity that mediates cysteine S-nitrosylation of nuclear target proteins such as SIRT1, HDAC2 and PRKDC (By similarity). Glyceraldehyde-3-phosphate dehydrogenase is a key enzyme in glycolysis that catalyzes the first step of the pathway by converting D-glyceraldehyde 3-phosphate (G3P) into 3-phospho-D-glyceroyl phosphate.
パスウェイ	Carbohydrate degradation; glycolysis; pyruvate from D-glyceraldehyde 3-phosphate: step 1/5.
配列類似性	Belongs to the glyceraldehyde-3-phosphate dehydrogenase family.
翻訳後修飾	S-nitrosylation of Cys-152 leads to interaction with SIAH1, followed by translocation to the nucleus. ISGylated.
細胞内局在	Cytoplasm > cytosol. Nucleus. Cytoplasm > perinuclear region. Membrane. Translocates to the nucleus following S-nitrosylation and interaction with SIAH1, which contains a nuclear localization signal (By similarity). Postnuclear and Perinuclear regions.

画像



Immunohistochemical analysis of frozen sections of human colon carcinoma tissue labelling GAPDH with ab157156 at 1/1000 (1µg/ml). Detection: DAB.

Immunohistochemistry (Frozen sections) - Anti-GAPDH antibody - Loading Control (ab157156)



Western blot - Anti-GAPDH antibody - Loading Control (ab157156)

All lanes : Anti-GAPDH antibody - Loading Control (ab157156) at 1 µg/ml

Lane 1 : 293T whole cell lysate at 50 µg

Lane 2 : 293T whole cell lysate at 15 µg

Lane 3 : HeLa whole cell lysate at 50 µg

Lane 4 : Jurkat whole cell lysate at 50 µg

Lane 5 : NIH 3T3 whole cell lysate at 50 µg

Developed using the ECL technique.

Predicted band size: 36 kDa

Exposure time: 30 seconds

Please note: All products are "FOR RESEARCH USE ONLY. NOT FOR USE IN DIAGNOSTIC PROCEDURES"

Our Abpromise to you: Quality guaranteed and expert technical support

- Replacement or refund for products not performing as stated on the datasheet
- Valid for 12 months from date of delivery
- Response to your inquiry within 24 hours

- We provide support in Chinese, English, French, German, Japanese and Spanish
- Extensive multi-media technical resources to help you
- We investigate all quality concerns to ensure our products perform to the highest standards

If the product does not perform as described on this datasheet, we will offer a refund or replacement. For full details of the Abpromise, please visit <https://www.abcam.co.jp/abpromise> or contact our technical team.

Terms and conditions

- Guarantee only valid for products bought direct from Abcam or one of our authorized distributors