




### Anti-gamma Tubulin antibody [TU-30] ab27074

★★★★★ [2 Abreviews](#) [57 References](#) [画像数 8](#)

#### 製品の概要

製品名	Anti-gamma Tubulin antibody [TU-30]
製品の詳細	Mouse monoclonal [TU-30] to gamma Tubulin
由来種	Mouse
特異性	This antibody recognises gamma tubulin expressed on stomach, kidney, liver, lung, muscle, ovary, heart, colon, thymus, brain.
アプリケーション	<b>適用あり:</b> Flow Cyt (Intra), WB, ICC/IF
種交差性	<b>交差種:</b> Mouse, Rat, Human <b>交差が予測される動物種:</b> Chicken, Cow, Pig, Plants 
免疫原	Synthetic peptide: EYHAATRPDYISWGTQ conjugated to KLH, corresponding to amino acids 434-449 of gamma Tubulin.  <a href="#">Run BLAST with</a>  <a href="#">Run BLAST with</a>
エピトープ	This antibody reacts with an epitope located in the C terminal region of gamma tubulin.
ポジティブ・コントロール	ICC/IF: P19C1 mouse embryonal carcinoma cells; Mouse fibroblasts; HEK293T cells; Rat prostate carcinoma cells. Flow Cyt (Intra): HeLa cells; MCF-7 cells. WB: Jurkat, HeLa, HEK293T, U87MG all with reducing conditions.
特記事項	<p>The Life Science industry has been in the grips of a reproducibility crisis for a number of years. Abcam is leading the way in addressing this with our range of recombinant monoclonal antibodies and knockout edited cell lines for gold-standard validation. Please check that this product meets your needs before purchasing.</p> <p>If you have any questions, special requirements or concerns, please send us an inquiry and/or contact our Support team ahead of purchase. Recommended alternatives for this product can be found below, along with publications, customer reviews and Q&amp;As</p>

#### 製品の特性

製品の状態	Liquid
保存方法	Shipped at 4°C. Store at +4°C short term (1-2 weeks). Upon delivery aliquot. Store at -20°C long term.
バッファー	pH: 7.40 Preservative: 0.097% Sodium azide

精製度	Protein A purified
特記事項 (精製)	This antibody was purified from hybridoma culture supernatant by affinity chromatography. Purity is > 95% (by SDS-PAGE).
ポリ/モノ	モノクローナル
クローン名	TU-30
アイソタイプ	IgG1

## アプリケーション

**The Abpromise guarantee**      **Abpromise保証は、次のテスト済みアプリケーションにおけるab27074の使用に適用されます**

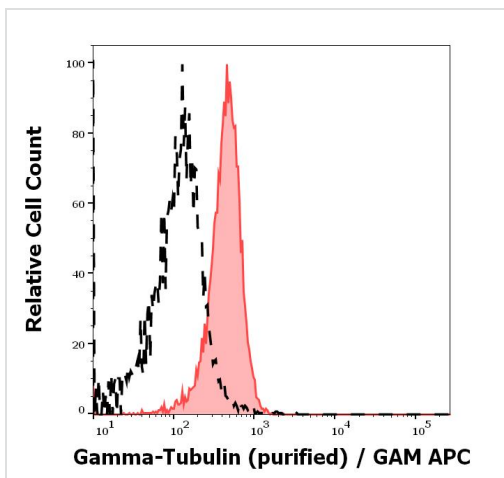
アプリケーションノートには、推奨の開始希釈率がありますが、適切な希釈率につきましてはご検討ください。

アプリケーション	Abreviews	特記事項
Flow Cyt (Intra)		Use 1 µg for 10 <sup>6</sup> cells. <b>ab170190</b> - Mouse monoclonal IgG1, is suitable for use as an isotype control with this antibody.
WB		Use a concentration of 1 - 2 µg/ml. Predicted molecular weight: 51 kDa. reducing conditions.
ICC/IF	★★★★★ (1)	Use a concentration of 1 - 2 µg/ml. Note: Fix cells for 10 min in methanol at -20°C and for 6 min in acetone at -20°C. Alternatively, fix cells directly in methanol for 10 min at -20°C or in acetone for 10 min at -20°C. After fixing cells, incubate for 45 minutes at room temperature. This antibody will only stain fixed cells.

## ターゲット情報

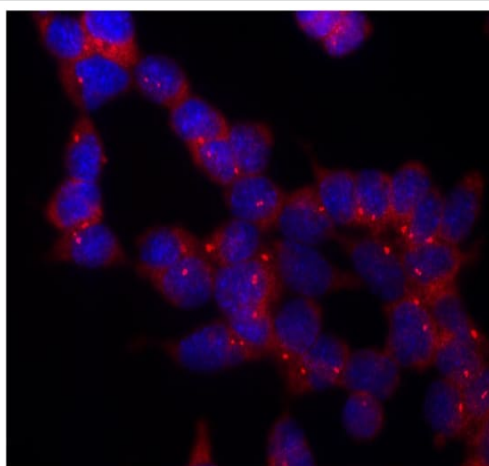
機能	Tubulin is the major constituent of microtubules. Gamma tubulin is found at microtubule organizing centers (MTOC) such as the spindle poles or the centrosome. Pericentriolar matrix component that regulates alpha/beta tubulin minus-end nucleation, centrosome duplication and spindle formation.
配列類似性	Belongs to the tubulin family.
翻訳後修飾	Phosphorylation at Ser-131 by BRSK1 regulates centrosome duplication, possibly by mediating relocation of gamma-tubulin and its associated proteins from the cytoplasm to the centrosome.
細胞内局在	Cytoplasm > cytoskeleton > centrosome.

## 画像



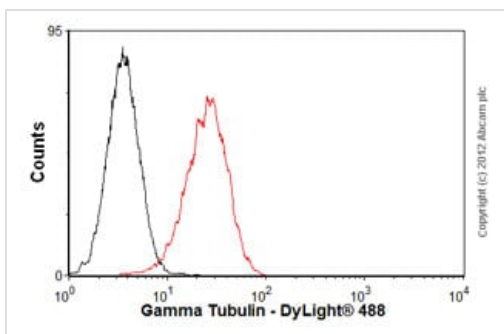
Flow Cytometry (Intracellular) - Anti-gamma Tubulin antibody [TU-30] (ab27074)

Separation of MCF-7 cells stained using ab27074 (concentration in sample 9 µg/ml, GAM APC, red-filled) from MCF-7 cells unstained by primary antibody (GAM APC, black-dashed) in flow cytometry analysis (intracellular staining).



Immunocytochemistry/ Immunofluorescence - Anti-gamma Tubulin antibody [TU-30] (ab27074)

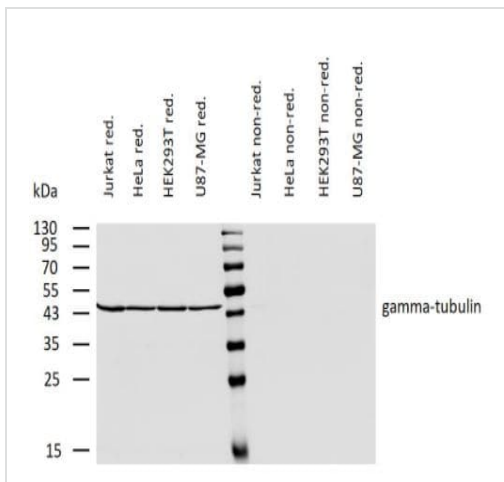
Immunocytochemistry staining of P19X1 mouse embryonal carcinoma cell line using anti-gamma-tubulin (TU-30) (detection by secondary antibody Goat anti-mouse Cy3). Nuclei were stained with DAPI (blue).



Flow Cytometry (Intracellular) - Anti-gamma Tubulin antibody [TU-30] (ab27074)

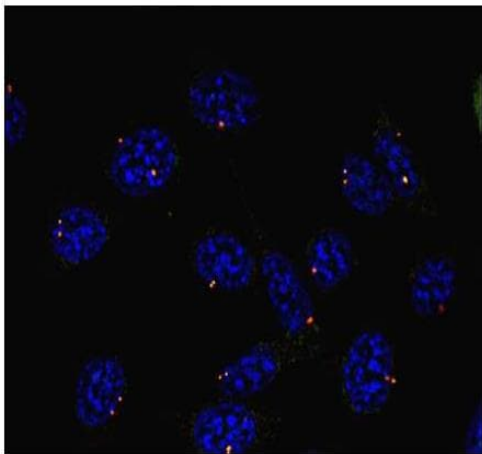
Overlay histogram showing HeLa cells stained with ab27074 (red line). The cells were fixed with 80% methanol (5 min) and then permeabilized with 0.1% PBS-Tween for 20 min. The cells were then incubated in 1x PBS / 10% normal goat serum / 0.3M glycine to block non-specific protein-protein interactions followed by the antibody (ab27074, 1 µg/1x10<sup>6</sup> cells) for 30 min at 22°C. The secondary antibody used was DyLight® 488 goat anti-mouse IgG (H+L) ([ab96879](#)) at 1/500 dilution for 30 min at 22°C. Isotype control antibody (black line) was mouse IgG1 [ICIGG1] ([ab91353](#), 2 µg/1x10<sup>6</sup> cells) used under the same conditions. Acquisition of

>5,000 events was performed.



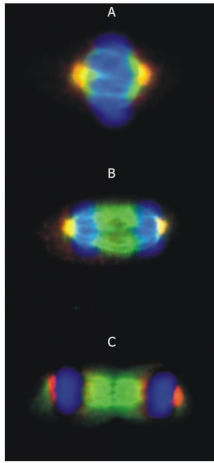
Western blot - Anti-gamma Tubulin antibody [TU-30]  
(ab27074)

Western blotting analysis of gamma-tubulin using ab27074 on lysates of various cell lines under reducing and non-reducing conditions. Nitrocellulose membrane was probed with 2  $\mu$ g/ml of ab27074 followed by IRDye800-conjugated anti-mouse secondary antibody. A specific band was detected for gamma-tubulin at approximately 46 kDa.



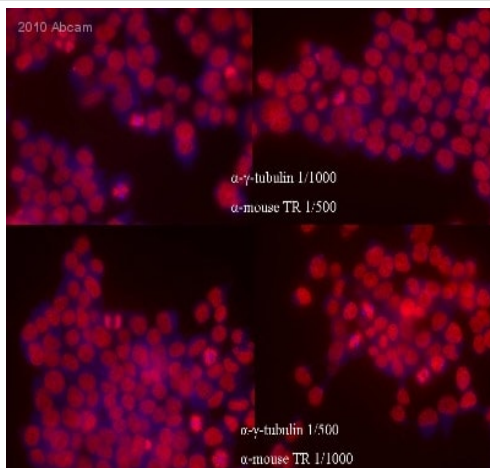
Immunocytochemistry/ Immunofluorescence - Anti-  
gamma Tubulin antibody [TU-30] (ab27074)

Immunocytochemistry analysis of murine fibroblasts labeling gamma Tubulin with ab27074 at 1  $\mu$ g/ml (red). Nuclei were stained with DAPI (blue).



Immunocytochemistry/ Immunofluorescence - Anti-gamma Tubulin antibody [TU-30] (ab27074)

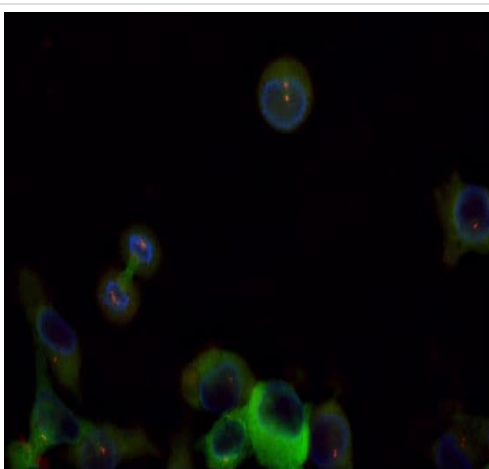
Immunocytochemistry analysis of 3T3 mouse fibroblasts in metaphase (A), anaphase (B) and telophase (C), labeling gamma Tubulin with ab27074 at 1 ug/ml (red). Cells were costained for alpha-tubulin (green). Nuclei were stained with DAPI (blue).



Immunocytochemistry/ Immunofluorescence - Anti-gamma Tubulin antibody [TU-30] (ab27074)

This image is courtesy of an anonymous Abreview

ab27074 staining gamma tubulin in the Human HEK293T cells by ICC. Cells were fixed with paraformaldehyde, permeabilized with methanol (-20°C 20 min) and blocked with 1% BSA for 1 hour at room temperature. Samples were incubated with primary antibody (1/500 or 1/1000 in blocking solution) for 45 minutes. A Texas Red®-conjugated Goat anti-mouse polyclonal (1/500) was used as the secondary antibody.



Immunocytochemistry/ Immunofluorescence - Anti-gamma Tubulin antibody [TU-30] (ab27074)

ab27074 staining gamma tubulin (red) in rat prostate carcinoma cells by ICC. The cells were also transfected with beta-tubulin GFP which stained green.

**Please note:** All products are "FOR RESEARCH USE ONLY. NOT FOR USE IN DIAGNOSTIC PROCEDURES"

### **Our Abpromise to you: Quality guaranteed and expert technical support**

---

- Replacement or refund for products not performing as stated on the datasheet
- Valid for 12 months from date of delivery
- Response to your inquiry within 24 hours
  
- We provide support in Chinese, English, French, German, Japanese and Spanish
- Extensive multi-media technical resources to help you
- We investigate all quality concerns to ensure our products perform to the highest standards

If the product does not perform as described on this datasheet, we will offer a refund or replacement. For full details of the Abpromise, please visit <https://www.abcam.co.jp/abpromise> or contact our technical team.

### **Terms and conditions**

---

- Guarantee only valid for products bought direct from Abcam or one of our authorized distributors