


Anti-gamma Tubulin antibody [EPR16793] - Centrosome Marker ab179503

リコンビナント **RabMAb**

★★★★★ **3 Abreviews** **21 References** 画像数 **12**

製品の概要

製品名	Anti-gamma Tubulin antibody [EPR16793] - Centrosome Marker
製品の詳細	Rabbit monoclonal [EPR16793] to gamma Tubulin - Centrosome Marker
由来種	Rabbit
アプリケーション	適用あり: WB, ICC/IF, IHC-P, Flow Cyt (Intra), IP
種交差性	交差種: Mouse, Rat, Chicken, Hamster, Cow, Dog, Human, Zebrafish, African green monkey, Xenopus tropicalis 交差が予測される動物種: Fish, Monkey 
免疫原	Recombinant fragment. This information is proprietary to Abcam and/or its suppliers.
ポジティブ・コントロール	WB: HeLa, MDCK, MDBK, COS-1, Jurkat, C6, RAW 264.7, PC-12, NIH/3T3, UMNSAH/DF-1 and BHK whole cell lysates; Zebrafish lysates and Xenopus (X. tropicalis) muscle lysates; Human fetal brain, fetal heart, and fetal kidney lysates; Mouse brain and spleen lysates; Rat brain, heart and kidney lysates. IHC-P: Human breast carcinoma, Mouse testis and Rat testis tissues. ICC/IF: HeLa cells. Flow: UMNSAH/DF-1 cells. IP: HeLa whole cell extract.
特記事項	This product is a recombinant monoclonal antibody, which offers several advantages including: <ul style="list-style-type: none"> - High batch-to-batch consistency and reproducibility - Improved sensitivity and specificity - Long-term security of supply - Animal-free production For more information see here . Our RabMAb® technology is a patented hybridoma-based technology for making rabbit monoclonal antibodies. For details on our patents, please refer to RabMAb® patents .

製品の特性

製品の状態	Liquid
保存方法	Shipped at 4°C. Store at +4°C short term (1-2 weeks). Upon delivery aliquot. Store at -20°C long term. Avoid freeze / thaw cycle.
バッファー	Preservative: 0.01% Sodium azide Constituents: 59% PBS, 40% Glycerol, 0.05% BSA

精製度	Protein A purified
ポリ/モノ	モノクローナル
クローン名	EPR16793
アイソタイプ	IgG

アプリケーション

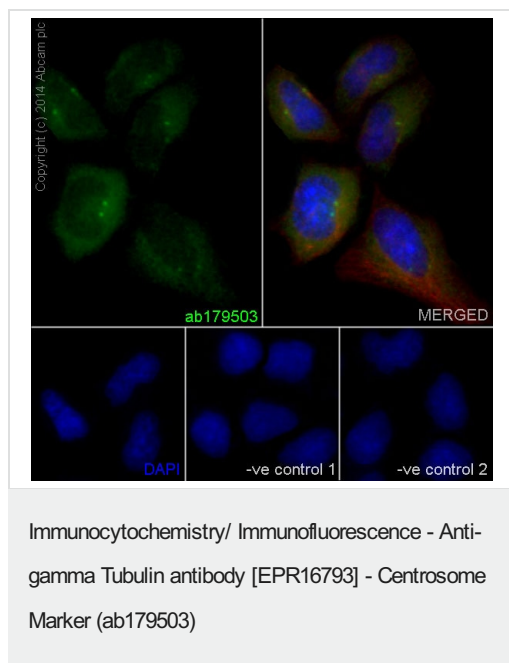
The Abpromise guarantee **Abpromise保証は、次のテスト済みアプリケーションにおけるab179503の使用に適用されます**
 アプリケーションノートには、推奨の開始希釈率がありますが、適切な希釈率につきましてはご検討ください。

アプリケーション	Abreviews	特記事項
WB		1/2000. Detects a band of approximately 48 kDa (predicted molecular weight: 51 kDa).
ICC/IF	★★★★★ (1)	1/500.
IHC-P		1/100 - 1/250. Perform heat mediated antigen retrieval with Tris/EDTA buffer pH 9.0 before commencing with IHC staining protocol.
Flow Cyt (Intra)		1/80. ab172730 - Rabbit monoclonal IgG, is suitable for use as an isotype control with this antibody.
IP		1/30.

ターゲット情報

機能	Tubulin is the major constituent of microtubules. Gamma tubulin is found at microtubule organizing centers (MTOC) such as the spindle poles or the centrosome. Pericentriolar matrix component that regulates alpha/beta tubulin minus-end nucleation, centrosome duplication and spindle formation.
配列類似性	Belongs to the tubulin family.
翻訳後修飾	Phosphorylation at Ser-131 by BRSK1 regulates centrosome duplication, possibly by mediating relocation of gamma-tubulin and its associated proteins from the cytoplasm to the centrosome.
細胞内局在	Cytoplasm > cytoskeleton > centrosome.

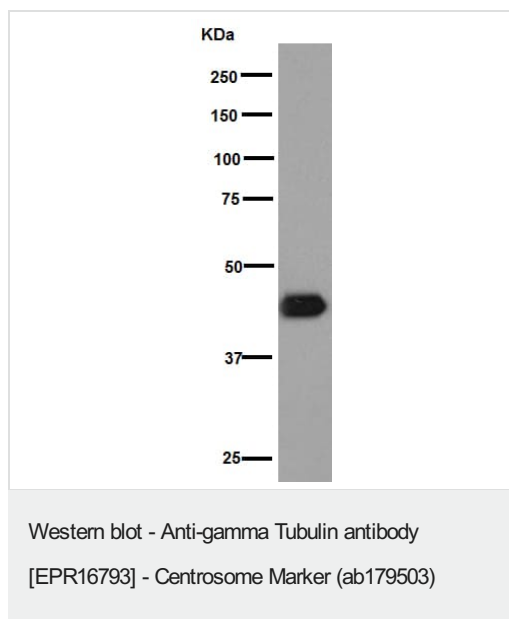
画像



Immunofluorescent analysis of 4% paraformaldehyde-fixed, 0.1% Triton X-100 permeabilized HeLa (Human epithelial cells from cervix adenocarcinoma) cells labeling gamma Tubulin with ab179503 at 1/500 dilution, followed by Goat anti-rabbit IgG (Alexa Fluor® 488) (**ab150077**) secondary antibody at 1/400 dilution (green). Cytoplasmic and centrosome staining on HeLa cell line is observed. The nuclear counter stain is DAPI (blue). Tubulin is detected with **ab7291** (anti-Tubulin mouse mAb) at 1/500 dilution and **ab150120** (AlexaFluor®594 Goat anti-Mouse secondary) at 1/500 dilution (red).

The negative controls are as follows;

1. ab179503 at 1/500 dilution followed by **ab150120** (AlexaFluor®594 Goat anti-Mouse secondary) at 1/500 dilution.
2. **ab7291** (anti-Tubulin mouse mAb) at 1/500 dilution followed by **ab150077** (Alexa Fluor®488 Goat Anti-Rabbit IgG H&L) at 1/400 dilution.



Anti-gamma Tubulin antibody [EPR16793] - Centrosome Marker (ab179503) at 1/20000 dilution + Jurkat (Human T cell leukemia cells from peripheral blood) whole cell lysates at 20 µg

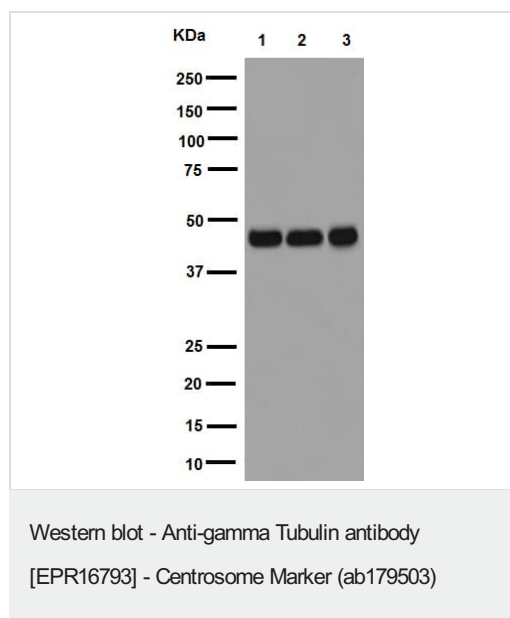
Secondary

Goat Anti-Rabbit IgG, (H+L), Peroxidase conjugated at 1/1000 dilution

Predicted band size: 51 kDa

Observed band size: 48 kDa

Blocking/Dilution buffer: 5% NFDM/TBST.



All lanes : Anti-gamma Tubulin antibody [EPR16793] - Centrosome Marker (ab179503) at 1/2000 dilution

Lane 1 : Human fetal brain lysates

Lane 2 : Human fetal heart lysates

Lane 3 : Human fetal kidney lysates

Lysates/proteins at 10 µg per lane.

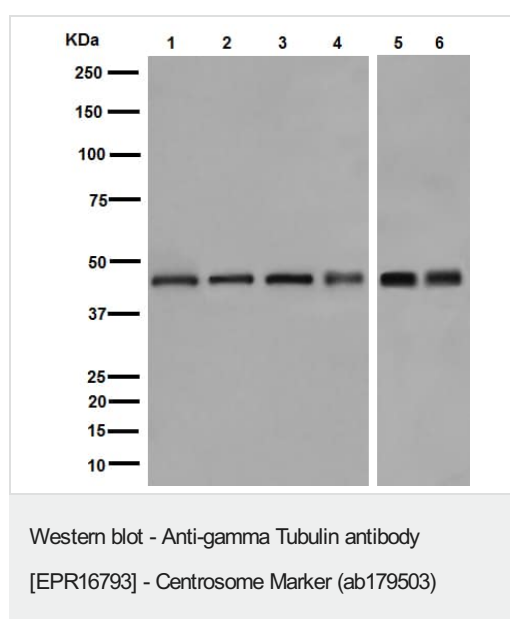
Secondary

All lanes : Anti-Rabbit IgG (HRP), specific to the non-reduced form of IgG at 1/1000 dilution

Predicted band size: 51 kDa

Observed band size: 48 kDa

Blocking/Dilution buffer: 5% NFDM/TBST.



All lanes : Anti-gamma Tubulin antibody [EPR16793] - Centrosome Marker (ab179503) at 1/2000 dilution

Lane 1 : HeLa (Human epithelial cells from cervix adenocarcinoma) whole cell lysates

Lane 2 : MDCK (Canine kidney cell line) whole cell lysates

Lane 3 : MDBK (Bovine kidney cell line) whole cell lysates

Lane 4 : COS-1 (African green monkey kidney fibroblast-like cell line) whole cell lysates

Lane 5 : Zebrafish lysates

Lane 6 : Xenopus (X. tropicalis) muscle lysates

Lysates/proteins at 20 µg per lane.

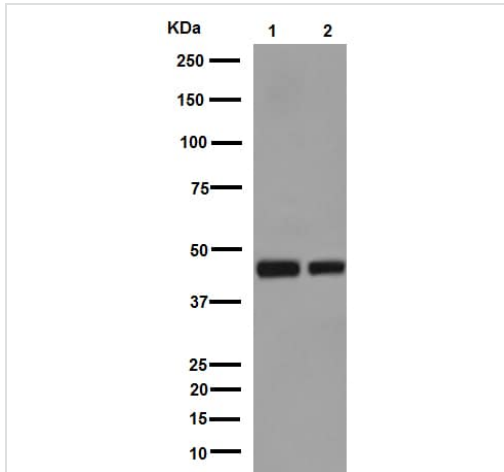
Secondary

All lanes : Goat Anti-Rabbit IgG, (H+L), Peroxidase conjugated at 1/1000 dilution

Predicted band size: 51 kDa

Observed band size: 48 kDa

Blocking/Dilution buffer: 5% NFDM/TBST.



Western blot - Anti-gamma Tubulin antibody [EPR16793] - Centrosome Marker (ab179503)

All lanes : Anti-gamma Tubulin antibody [EPR16793] - Centrosome Marker (ab179503) at 1/20000 dilution

Lane 1 : UMNSAH/DF-1 (Transformed chicken embryonic fibroblast cells) whole cell lysates

Lane 2 : BHK (Hamster kidney fibroblast cells) whole cell lysates

Lysates/proteins at 20 µg per lane.

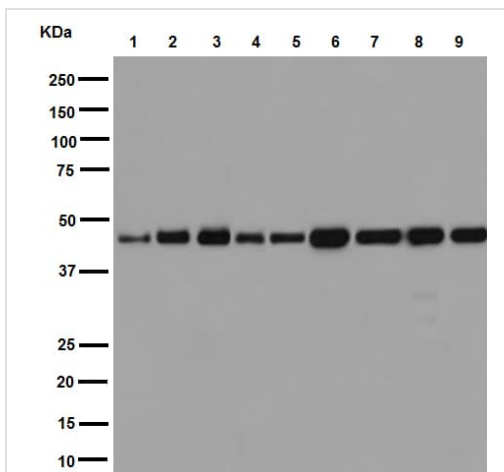
Secondary

All lanes : Goat Anti-Rabbit IgG, (H+L), Peroxidase conjugated at 1/1000 dilution

Predicted band size: 51 kDa

Observed band size: 48 kDa

Blocking/Dilution buffer: 5% NFDM/TBST.



Western blot - Anti-gamma Tubulin antibody [EPR16793] - Centrosome Marker (ab179503)

All lanes : Anti-gamma Tubulin antibody [EPR16793] - Centrosome Marker (ab179503) at 1/2000 dilution

Lane 1 : Mouse brain lysates

Lane 2 : Mouse spleen lysates

Lane 3 : Rat brain lysates

Lane 4 : Rat heart lysates

Lane 5 : Rat kidney lysates

Lane 6 : C6 (Rat glial tumor cells) whole cell lysates

Lane 7 : RAW 264.7 (Mouse macrophage cells transformed with Abelson murine leukemia virus) whole cell lysates

Lane 8 : PC-12 (Rat adrenal gland pheochromocytoma) whole cell lysates

Lane 9 : NIH/3T3 (Mouse embryo fibroblast cells) whole cell lysates

Lysates/proteins at 10 µg per lane.

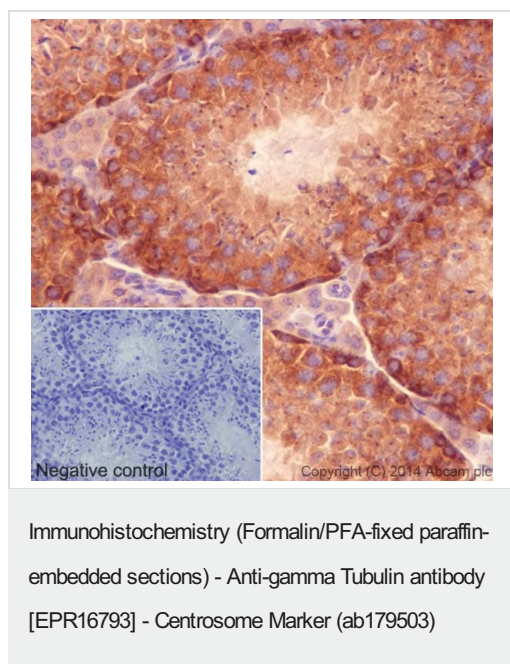
Secondary

All lanes : Goat Anti-Rabbit IgG, (H+L), Peroxidase conjugated at 1/1000 dilution

Predicted band size: 51 kDa

Observed band size: 48 kDa

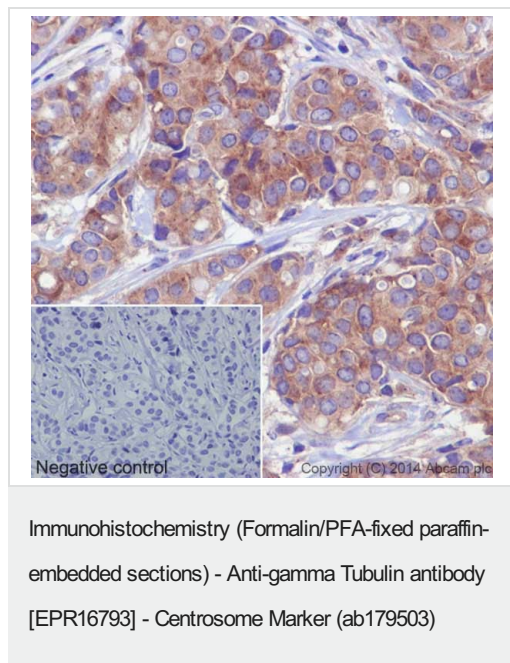
Blocking/Dilution buffer: 5% NFDM/TBST.



Immunohistochemical analysis of paraffin-embedded Mouse testis tissue labeling gamma Tubulin with ab179503 at 1/250 dilution, followed by prediluted HRP Polymer for Rabbit/Mouse IgG. Cytoplasmic staining on epithelial cells of mouse testis is observed. Counter stained with Hematoxylin.

Negative control: Using PBS instead of primary ab, secondary ab is prediluted HRP Polymer for Rabbit/Mouse IgG.

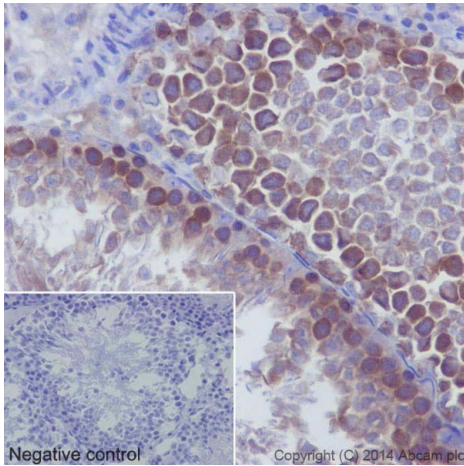
Perform heat mediated antigen retrieval with Tris/EDTA buffer pH 9.0 before commencing with IHC staining protocol.



Immunohistochemical analysis of paraffin-embedded Human breast carcinoma tissue labeling gamma Tubulin with ab179503 at 1/250 dilution, followed by prediluted HRP Polymer for Rabbit/Mouse IgG. Cytoplasmic staining on tumor cells of breast carcinoma is observed. Counter stained with Hematoxylin.

Negative control: Using PBS instead of primary ab, secondary ab is prediluted HRP Polymer for Rabbit/Mouse IgG.

Perform heat mediated antigen retrieval with Tris/EDTA buffer pH 9.0 before commencing with IHC staining protocol.

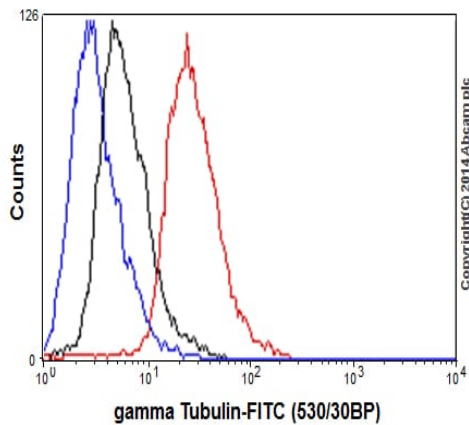


Immunohistochemical analysis of paraffin-embedded Rat testis tissue labeling gamma Tubulin with ab179503 at 1/250 dilution, followed by prediluted HRP Polymer for Rabbit/Mouse IgG. Cytoplasm staining on epithelial cells of rat testis is observed. Counter stained with Hematoxylin.

Negative control: Using PBS instead of primary ab, secondary ab is prediluted HRP Polymer for Rabbit/Mouse IgG.

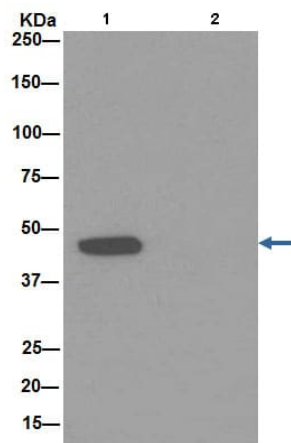
Perform heat mediated antigen retrieval with Tris/EDTA buffer pH 9.0 before commencing with IHC staining protocol.

Immunohistochemistry (Formalin/PFA-fixed paraffin-embedded sections) - Anti-gamma Tubulin antibody [EPR16793] - Centrosome Marker (ab179503)



Intracellular flow cytometric analysis of 2% paraformaldehyde-fixed UMNSAH/DF-1 (Transformed chicken embryonic fibroblast cells) cells labeling gamma Tubulin with ab179503 at 1/80 dilution (red) compared with a rabbit monoclonal IgG isotype control (black) and an unlabelled control (cells without incubation with primary antibody and secondary antibody; blue). Goat anti rabbit IgG (FITC) at 1/150 dilution was used as the secondary antibody.

Flow Cytometry (Intracellular) - Anti-gamma Tubulin antibody [EPR16793] - Centrosome Marker (ab179503)

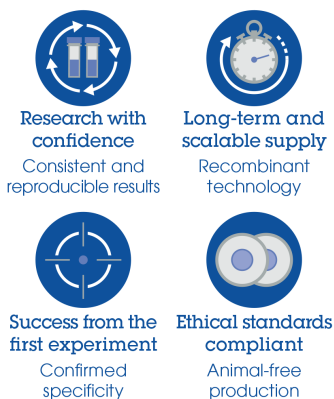


Immunoprecipitation - Anti-gamma Tubulin antibody
[EPR16793] - Centrosome Marker (ab179503)

Gamma Tubulin was immunoprecipitated from 1mg of HeLa (Human epithelial cells from cervix adenocarcinoma) whole cell extract with ab179503 at 1/30 dilution. Western blot was performed from the immunoprecipitate using ab179503 at 1/1000 dilution. Anti-Rabbit IgG (HRP), specific to the non-reduced form of IgG was used as secondary antibody at 1/1500 dilution. Lane 1: HeLa whole cell extract. Lane 2: PBS instead of HeLa whole cell extract.

Blocking and dilution buffer and concentration: 5% NFDm/TBST.

Why choose a recombinant antibody?



Anti-gamma Tubulin antibody [EPR16793] -
Centrosome Marker (ab179503)

Please note: All products are "FOR RESEARCH USE ONLY. NOT FOR USE IN DIAGNOSTIC PROCEDURES"

Our Abpromise to you: Quality guaranteed and expert technical support

- Replacement or refund for products not performing as stated on the datasheet
- Valid for 12 months from date of delivery
- Response to your inquiry within 24 hours
- We provide support in Chinese, English, French, German, Japanese and Spanish
- Extensive multi-media technical resources to help you
- We investigate all quality concerns to ensure our products perform to the highest standards

If the product does not perform as described on this datasheet, we will offer a refund or replacement. For full details of the Abpromise, please visit <https://www.abcam.co.jp/abpromise> or contact our technical team.

Terms and conditions

- Guarantee only valid for products bought direct from Abcam or one of our authorized distributors