


Anti-gamma Tubulin antibody - Centrosome Marker ab16504

★★★★★ **9 Abreviews** **25 References** 画像数 6

製品の概要

製品名	Anti-gamma Tubulin antibody - Centrosome Marker
製品の詳細	Rabbit polyclonal to gamma Tubulin - Centrosome Marker
由来種	Rabbit
特異性	Does not react with alpha or beta tubulin. Immunogen sequence found in both gamma tubulin 1 and gamma tubulin 2.
アプリケーション	適用あり: ICC/IF, WB
種交差性	交差種: Human, Zebrafish 交差が予測される動物種: Mouse, Rat, Dog, Xenopus laevis 
免疫原	Synthetic peptide corresponding to Human gamma Tubulin aa 1-100 (internal sequence) conjugated to keyhole limpet haemocyanin. (Peptide available as ab17097)
特記事項	<p>The Life Science industry has been in the grips of a reproducibility crisis for a number of years. Abcam is leading the way in addressing this with our range of recombinant monoclonal antibodies and knockout edited cell lines for gold-standard validation. Please check that this product meets your needs before purchasing.</p> <p>If you have any questions, special requirements or concerns, please send us an inquiry and/or contact our Support team ahead of purchase. Recommended alternatives for this product can be found below, along with publications, customer reviews and Q&As</p>

製品の特性

製品の状態	Liquid
保存方法	Shipped at 4°C. Store at +4°C short term (1-2 weeks). Upon delivery aliquot. Store at -20°C or -80°C. Avoid freeze / thaw cycle.
バッファー	pH: 7.40 Preservative: 0.02% Sodium azide Constituent: PBS
	Batches of this product that have a concentration < 1mg/ml may have BSA added as a stabilising agent. If you would like information about the formulation of a specific lot, please contact our scientific support team who will be happy to help.

精製度	Immunogen affinity purified
ポリ/モノ	ポリクローナル
アイソタイプ	IgG

アプリケーション

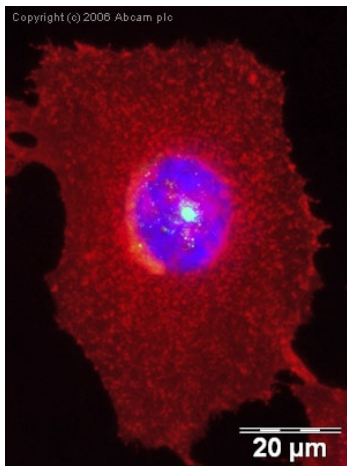
The Abpromise guarantee **Abpromise保証は、次のテスト済みアプリケーションにおけるab16504の使用に適用されます**
 アプリケーションノートには、推奨の開始希釈率がありますが、適切な希釈率につきましてはご検討ください。

アプリケーション	Abreviews	特記事項
ICC/IF	★★★★★ (4)	Use a concentration of 5 µg/ml.
WB	★★★★★ (2)	Use a concentration of 1 µg/ml. Detects a band of approximately 48 kDa (predicted molecular weight: 48 kDa). Abcam recommends using milk as the blocking agent.

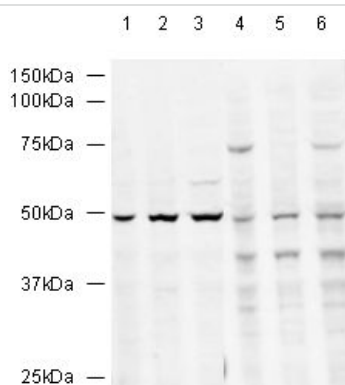
ターゲット情報

機能	Tubulin is the major constituent of microtubules. Gamma tubulin is found at microtubule organizing centers (MTOC) such as the spindle poles or the centrosome. Pericentriolar matrix component that regulates alpha/beta tubulin minus-end nucleation, centrosome duplication and spindle formation.
配列類似性	Belongs to the tubulin family.
翻訳後修飾	Phosphorylation at Ser-131 by BRSK1 regulates centrosome duplication, possibly by mediating relocation of gamma-tubulin and its associated proteins from the cytoplasm to the centrosome.
細胞内局在	Cytoplasm > cytoskeleton > centrosome.

画像



Immunocytochemistry/ Immunofluorescence - Anti-gamma Tubulin antibody - Centrosome Marker (ab16504)



Western blot - Anti-gamma Tubulin antibody - Centrosome Marker (ab16504)

ICC/IF image of ab16504 stained human HeLa cells. The cells were methanol fixed (5 min) and incubated with the antibody (ab16504, 5μg/ml) for 1h at room temperature. The secondary antibody (green) was Alexa Fluor® 488 goat anti-rabbit IgG (H+L) used at a 1/1000 dilution for 1h. Image-iT™ FX Signal Enhancer was used as the primary blocking agent, 5% BSA (in TBS-T) was used for all other blocking steps. DAPI was used to stain the cell nuclei (blue). Alexa Fluor® 594 WGA was used to label plasma membranes (red).

All lanes : Anti-gamma Tubulin antibody - Centrosome Marker (ab16504) at 1 μg/ml

Lane 1 : HeLa Whole Cell Lysate

Lane 2 : HeLa Nuclear Cell Lysate

Lane 3 : A431 Whole Cell Lysate

Lane 4 : HeLa Whole Cell Lysate with Human gamma Tubulin peptide ([ab17097](#)) at 1 μg/ml

Lane 5 : HeLa Nuclear Cell Lysate with Human gamma Tubulin peptide ([ab17097](#)) at 1 μg/ml

Lane 6 : A431 Whole Cell Lysate with Human gamma Tubulin peptide ([ab17097](#)) at 1 μg/ml

Lysates/proteins at 20 μg per lane.

Secondary

All lanes : Alexa Fluor Goat polyclonal to Rabbit IgG at 1/10000 dilution

Performed under reducing conditions.

Predicted band size: 48 kDa

Lane 1 - 6 : gamma Tubulin antibody - Centrosome Marker ([ab11317](#)) at 1 ug/ml

Lane 1 : HeLa Whole Cell Lysate

Lane 2 : HeLa Nuclear Cell Lysate

Lane 3 : A431 Whole Cell Lysate

Lane 4 : HeLa Whole Cell Lysate with gamma Tubulin peptide (38-53) ([ab17097](#))

Lane 5 : HeLa Nuclear Cell Lysate with gamma Tubulin peptide (38-53) ([ab17097](#))

Lane 6 : A431 Whole Cell Lysate with gamma Tubulin peptide (38-53) ([ab17097](#))

Secondary

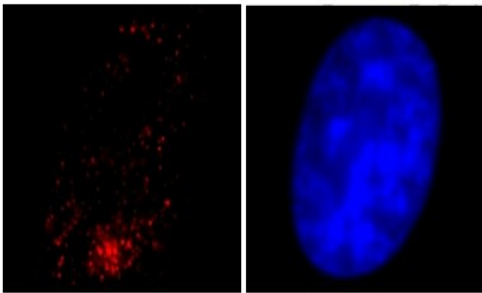
Alexa Fluor Goat polyclonal to Rabbit IgG at 1/10000 dilution

Lysates at 20 ug.

Blocking peptide at 1 ug/ml.

Performed under reducing conditions.

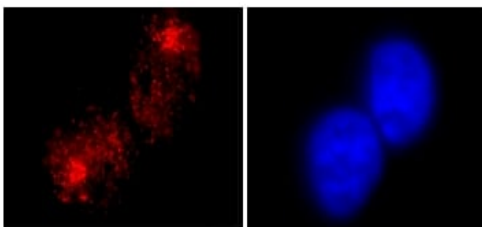
Observed band size : 48kD



Immunocytochemistry/ Immunofluorescence - Anti-gamma Tubulin antibody - Centrosome Marker (ab16504)

This image is courtesy of Darin McDonald, Cross Cancer Institute

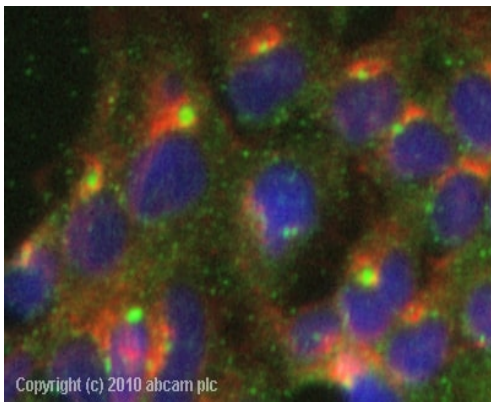
SK-N-SH cells were fixed in 4% paraformaldehyde, permeabilized in 0.5% Triton X-100 and incubated for 1 hour with ab16504 (1/300). ab16504 staining is localized to the centrosome (red). The cells were counterstained with DAPI (blue). 100x magnification. The cells were blocked with 5% fetal bovine serum.



Immunocytochemistry/ Immunofluorescence - Anti-gamma Tubulin antibody - Centrosome Marker (ab16504)

This image is courtesy of Darin McDonald, Cross Cancer Institute

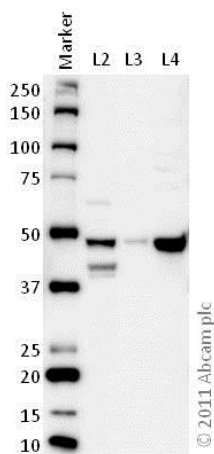
SK-N-SH cells were fixed in 4% paraformaldehyde, permeabilized in 0.5% Triton X-100 and incubated for 1 hour with ab16504. The antibody clearly labels the centrosome (red). The cells were counterstained with DAPI (blue). The cells were blocked in 5% BSA.



Immunocytochemistry/ Immunofluorescence - Anti-gamma Tubulin antibody - Centrosome Marker (ab16504)

ICC/IF image of ab16504 stained Hek293 cells. The cells were 100% methanol fixed (5 min) and then incubated in 1%BSA / 10% normal goat serum / 0.3M glycine in 0.1% PBS-Tween for 1h to permeabilise the cells and block non-specific protein-protein interactions. The cells were then incubated with the antibody (ab16504, 1µg/ml) overnight at +4°C. The secondary antibody (green) was Alexa Fluor® 488 goat anti-rabbit IgG (H+L) used at a 1/1000 dilution for 1h. Alexa Fluor® 594 WGA was used to label plasma membranes (red) at a 1/200 dilution for 1h. DAPI was used to stain the cell nuclei (blue) at a concentration of 1.43µM.

The cause of the background staining is uncertain, although a cytokeratin exists of a similar molecular weight and amino acid sequence to that of the immunogen used to raise the antibody.



Western blot - Anti-gamma Tubulin antibody - Centrosome Marker (ab16504)

All lanes : Anti-gamma Tubulin antibody - Centrosome Marker (ab16504) at 1 µg/ml

Lane 1 : Molecular Marker

Lane 2 : Zebrafish brain homogenate at 20 µg

Lane 3 : Zebrafish liver homogenate at 20 µg

Lane 4 : HeLa (Human epithelial carcinoma cell line) whole cell lysate at 20 µg

Secondary

Lane 1 : Goat polyclonal to Rabbit IgG – H&L – Pre-Adsorbed (HRP) at 1/6000 dilution

Lanes 2-4 : Goat polyclonal to Rabbit IgG – H&L – Pre-Adsorbed (HRP) at 1/6000 dilution

Developed using the ECL technique.

Performed under reducing conditions.

Predicted band size: 48 kDa

Observed band size: 48 kDa

Exposure time: 5 minutes

Please note: All products are "FOR RESEARCH USE ONLY. NOT FOR USE IN DIAGNOSTIC PROCEDURES"

Our Abpromise to you: Quality guaranteed and expert technical support

- Replacement or refund for products not performing as stated on the datasheet
- Valid for 12 months from date of delivery
- Response to your inquiry within 24 hours

- We provide support in Chinese, English, French, German, Japanese and Spanish
- Extensive multi-media technical resources to help you
- We investigate all quality concerns to ensure our products perform to the highest standards

If the product does not perform as described on this datasheet, we will offer a refund or replacement. For full details of the Abpromise, please visit <https://www.abcam.co.jp/abpromise> or contact our technical team.

Terms and conditions

- Guarantee only valid for products bought direct from Abcam or one of our authorized distributors