



# Anti-gamma Tubulin antibody ab11317

★★★★★ **16 Abreviews**   **100 References**   画像数 4

### 製品の概要

製品名	Anti-gamma Tubulin antibody
製品の詳細	Rabbit polyclonal to gamma Tubulin
由来種	Rabbit
アプリケーション	<b>適用あり:</b> ICC/IF, WB
種交差性	<b>交差種:</b> Mouse, Rat, Human, Chinese hamster <b>交差が予測される動物種:</b> Drosophila melanogaster, Schizosaccharomyces pombe, Sea urchin 
免疫原	Synthetic peptide: EEFATEGTDRKDVFFY-C conjugated to KLH, corresponding to N terminal amino acids 38-53 of Human gamma Tubulin  <a href="#">Run BLAST with</a>  <a href="#">Run BLAST with</a>
ポジティブ・コントロール	ICC/IF: Rat2 cells; NIH3T3 cells; HeLa cells. WB: Rat2 cell lysate; A431 cell lysate; HeLa cell lysate; Jurkat cell lysate; U87 cell lysate; C2C12 cell lysate; CHO cell lysate; NIH3T3 cell lysate.
特記事項	<p>The Life Science industry has been in the grips of a reproducibility crisis for a number of years. Abcam is leading the way in addressing this with our range of recombinant monoclonal antibodies and knockout edited cell lines for gold-standard validation. Please check that this product meets your needs before purchasing.</p> <p>If you have any questions, special requirements or concerns, please send us an inquiry and/or contact our Support team ahead of purchase. Recommended alternatives for this product can be found below, along with publications, customer reviews and Q&amp;As</p>

### 製品の特性

製品の状態	Liquid
保存方法	Shipped at 4°C. Upon delivery aliquot and store at -20°C or -80°C. Avoid repeated freeze / thaw cycles.
バッファー	pH: 7.40 Preservative: 0.097% Sodium azide Constituents: 0.0268% PBS, 0.42% Potassium phosphate, 0.87% Sodium chloride
精製度	IgG fraction
ポリ/モノ	ポリクローナル

## アプリケーション

## The Abpromise guarantee

**Abpromise保証は、次のテスト済みアプリケーションにおけるab11317の使用に適用されます**

アプリケーションノートには、推奨の開始希釈率がありますが、適切な希釈率につきましてはご検討ください。

アプリケーション	Abreviews	特記事項
ICC/IF	★★★★★ (5)	1/5000. It is recommended to fix cells with methanol/acetone.
WB	★★★★★ (7)	1/1000. Detects a band of approximately 48 kDa. This concentration was determined for A431 cultured cells extract. Block with 5% BSA in TBST (not milk). Detects a band of approximately 48 kDa. Additional bands can occasionally be seen.

## ターゲット情報

## 機能

Tubulin is the major constituent of microtubules. Gamma tubulin is found at microtubule organizing centers (MTOC) such as the spindle poles or the centrosome. Pericentriolar matrix component that regulates alpha/beta tubulin minus-end nucleation, centrosome duplication and spindle formation.

## 配列類似性

Belongs to the tubulin family.

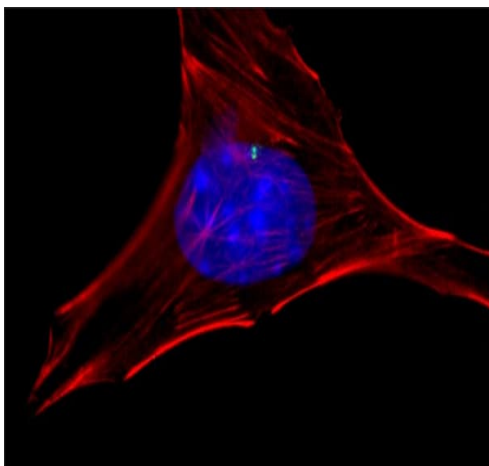
## 翻訳後修飾

Phosphorylation at Ser-131 by BRSK1 regulates centrosome duplication, possibly by mediating relocation of gamma-tubulin and its associated proteins from the cytoplasm to the centrosome.

## 細胞内局在

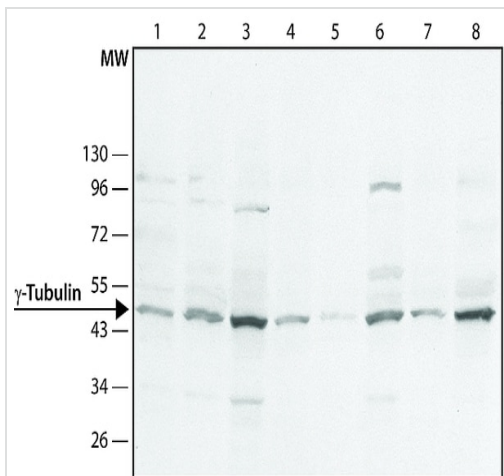
Cytoplasm > cytoskeleton > centrosome.

## 画像



Immunocytochemistry/Immunofluorescence analysis of NIH3T3 cells labelling gamma Tubulin (green) with ab11317 at a dilution of 1/1500. A Atto448 dye conjugated goat anti-rabbit IgG was used as the secondary antibody. Actin was stained with phalloidin rhodamine conjugate (red). Nuclear staining with DAPI (blue).

Immunocytochemistry/ Immunofluorescence - Anti-gamma Tubulin antibody (ab11317)



Western blot - Anti-gamma Tubulin antibody  
(ab11317)

**All lanes :** Anti-gamma Tubulin antibody (ab11317) at 1/1000 dilution

**Lane 1 :** A431 cell lysate

**Lane 2 :** HeLa cell lysate

**Lane 3 :** Jurkat cell lysate

**Lane 4 :** C2C12 cell lysate

**Lane 5 :** Rat2 cell lysate

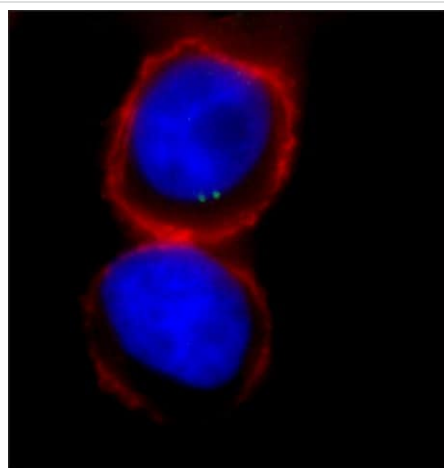
**Lane 6 :** U87 cell lysate

**Lane 7 :** NIH3T3 cell lysate

**Lane 8 :** CHO cell lysate

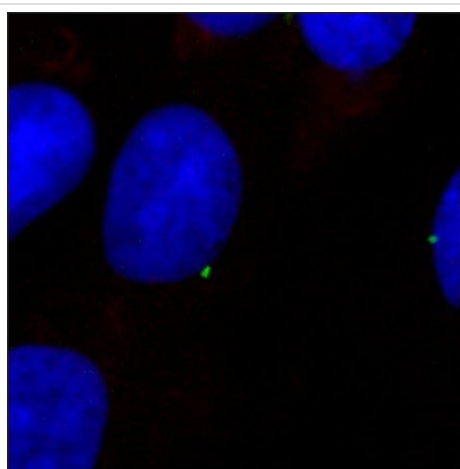
### Secondary

**All lanes :** Peroxidase-conjugated goat anti-rabbit IgG



Immunocytochemistry/ Immunofluorescence - Anti-gamma Tubulin antibody (ab11317)

Immunocytochemistry/Immunofluorescence analysis of HeLa cells labelling gamma Tubulin (green) with ab11317 at a dilution of 1/1500. A Atto448 dye conjugated goat anti-rabbit IgG was used as the secondary antibody. Actin was stained with phalloidin rhodamine conjugate (red). Nuclear staining with DAPI (blue).



Immunocytochemistry/ Immunofluorescence - Anti-gamma Tubulin antibody (ab11317)

Immunocytochemistry/Immunofluorescence analysis of Rat2 cells labelling gamma Tubulin (green) with ab11317 at a dilution of 1/1500. A Atto448 dye conjugated goat anti-rabbit IgG was used as the secondary antibody. Actin was stained with phalloidin rhodamine conjugate (red). Nuclear staining with DAPI (blue).

**Please note:** All products are "FOR RESEARCH USE ONLY. NOT FOR USE IN DIAGNOSTIC PROCEDURES"

### **Our Abpromise to you: Quality guaranteed and expert technical support**

---

- Replacement or refund for products not performing as stated on the datasheet
- Valid for 12 months from date of delivery
- Response to your inquiry within 24 hours
  
- We provide support in Chinese, English, French, German, Japanese and Spanish
- Extensive multi-media technical resources to help you
- We investigate all quality concerns to ensure our products perform to the highest standards

If the product does not perform as described on this datasheet, we will offer a refund or replacement. For full details of the Abpromise, please visit <https://www.abcam.co.jp/abpromise> or contact our technical team.

### **Terms and conditions**

---

- Guarantee only valid for products bought direct from Abcam or one of our authorized distributors