

Anti-gamma Synuclein/SNCG antibody [EP1539Y] ab52633

KO 評価済 リコンビナント RabMAb

4 References 画像数 4

製品の概要

製品名	Anti-gamma Synuclein/SNCG antibody [EP1539Y]
製品の詳細	Rabbit monoclonal [EP1539Y] to gamma Synuclein/SNCG
由来種	Rabbit
アプリケーション	適用あり: WB, IHC-P 適用なし: Flow Cyt or ICC/IF
種交差性	交差種: Human 非交差種: Mouse, Rat
免疫原	Synthetic peptide within gamma Synuclein/SNCG aa 100-200. The exact sequence is proprietary.
ポジティブ・コントロール	WB: HeLa and SK-BR-3 cell lysates; Human fetal brain lysate. IHC-P: Human brain.
特記事項	<p>This product is a recombinant monoclonal antibody, which offers several advantages including:</p> <ul style="list-style-type: none"> - High batch-to-batch consistency and reproducibility - Improved sensitivity and specificity - Long-term security of supply - Animal-free production <p>For more information see here.</p> <p>Our RabMAb[®] technology is a patented hybridoma-based technology for making rabbit monoclonal antibodies. For details on our patents, please refer to RabMAb[®] patents.</p> <p>Mouse: We have preliminary internal testing data to indicate this antibody may not react with this species. Please contact us for more information.</p>

製品の特性

製品の状態	Liquid
保存方法	Shipped at 4°C. Store at +4°C short term (1-2 weeks). Upon delivery aliquot. Store at -20°C. Stable for 12 months at -20°C.
バッファー	pH: 7.20 Preservative: 0.01% Sodium azide Constituents: 9% PBS, 40% Glycerol (glycerin, glycerine), 0.05% BSA, 50% Tissue culture supernatant
精製度	Protein A purified

ポリ/モノ	モノクローナル
クローン名	EP1539Y
アイソタイプ	IgG

アプリケーション

The Abpromise guarantee Abpromise保証は、 次のテスト済みアプリケーションにおけるab52633の使用に適用されます
アプリケーションノートには、推奨の開始希釈率がありますが、適切な希釈率につきましてはご検討ください。

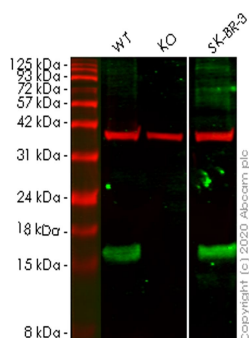
アプリケーション	Abreviews	特記事項
WB		1/1000 - 1/5000. Detects a band of approximately 16 kDa (predicted molecular weight: 13 kDa).
IHC-P		Use at an assay dependent concentration. Perform heat mediated antigen retrieval with citrate buffer pH 6 before commencing with IHC staining protocol.

追加情報 Is unsuitable for Flow Cyt or ICC/IF.

ターゲット情報

機能	Plays a role in neurofilament network integrity. May be involved in modulating axonal architecture during development and in the adult. In vitro, increases the susceptibility of neurofilament-H to calcium-dependent proteases (By similarity). May also function in modulating the keratin network in skin. Activates the MAPK and Elk-1 signal transduction pathway.
組織特異性	Highly expressed in brain, particularly in the substantia nigra. Also expressed in the corpus callosum, heart, skeletal muscle, ovary, testis, colon and spleen. Weak expression in pancreas, kidney and lung.
配列類似性	Belongs to the synuclein family.
翻訳後修飾	Phosphorylated. Phosphorylation by GRK5 appears to occur on residues distinct from the residue phosphorylated by other kinases.
細胞内局在	Cytoplasm > perinuclear region. Cytoplasm > cytoskeleton > centrosome. Cytoplasm > cytoskeleton > spindle. Associated with centrosomes in several interphase cells. In mitotic cells, localized to the poles of the spindle.

画像



Western blot - Anti-gamma Synuclein/SNCG antibody [EP1539Y] (ab52633)

All lanes : Anti-gamma Synuclein/SNCG antibody [EP1539Y] (ab52633) at 1/1000 dilution

Lane 1 : Wild-type HeLa cell lysate

Lane 2 : SNCG knockout HeLa cell lysate

Lane 3 : SK-BR-3 cell lysate

Lysates/proteins at 20 µg per lane.

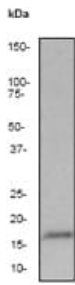
Secondary

All lanes : Goat anti-Rabbit IgG H&L (IRDye® 800CW) preadsorbed ([ab216773](#)) at 1/10000 dilution

Predicted band size: 13 kDa

Lanes 1-3: Merged signal (red and green). Green - ab52633 observed at 16 kDa. Red - loading control [ab8245](#) observed at 36 kDa.

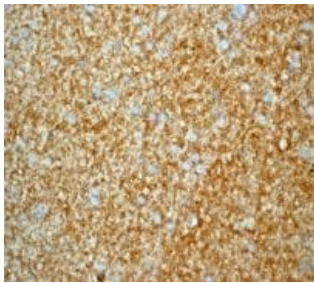
ab52633 Anti-gamma Synuclein/SNCG antibody [EP1539Y] was shown to specifically react with gamma Synuclein/SNCG antibody in wild-type HeLa cells. Loss of signal was observed when knockout cell line [ab265623](#) (knockout cell lysate [ab257694](#)) was used. Wild-type and gamma Synuclein/SNCG knockout samples were subjected to SDS-PAGE. ab52633 and Anti-GAPDH antibody [6C5] - Loading Control ([ab8245](#)) were incubated overnight at 4°C at 1 in 1000 dilution and 1 in 20000 dilution respectively. Blots were developed with Goat anti-Rabbit IgG H&L (IRDye® 800CW) preadsorbed ([ab216773](#)) and Goat anti-Mouse IgG H&L (IRDye® 680RD) preadsorbed ([ab216776](#)) secondary antibodies at 1 in 20000 dilution for 1 hour at room temperature before imaging.



Western blot - Anti-gamma Synuclein/SNCG antibody [EP1539Y] (ab52633)

Anti-gamma Synuclein/SNCG antibody [EP1539Y] (ab52633) at 1/2000 dilution + Human fetal brain lysate

Predicted band size: 13 kDa



Immunohistochemistry (Formalin/PFA-fixed paraffin-embedded sections) - Anti-gamma Synuclein/SNCG antibody [EP1539Y] (ab52633)

ab52633 staining human brain in IHC-P.

Perform heat mediated antigen retrieval with citrate buffer pH 6 before commencing with IHC staining protocol.

Why choose a recombinant antibody?



Research with confidence
Consistent and reproducible results



Long-term and scalable supply
Recombinant technology



Success from the first experiment
Confirmed specificity



Ethical standards compliant
Animal-free production

Anti-gamma Synuclein/SNCG antibody [EP1539Y] (ab52633)

Please note: All products are "FOR RESEARCH USE ONLY. NOT FOR USE IN DIAGNOSTIC PROCEDURES"

Our Abpromise to you: Quality guaranteed and expert technical support

- Replacement or refund for products not performing as stated on the datasheet
- Valid for 12 months from date of delivery
- Response to your inquiry within 24 hours

- We provide support in Chinese, English, French, German, Japanese and Spanish
- Extensive multi-media technical resources to help you
- We investigate all quality concerns to ensure our products perform to the highest standards

If the product does not perform as described on this datasheet, we will offer a refund or replacement. For full details of the Abpromise, please visit <https://www.abcam.co.jp/abpromise> or contact our technical team.

Terms and conditions

- Guarantee only valid for products bought direct from Abcam or one of our authorized distributors