





# Anti-GALNTL6 antibody ab122149

画像数 2

### 製品の概要

製品名	Anti-GALNTL6 antibody
製品の詳細	Rabbit polyclonal to GALNTL6
由来種	Rabbit
アプリケーション	<b>適用あり:</b> WB, IHC-P
種交差性	<b>交差種:</b> Human
免疫原	antigen sequence corresponding to amino acids 33-114 (DKHLVKS AEP GEQQTFPLGL GDGQFYSWTD GLRRKDWHDY ESIQKEAMRS GKGEHGKPYP LTEEDHDDSA YRENGFNIFV SN) of Human GALNTL6. <div>  <b>Run BLAST with</b>   <b>Run BLAST with</b>  </div>
ポジティブ・コントロール	Human Placenta tissue; RT-4 and U-251 MG cell lysate.
特記事項	<p>The Life Science industry has been in the grips of a reproducibility crisis for a number of years. Abcam is leading the way in addressing this with our range of recombinant monoclonal antibodies and knockout edited cell lines for gold-standard validation. Please check that this product meets your needs before purchasing.</p> <p>If you have any questions, special requirements or concerns, please send us an inquiry and/or contact our Support team ahead of purchase. Recommended alternatives for this product can be found below, along with publications, customer reviews and Q&amp;As</p>

### 製品の特性

製品の状態	Liquid
保存方法	Shipped at 4°C. Upon delivery aliquot and store at -20°C. Avoid freeze / thaw cycles.
バッファー	pH: 7.20 Preservative: 0.02% Sodium azide Constituents: 59% PBS, 40% Glycerol (glycerin, glycerine)
精製度	Immunogen affinity purified
ポリ/モノ	ポリクローナル
アイソタイプ	IgG

### アプリケーション

## The Abpromise guarantee

**Abpromise保証は、次のテスト済みアプリケーションにおけるab122149の使用に適用されます**

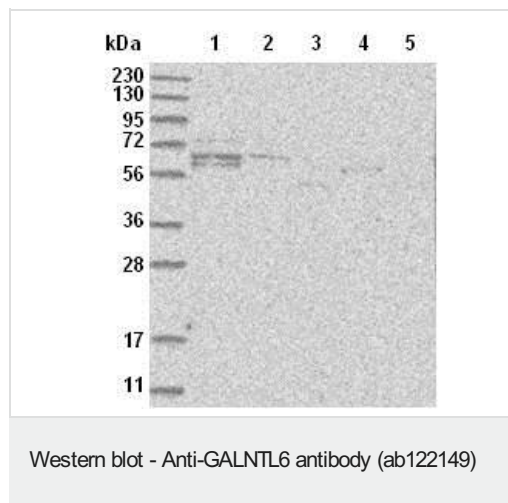
アプリケーションノートには、推奨の開始希釈率がありますが、適切な希釈率につきましてはご検討ください。

アプリケーション	Abreviews	特記事項
WB		Use a concentration of 0.04 - 0.4 µg/ml.
IHC-P		1/50 - 1/200. Perform heat mediated antigen retrieval with citrate buffer pH 6 before commencing with IHC staining protocol.

## ターゲット情報

機能	Catalyzes the initial reaction in O-linked oligosaccharide biosynthesis, the transfer of an N-acetyl-D-galactosamine residue to a serine or threonine residue on the protein receptor.
パスウェイ	Protein modification; protein glycosylation.
配列類似性	Belongs to the glycosyltransferase 2 family. GalNAc-T subfamily. Contains 1 ricin B-type lectin domain.
ドメイン	There are two conserved domains in the glycosyltransferase region: the N-terminal domain (domain A, also called GT1 motif), which is probably involved in manganese coordination and substrate binding and the C-terminal domain (domain B, also called Gal/GalNAc-T motif), which is probably involved in catalytic reaction and UDP-Gal binding. The ricin B-type lectin domain binds to GalNAc and contributes to the glycopeptide specificity.
細胞内局在	Golgi apparatus membrane.

## 画像



**All lanes :** Anti-GALNTL6 antibody (ab122149) at 1/250 dilution

**Lane 1 :** RT-4 cell lysate

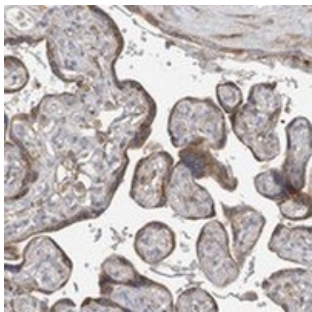
**Lane 2 :** U-251 MG cell lysate

**Lane 3 :** Human Plasma

**Lane 4 :** Human Liver lysate

**Lane 5 :** Human Tonsil lysate

Developed using the ECL technique.



ab122149, at 1/135, staining GALNTL6 in paraffin-embedded Human placenta tissue by Immunohistochemistry.

Immunohistochemistry (Formalin/PFA-fixed paraffin-embedded sections) - Anti-GALNTL6 antibody (ab122149)

**Please note:** All products are "FOR RESEARCH USE ONLY. NOT FOR USE IN DIAGNOSTIC PROCEDURES"

#### **Our Abpromise to you: Quality guaranteed and expert technical support**

---

- Replacement or refund for products not performing as stated on the datasheet
- Valid for 12 months from date of delivery
- Response to your inquiry within 24 hours
- We provide support in Chinese, English, French, German, Japanese and Spanish
- Extensive multi-media technical resources to help you
- We investigate all quality concerns to ensure our products perform to the highest standards

If the product does not perform as described on this datasheet, we will offer a refund or replacement. For full details of the Abpromise, please visit <https://www.abcam.co.jp/abpromise> or contact our technical team.

#### **Terms and conditions**

---

- Guarantee only valid for products bought direct from Abcam or one of our authorized distributors