

Anti-Galectin 3 antibody ab53082

★★★★☆ [3 Abreviews](#) [34 References](#) [画像数 2](#)

製品の概要

| | |
|----------|---|
| 製品名 | Anti-Galectin 3 antibody |
| 製品の詳細 | Rabbit polyclonal to Galectin 3 |
| 由来種 | Rabbit |
| アプリケーション | 適用あり: WB, IHC-P |
| 種交差性 | 交差種: Human |
| 免疫原 | Synthetic peptide corresponding to Human Galectin 3 (internal sequence). The immunogen is in the range of aa 141-190. Database link: P17931 |
| 特記事項 | <p>The Life Science industry has been in the grips of a reproducibility crisis for a number of years. Abcam is leading the way in addressing this with our range of recombinant monoclonal antibodies and knockout edited cell lines for gold-standard validation. Please check that this product meets your needs before purchasing.</p> <p>If you have any questions, special requirements or concerns, please send us an inquiry and/or contact our Support team ahead of purchase. Recommended alternatives for this product can be found below, along with publications, customer reviews and Q&As</p> |

製品の特性

| | |
|--------|--|
| 製品の状態 | Liquid |
| 保存方法 | Shipped at 4°C. Upon delivery aliquot and store at -20°C. Avoid freeze / thaw cycles. |
| バッファー | pH: 7.40 Preservative: 0.02% Sodium azide Constituents: 50% Glycerol (glycerin, glycerine), 0.87% Sodium chloride, PBS |
| 精製度 | Without Mg+2 and Ca+2 Immunogen affinity purified |
| ポリ/モノ | ポリクローナル |
| アイソタイプ | IgG |

アプリケーション

The Abpromise guarantee

Abpromise保証は、次のテスト済みアプリケーションにおけるab53082の使用に適用されます

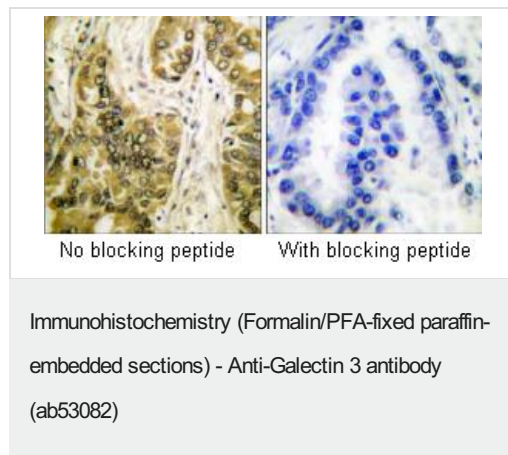
アプリケーションノートには、推奨の開始希釈率がありますが、適切な希釈率につきましてはご検討ください。

| アプリケーション | Abreviews | 特記事項 |
|----------|-----------|--|
| WB | | 1/500 - 1/1000. Detects a band of approximately 26 kDa (predicted molecular weight: 26 kDa). |
| IHC-P | ★★★★★ (1) | 1/50 - 1/100. |

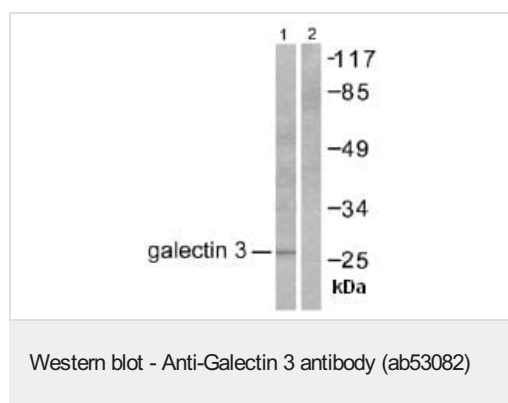
ターゲット情報

| | |
|-------|---|
| 機能 | Galactose-specific lectin which binds IgE. May mediate with the alpha-3, beta-1 integrin the stimulation by CSPG4 of endothelial cells migration. Together with DMBT1, required for terminal differentiation of columnar epithelial cells during early embryogenesis. |
| 組織特異性 | A major expression is found in the colonic epithelium. It is also abundant in the activated macrophages. |
| 配列類似性 | Contains 1 galectin domain. |
| 細胞内局在 | Nucleus. Cytoplasmic in adenomas and carcinomas. May be secreted by a non-classical secretory pathway and associate with the cell surface. |

画像



Immunohistochemical analysis of paraffin-embedded human lung carcinoma tissue using ab53082 at 1/50 dilution, with and without blocking peptide (ab53082 immunogen).



All lanes : Anti-Galectin 3 antibody (ab53082) at 1/500 dilution

Lane 1 : HeLa cell extract

Lane 2 : HeLa cell extract with blocking peptide (ab53082 immunogen)

Predicted band size: 26 kDa

Observed band size: 26 kDa

Please note: All products are "FOR RESEARCH USE ONLY. NOT FOR USE IN DIAGNOSTIC PROCEDURES"

Our Abpromise to you: Quality guaranteed and expert technical support

- Replacement or refund for products not performing as stated on the datasheet
- Valid for 12 months from date of delivery
- Response to your inquiry within 24 hours

- We provide support in Chinese, English, French, German, Japanese and Spanish
- Extensive multi-media technical resources to help you
- We investigate all quality concerns to ensure our products perform to the highest standards

If the product does not perform as described on this datasheet, we will offer a refund or replacement. For full details of the Abpromise, please visit <https://www.abcam.co.jp/abpromise> or contact our technical team.

Terms and conditions

- Guarantee only valid for products bought direct from Abcam or one of our authorized distributors