

### Anti-Galectin 3 antibody [A3A12] ab2785

★★★★★ [16 Abreviews](#) [61 References](#) [画像数 9](#)

#### 製品の概要

製品名	Anti-Galectin 3 antibody [A3A12]
製品の詳細	Mouse monoclonal [A3A12] to Galectin 3
由来種	Mouse
特異性	By Western blot, this antibody detects an ~30 kDa protein representing Galectin 3 from Jurkat cells transfected with human Galectin 3. Immunohistochemical staining of Galectin 3 in rat olfactory bulb yields a pattern consistent with nuclear and plasma membrane staining.
アプリケーション	<b>適用あり:</b> WB, ICC/IF, IHC-P
種交差性	<b>交差種:</b> Mouse, Human
免疫原	Recombinant full length protein corresponding to Human Galectin 3.
エピトープ	The epitope for this antibody has been mapped to the first 58 amino acids of Galectin 3.
ポジティブ・コントロール	WB: HeLa, MCF7 whole cell lysates. IHC-P: Human ovarian, colon and mouse colon tissue. ICC: HeLa, MCF7 and NIH-3T3 cells.
特記事項	<p>This antibody has been shown to potentiate the binding of Galectin 3 to IgG.</p> <p>The Life Science industry has been in the grips of a reproducibility crisis for a number of years. Abcam is leading the way in addressing this with our range of recombinant monoclonal antibodies and knockout edited cell lines for gold-standard validation. Please check that this product meets your needs before purchasing.</p> <p>If you have any questions, special requirements or concerns, please send us an inquiry and/or contact our Support team ahead of purchase. Recommended alternatives for this product can be found below, along with publications, customer reviews and Q&amp;As</p>

#### 製品の特性

製品の状態	Liquid
保存方法	Shipped at 4°C. Store at +4°C short term (1-2 weeks). Upon delivery aliquot. Store at -20°C or -80°C. Avoid freeze / thaw cycle.
バッファー	Preservative: 0.05% Sodium azide Constituent: 99% PBS
精製度	Affinity purified

一次抗体 備考	This antibody has been shown to potentiate the binding of Galectin 3 to IgG.
ポリ/モノ	モノクローナル
クローン名	A3A12
アイソタイプ	IgG1

## アプリケーション

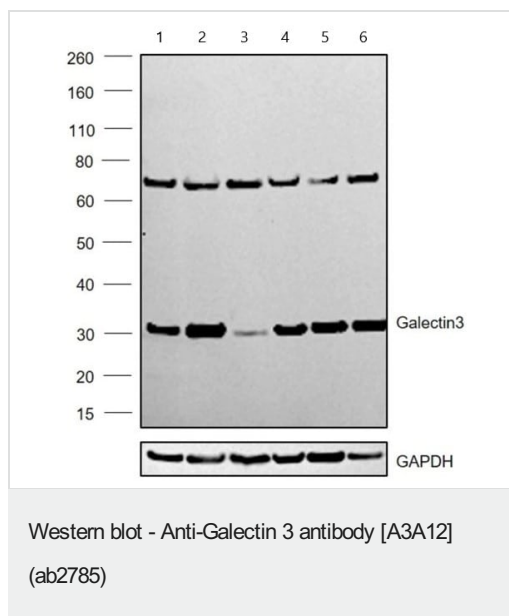
**The Abpromise guarantee** Abpromise保証は、次のテスト済みアプリケーションにおけるab2785の使用に適用されます  
 アプリケーションノートには、推奨の開始希釈率がありますが、適切な希釈率につきましてはご検討ください。

アプリケーション	Abreviews	特記事項
WB	★★★★★ (3)	Use a concentration of 1 µg/ml. Detects a band of approximately 30 kDa (predicted molecular weight: 26 kDa).
ICC/IF	★★★★★ (5)	1/100 - 1/200.
IHC-P	★★★★★ (3)	1/20 - 1/200.

## ターゲット情報

機能	Galactose-specific lectin which binds IgE. May mediate with the alpha-3, beta-1 integrin the stimulation by CSPG4 of endothelial cells migration. Together with DMBT1, required for terminal differentiation of columnar epithelial cells during early embryogenesis.
組織特異性	A major expression is found in the colonic epithelium. It is also abundant in the activated macrophages.
配列類似性	Contains 1 galectin domain.
細胞内局在	Nucleus. Cytoplasmic in adenomas and carcinomas. May be secreted by a non-classical secretory pathway and associate with the cell surface.

## 画像



**All lanes :** Anti-Galectin 3 antibody [A3A12] (ab2785) at 1/1000 dilution

**Lane 1 :** HeLa (human epithelial cell line from cervix adenocarcinoma) whole cell lysate

**Lane 2 :** MDA-MB-231 (human breast adenocarcinoma cell line) whole cell lysate

**Lane 3 :** A549 (human lung carcinoma cell line) whole cell lysate

**Lane 4 :** PC-3 (human prostate adenocarcinoma cell line) whole cell lysate

**Lane 5 :** U-87 MG (human glioblastoma-astrocytoma epithelial cell line) whole cell lysate

**Lane 6 :** A431 (human epidermoid carcinoma cell line) whole cell lysate

Lysates/proteins at 30 µg per lane.

### Secondary

**All lanes :** Goat anti-Mouse IgG (H+L) (HRP) at 1/4000 dilution

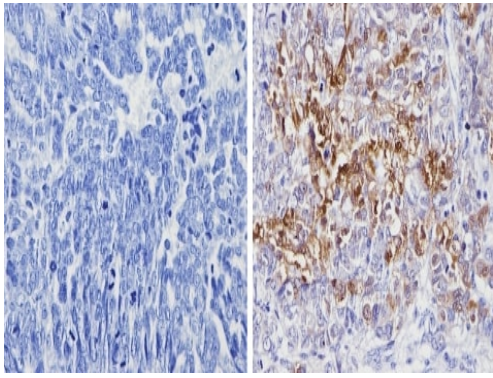
Developed using the ECL technique.

**Predicted band size:** 26 kDa

**Observed band size:** 30 kDa

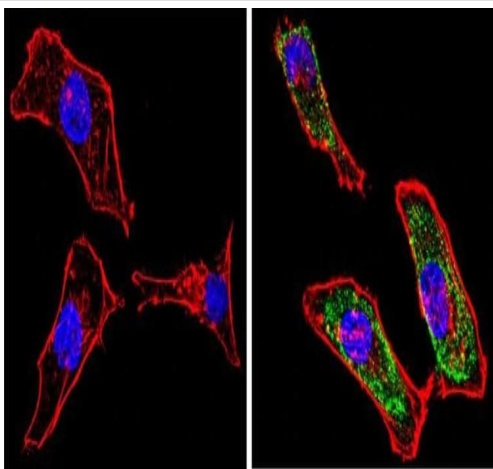
**Additional bands at:** 70 kDa. We are unsure as to the identity of these extra bands.

Whole cell extracts were electrophoresed using a 4-12% Bis-Tris Protein Gel. Resolved proteins were then transferred onto a Nitrocellulose membrane using a dry blotting system.



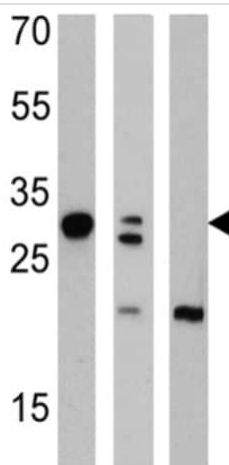
Immunohistochemistry (Formalin/PFA-fixed paraffin-embedded sections) - Anti-Galectin 3 antibody [A3A12] (ab2785)

Immunohistochemical analysis of human ovarian carcinoma tissue (right) labeling Galectin 3 in the nucleus and cytoplasm with ab2785, compared with a negative control (left) by Immunohistochemistry (formalin/PFA-fixed paraffin-embedded sections). To expose target proteins, antigen retrieval method was performed using 10mM sodium citrate (pH 6.0) microwaved for 8-15 min. Following antigen retrieval, tissues were blocked in 3% H<sub>2</sub>O<sub>2</sub>-methanol for 15 min at room temperature. Tissue sections were incubated with the primary antibody (1:100 in 3% BSA-PBS) overnight at 4°C. A HRP-conjugated anti-mouse IgG was used as the secondary antibody, followed by colorimetric detection using a DAB kit. Tissues were counterstained with hematoxylin and dehydrated with ethanol and xylene to prep for mounting.



Immunocytochemistry/ Immunofluorescence - Anti-Galectin 3 antibody [A3A12] (ab2785)

Immunofluorescent analysis of HeLa (Human epithelial cell line from cervix adenocarcinoma) cells labeling Galectin 3 (green) in the cytoplasm and nucleus with ab2785. Formalin-fixed cells were permeabilized with 0.1% Triton X-100 in TBS for 5-10 minutes and blocked with 3% BSA-PBS for 30 minutes at room temperature. Cells were probed with a Galectin 3 monoclonal antibody (Product # MA1-940) in 3% BSA-PBS at a dilution of 1:100 and incubated overnight at 4 °C in a humidified chamber. Cells were washed with PBST and incubated with a DyLight-conjugated secondary antibody in PBS at room temperature in the dark. F-actin (red) was stained with a fluorescent red phalloidin and nuclei (blue) were stained with Hoechst or DAPI. Images were taken at a magnification of 60x



Western blot - Anti-Galectin 3 antibody [A3A12] (ab2785)

**All lanes :** Anti-Galectin 3 antibody [A3A12] (ab2785) at 1/1000 dilution

**Lane 1 :** MCF7 (Human breast adenocarcinoma cell line) whole cell lysate

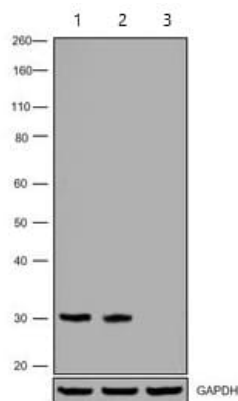
**Lane 2 :** HeLa (Human epithelial cell line from cervix adenocarcinoma) whole cell lysate

**Lane 3 :** NIH/3T3 (Mouse embryo fibroblast cell line) whole cell lysate

Lysates/proteins at 25 µg/ml per lane.

**Predicted band size:** 26 kDa

**Observed band size:** 30 kDa



Western blot - Anti-Galectin 3 antibody [A3A12] (ab2785)

**All lanes** : Anti-Galectin 3 antibody [A3A12] (ab2785) at 1/1000 dilution

**Lane 1** : Wild-Type HeLa (human epithelial cell line from cervix adenocarcinoma) membrane extract

**Lane 2** : HeLa CAS9 membrane extract

**Lane 3** : HeLa LGALS3 knockout membrane extract

Lysates/proteins at 30 µg per lane.

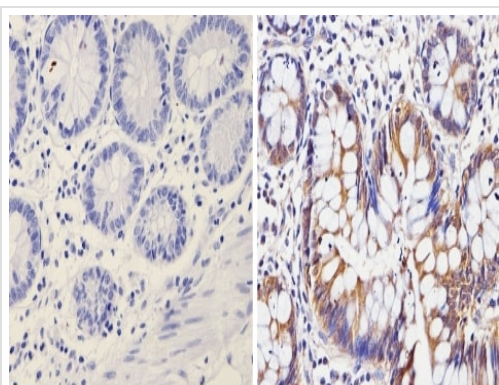
### Secondary

**All lanes** : Goat anti-Mouse IgG (H+L) (HRP) at 1/4000 dilution

Developed using the ECL technique.

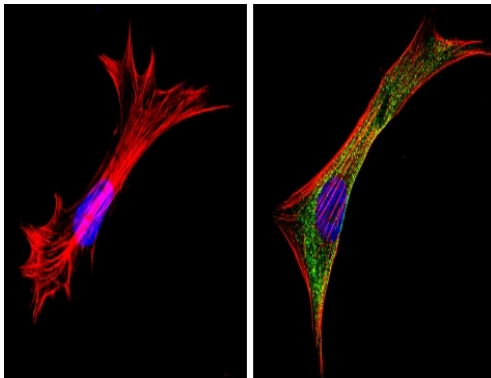
**Predicted band size:** 26 kDa

Knockout of LGALS3 was achieved by CRISPR-Cas9 genome editing using Lentiviral sgRNA and Cas9 Lentivirus. The samples were electrophoresed using 4-12% Bis-Tris Protein Gel. Resolved proteins were then transferred onto a nitrocellulose membrane using a dry blotting system.



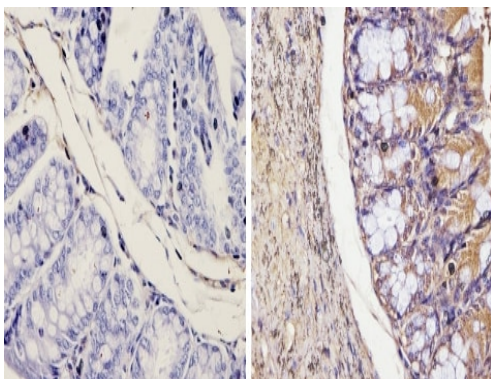
Immunohistochemistry (Formalin/PFA-fixed paraffin-embedded sections) - Anti-Galectin 3 antibody [A3A12] (ab2785)

Immunohistochemical analysis (formalin/PFA-fixed paraffin-embedded sections) human colon tissue (right) labelling Galectin 3 in the nucleus and cytoplasm with ab2785, compared with a negative control (left). To expose target proteins, antigen retrieval method was performed using 10mM sodium citrate (pH 6.0) microwaved for 8-15 min. Following antigen retrieval, tissues were blocked in 3% H<sub>2</sub>O<sub>2</sub>-methanol for 15 min at room temperature. Tissue sections were incubated with the primary antibody (1:100 in 3% BSA-PBS) overnight at 4°C. A HRP-conjugated anti-mouse IgG was used as the secondary antibody, followed by colorimetric detection using a DAB kit. Tissues were counterstained with hematoxylin and dehydrated with ethanol and xylene to prep for mounting.



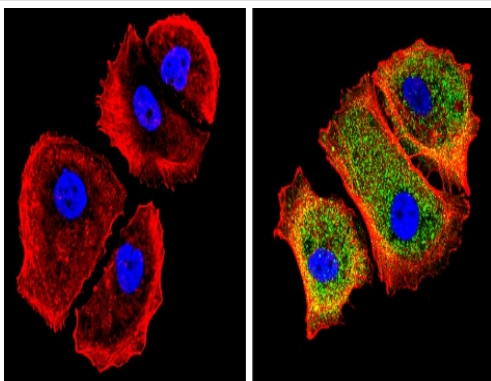
Immunocytochemistry/ Immunofluorescence - Anti-Galectin 3 antibody [A3A12] (ab2785)

Immunofluorescent analysis of NIH/3T3 (Mouse embryo fibroblast cell line) cells labelling Galectin 3 (green) in the cytoplasm and nucleus with ab2785. Formalin-fixed cells were permeabilized with 0.1% Triton X-100 in TBS for 5-10 minutes and blocked with 3% BSA-PBS for 30 minutes at room temperature. Cells were incubated with the primary antibody (1:100 in 3% BSA-PBS) overnight at 4 °C. A DyLight-conjugated anti-mouse was used as the secondary antibody. Red (phalloidin) - F-actin, Blue - nuclei. Images were taken at a magnification of 60x.



Immunohistochemistry (Formalin/PFA-fixed paraffin-embedded sections) - Anti-Galectin 3 antibody [A3A12] (ab2785)

Immunohistochemical analysis of (formalin/PFA-fixed paraffin-embedded sections) mouse colon tissue (right) labelling Galectin 3 in the nucleus and cytoplasm with ab2785, compared with a negative control (left) by . To expose target proteins, antigen retrieval method was performed using 10mM sodium citrate (pH 6.0) microwaved for 8-15 min. Following antigen retrieval, tissues were blocked in 3% H<sub>2</sub>O<sub>2</sub>-methanol for 15 min at room temperature. Tissue sections were incubated with the primary antibody (1:20 in 3% BSA-PBS) overnight at 4°C. A HRP-conjugated anti-mouse IgG was used as the secondary antibody, followed by colorimetric detection using a DAB kit. Tissues were counterstained with hematoxylin and dehydrated with ethanol and xylene to prep for mounting.



Immunocytochemistry/ Immunofluorescence - Anti-Galectin 3 antibody [A3A12] (ab2785)

Immunofluorescent analysis of MCF7 (Human breast adenocarcinoma cell line) cells labelling Galectin 3 (green) in the cytoplasm and nucleus with ab2785. Formalin-fixed cells were permeabilized with 0.1% Triton X-100 in TBS for 5-10 minutes and blocked with 3% BSA-PBS for 30 minutes at room temperature. Cells were incubated with the primary antibody (1:100 in 3% BSA-PBS) overnight at 4 °C. A DyLight-conjugated anti-mouse was used as the secondary antibody. Red (phalloidin) - F-actin, Blue - nuclei. Images were taken at a magnification of 60x.

**Please note:** All products are "FOR RESEARCH USE ONLY. NOT FOR USE IN DIAGNOSTIC PROCEDURES"

### **Our Abpromise to you: Quality guaranteed and expert technical support**

---

- Replacement or refund for products not performing as stated on the datasheet
- Valid for 12 months from date of delivery
- Response to your inquiry within 24 hours
  
- We provide support in Chinese, English, French, German, Japanese and Spanish
- Extensive multi-media technical resources to help you
- We investigate all quality concerns to ensure our products perform to the highest standards

If the product does not perform as described on this datasheet, we will offer a refund or replacement. For full details of the Abpromise, please visit <https://www.abcam.co.jp/abpromise> or contact our technical team.

### **Terms and conditions**

---

- Guarantee only valid for products bought direct from Abcam or one of our authorized distributors