




Anti-GABA A Receptor alpha 1 antibody [N95/35] ab94585

[7 References](#) [画像数 2](#)

製品の概要

製品名	Anti-GABA A Receptor alpha 1 antibody [N95/35]
製品の詳細	Mouse monoclonal [N95/35] to GABA A Receptor alpha 1
由来種	Mouse
特異性	ab94585 does not react with GABA A Receptor Alpha 2 or Alpha 3.
アプリケーション	適用あり: WB, IHC-P
種交差性	交差種: Mouse, Human 交差が予測される動物種: Rat, Cow, Cynomolgus monkey, Orangutan 
免疫原	Recombinant fragment within Mouse GABA A Receptor alpha 1 aa 350-450. The exact immunogen sequence used to generate this antibody is proprietary information. If additional detail on the immunogen is needed to determine the suitability of the antibody for your needs, please contact our Scientific Support team to discuss your requirements. Database link: P62812  Run BLAST with  Run BLAST with
ポジティブ・コントロール	WB: Rat brain normal tissue lysate - membrane extract (ab29473), Human cell line mix lysate. IHC-P: Mouse back skin tissue.
特記事項	<p>The clone number has been updated from S95-35 to N95/35, both clone numbers name the same antibody clone.</p> <p>The Life Science industry has been in the grips of a reproducibility crisis for a number of years. Abcam is leading the way in addressing this with our range of recombinant monoclonal antibodies and knockout edited cell lines for gold-standard validation. Please check that this product meets your needs before purchasing.</p> <p>If you have any questions, special requirements or concerns, please send us an inquiry and/or contact our Support team ahead of purchase. Recommended alternatives for this product can be found below, along with publications, customer reviews and Q&As</p>

製品の特性

製品の状態	Liquid
保存方法	Shipped at 4°C. Upon delivery aliquot and store at -20°C. Avoid freeze / thaw cycles.
バッファー	Preservative: 0.09% Sodium azide Constituents: 50% Glycerol (glycerin, glycerine), PBS

精製度	Protein G purified
ポリ/モノ	モノクローナル
クローン名	N95/35
アイソタイプ	IgG2a

アプリケーション

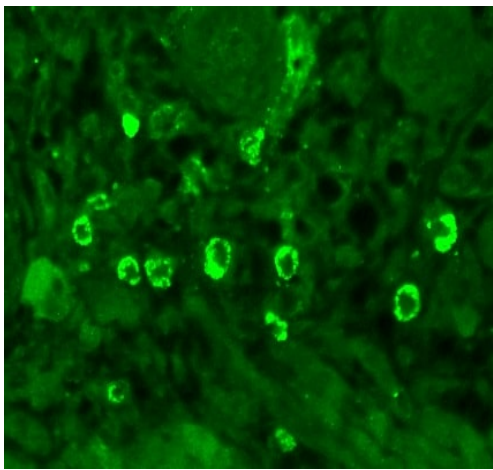
The Abpromise guarantee Abpromise保証は、次のテスト済みアプリケーションにおけるab94585の使用に適用されます
 アプリケーションノートには、推奨の開始希釈率がありますが、適切な希釈率につきましてはご確認ください。

アプリケーション	Abreviews	特記事項
WB		Use a concentration of 1 - 10 µg/ml. Detects a band of approximately 55 kDa (predicted molecular weight: 52 kDa).
IHC-P		Use a concentration of 0.1 - 1 µg/ml.

ターゲット情報

機能	GABA, the major inhibitory neurotransmitter in the vertebrate brain, mediates neuronal inhibition by binding to the GABA/benzodiazepine receptor and opening an integral chloride channel.
関連疾患	Defects in GABRA1 are the cause of childhood absence epilepsy type 4 (ECA4) [MIM:611136]. A subtype of idiopathic generalized epilepsy characterized by onset at age 6-7 years, frequent absence seizures (several per day) and bilateral, synchronous, symmetric 3-Hz spike waves on EEG. During adolescence, tonic-clonic and myoclonic seizures may develop. Absence seizures may either remit or persist into adulthood. Defects in GABRA1 are the cause of juvenile myoclonic epilepsy type 5 (EJM5) [MIM:611136]. A subtype of idiopathic generalized epilepsy. Patients have afebrile seizures only, with onset in adolescence (rather than in childhood) and myoclonic jerks which usually occur after awakening and are triggered by sleep deprivation and fatigue.
配列類似性	Belongs to the ligand-gated ion channel (TC 1.A.9) family. Gamma-aminobutyric acid receptor (TC 1.A.9.5) subfamily. GABRA1 sub-subfamily.
細胞内局在	Cell junction > synapse > postsynaptic cell membrane. Cell membrane.

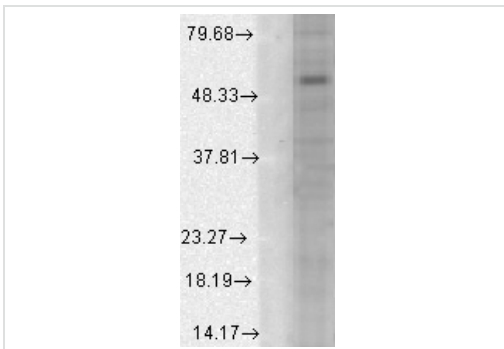
画像



Immunohistochemistry (Formalin/PFA-fixed paraffin-embedded sections) - Anti-GABA A Receptor alpha 1 antibody [N95/35] (ab94585)

Bouin's Fixative and paraffin-embedded mouse back skin tissue stained for GABA A Receptor alpha 1 with ab94585 (1/100 dilution for 1 hour at RT) in immunohistochemical analysis.

Secondary antibody is a FITC Goat Anti-Mouse (green) at 1:50 for 1 hour at RT. Localization: Dermal Cells.



Western blot - Anti-GABA A Receptor alpha 1 antibody [N95/35] (ab94585)

Anti-GABA A Receptor alpha 1 antibody [N95/35] (ab94585) at 1/1000 dilution + Human cell line mix lysates at 15 µg

Secondary

Sheep Anti-Mouse IgG: HRP

Predicted band size: 52 kDa

Block: 1% BSA.

Primary antibody incubated for 2 hours at RT.

Secondary antibody incubated for 1 hour at RT.

Please note: All products are "FOR RESEARCH USE ONLY. NOT FOR USE IN DIAGNOSTIC PROCEDURES"

Our Abpromise to you: Quality guaranteed and expert technical support

- Replacement or refund for products not performing as stated on the datasheet
- Valid for 12 months from date of delivery
- Response to your inquiry within 24 hours

- We provide support in Chinese, English, French, German, Japanese and Spanish
- Extensive multi-media technical resources to help you
- We investigate all quality concerns to ensure our products perform to the highest standards

If the product does not perform as described on this datasheet, we will offer a refund or replacement. For full details of the Abpromise, please visit <https://www.abcam.co.jp/abpromise> or contact our technical team.

Terms and conditions

- Guarantee only valid for products bought direct from Abcam or one of our authorized distributors