


Anti-GAB1 antibody ab59362

[6 References](#) [画像数 3](#)

製品の概要

製品名	Anti-GAB1 antibody
製品の詳細	Rabbit polyclonal to GAB1
由来種	Rabbit
アプリケーション	適用あり: ICC/IF, WB, IHC-P
種交差性	交差種: Mouse, Human 交差が予測される動物種: Rat 
免疫原	Synthesized non phosphopeptide derived from human GAB1 around the phosphorylation site of tyrosine 659 (VDY ^P VV).
特記事項	<p>The Life Science industry has been in the grips of a reproducibility crisis for a number of years. Abcam is leading the way in addressing this with our range of recombinant monoclonal antibodies and knockout edited cell lines for gold-standard validation. Please check that this product meets your needs before purchasing.</p> <p>If you have any questions, special requirements or concerns, please send us an inquiry and/or contact our Support team ahead of purchase. Recommended alternatives for this product can be found below, along with publications, customer reviews and Q&As</p>

製品の特性

製品の状態	Liquid
保存方法	Shipped at 4°C. Upon delivery aliquot and store at -20°C. Avoid freeze / thaw cycles.
バッファー	pH: 7.40 Preservative: 0.02% Sodium azide Constituents: PBS, 50% Glycerol, 0.87% Sodium chloride
精製度	Without Mg+2 and Ca+2 Immunogen affinity purified
特記事項(精製)	Purified from rabbit antiserum by affinity chromatography, using epitope specific immunogen.
ポリ/モノ	ポリクローナル
アイソタイプ	IgG

アプリケーション

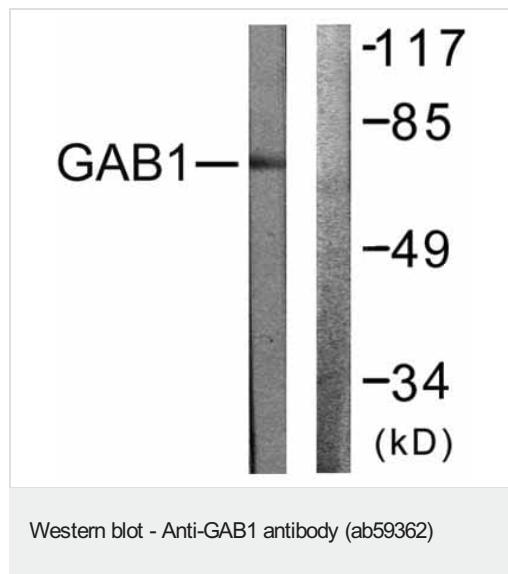
The Abpromise guarantee **Abpromise保証は、次のテスト済みアプリケーションにおけるab59362の使用に適用されます**
アプリケーションノートには、推奨の開始希釈率がありますが、適切な希釈率につきましてはご検討ください。

アプリケーション	Abreviews	特記事項
ICC/IF		Use a concentration of 1 - 5 µg/ml.
WB		1/500 - 1/1000. Detects a band of approximately 77 kDa.
IHC-P		Use at an assay dependent concentration.

ターゲット情報

機能	Probably involved in EGF and insulin receptor signaling.
配列類似性	Belongs to the GAB family. Contains 1 PH domain.
翻訳後修飾	Phosphorylated on tyrosine residue(s) by the epidermal growth factor receptor (EGFR) and the insulin receptor (INSR). Tyrosine phosphorylation of GAB1 mediates interaction with several proteins that contain SH2 domains.

画像

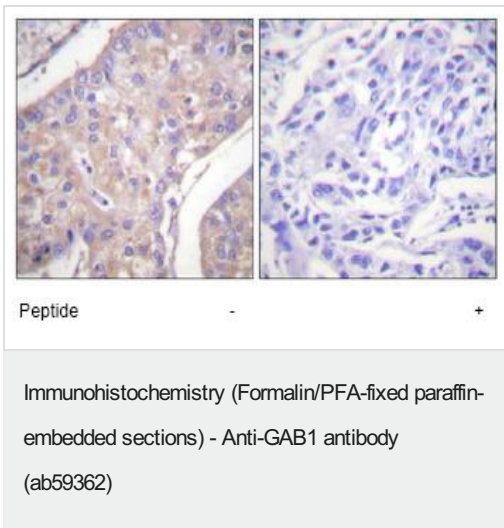


All lanes : Anti-GAB1 antibody (ab59362) at 1/500 dilution

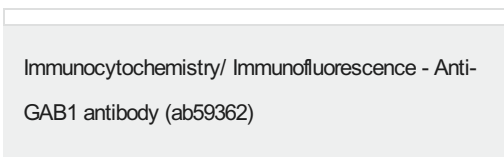
Lane 1 : Extracts from NIH/3T3 cells with no immunizing peptide

Lane 2 : Extracts from NIH/3T3 cells with immunizing peptide

Observed band size: 77 kDa



ab59362, at a 1/50 dilution, staining human GAB1 in breast carcinoma, using Immunohistochemistry, Paraffin embedded tissue, in the absence of the immunizing peptide (left image) and in the presence of the immunizing peptide (right image).



ICC/IF image of ab59362 stained HeLa cells. The cells were 100% methanol fixed (5 min) and then incubated in 1%BSA / 10% normal goat serum / 0.3M glycine in 0.1% PBS-Tween for 1h to permeabilise the cells and block non-specific protein-protein interactions. The cells were then incubated with the antibody (ab59362, 1µg/ml) overnight at +4°C. The secondary antibody (green) was Alexa Fluor® 488 goat anti-rabbit IgG (H+L) used at a 1/1000 dilution for 1h. Alexa Fluor® 594 WGA was used to label plasma membranes (red) at a 1/200 dilution for 1h. DAPI was used to stain the cell nuclei (blue) at a concentration of 1.43µM.

Please note: All products are "FOR RESEARCH USE ONLY. NOT FOR USE IN DIAGNOSTIC PROCEDURES"

Our Abpromise to you: Quality guaranteed and expert technical support

- Replacement or refund for products not performing as stated on the datasheet
- Valid for 12 months from date of delivery
- Response to your inquiry within 24 hours
- We provide support in Chinese, English, French, German, Japanese and Spanish
- Extensive multi-media technical resources to help you
- We investigate all quality concerns to ensure our products perform to the highest standards

If the product does not perform as described on this datasheet, we will offer a refund or replacement. For full details of the Abpromise,

please visit <https://www.abcam.co.jp/abpromise> or contact our technical team.

Terms and conditions

- Guarantee only valid for products bought direct from Abcam or one of our authorized distributors