


### Anti-G-protein coupled receptor 30 antibody ab39742

★★★★★ [11 Abreviews](#) [99 References](#) [画像数 4](#)

#### 製品の概要

製品名	Anti-G-protein coupled receptor 30 antibody
製品の詳細	Rabbit polyclonal to G-protein coupled receptor 30
由来種	Rabbit
特異性	From Jan 2024, QC testing of replenishment batches of this polyclonal changed. All tested and expected application and reactive species combinations are still covered by our Abcam product promise. However, we no longer test all applications. For more information on a specific batch, please contact our Scientific Support who will be happy to help. You may also be interested in our alternative recombinant antibody, <a href="#">ab260033</a> .
アプリケーション	適用あり: WB, ICC
種交差性	交差種: Human 交差が予測される動物種: Mouse, Rat 
免疫原	Synthetic peptide conjugated to KLH derived from within residues 350 to the C-terminus of Human GPCR GPR30. Immunogen の所有権に関して (Peptide available as <a href="#">ab41565</a> .)
ポジティブ・コントロール	ICC: Primary rat neurons/glia, DIV14 cells. U87-MG cells. WB: Human brain normal tissue membrane lysate.
特記事項	<p>The Life Science industry has been in the grips of a reproducibility crisis for a number of years. Abcam is leading the way in addressing this with our range of recombinant monoclonal antibodies and knockout edited cell lines for gold-standard validation. Please check that this product meets your needs before purchasing.</p> <p>If you have any questions, special requirements or concerns, please send us an inquiry and/or contact our Support team ahead of purchase. Recommended alternatives for this product can be found below, along with publications, customer reviews and Q&amp;As</p>

#### 製品の特性

製品の状態	Liquid
保存方法	Shipped at 4°C. Store at +4°C short term (1-2 weeks). Upon delivery aliquot. Store at -20°C or -80°C. Avoid freeze / thaw cycle.
バッファー	pH: 7.40 Preservative: 0.02% Sodium azide Constituent: PBS

Batches of this product that have a concentration < 1mg/ml may have BSA added as a stabilising agent. If you would like information about the formulation of a specific lot, please contact our scientific support team who will be happy to help.

精製度	Immunogen affinity purified
ポリ/モノ	ポリクローナル
アイソタイプ	IgG

## アプリケーション

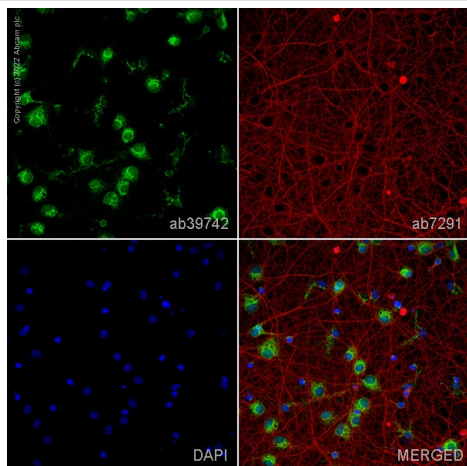
**The Abpromise guarantee**      **Abpromise保証は、次のテスト済みアプリケーションにおけるab39742の使用に適用されます**  
アプリケーションノートには、推奨の開始希釈率がありますが、適切な希釈率につきましてはご検討ください。

アプリケーション	Abreviews	特記事項
WB	★★★★★ (5)	1/250. Detects a band of approximately 55 kDa (predicted molecular weight: 42 kDa).
ICC		Use a concentration of 1 µg/ml.

## ターゲット情報

機能	Receptor for estrogen.
組織特異性	Ubiquitously expressed, but is most abundant in placenta. In brain regions, expressed as a 2.8 kb transcript in basal forebrain, frontal cortex, thalamus, hippocampus, caudate and putamen.
配列類似性	Belongs to the G-protein coupled receptor 1 family.
細胞内局在	Cell membrane. Endoplasmic reticulum membrane. Golgi apparatus membrane. Protein has been detected in the cell membrane, endoplasmic reticulum and Golgi apparatus. It is currently unclear whether this is a cell surface or intracellular receptor.

## 画像

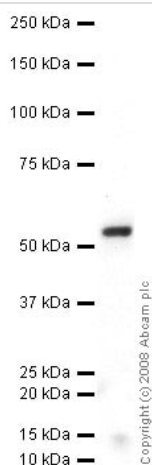


Immunocytochemistry - Anti-G-protein coupled receptor 30 antibody (ab39742)

ab39742 staining G-protein coupled receptor 30 in primary rat neurons/glia, DIV14 (prepared from E18 rat hippocampal brain area, obtained from Transnetix Tissue by BrainBits, LLC, cat.no. SDHEP) cells. The cells were fixed with 100% methanol (5 min), permeabilized with 0.1% PBS-Tween for 5 minutes and then blocked with 1% BSA/10% normal goat serum/0.3M glycine in 0.1%PBS-Tween for 1h. The cells were then incubated overnight at 4°C with ab39742 at 1µg/ml and **ab7291**, Mouse monoclonal [DM1A] to alpha Tubulin - Loading Control. Cells were then incubated with **ab150081**, Goat polyclonal Secondary Antibody to Rabbit IgG - H&L (Alexa Fluor® 488), pre-adsorbed at 1/1000 dilution (shown in green) and **ab150120**, Goat polyclonal Secondary Antibody to Mouse IgG - H&L (Alexa Fluor® 594), pre-adsorbed at 1/1000 dilution (shown in pseudocolour red). Nuclear DNA was labelled with DAPI (shown in blue).

Also suitable in cells fixed with 4% paraformaldehyde (10 min).

Image was acquired with a high-content analyser (Operetta CLS, Perkin Elmer) and a maximum intensity projection of confocal sections is shown.



Western blot - Anti-G-protein coupled receptor 30 antibody (ab39742)

Anti-G-protein coupled receptor 30 antibody (ab39742) at 1 µg/ml + Human brain normal tissue lysate - membrane extract (**ab29456**) at 10 µg

### Secondary

Goat polyclonal to Rabbit IgG - H&L - Pre-Adsorbed (HRP) at 1/3000 dilution

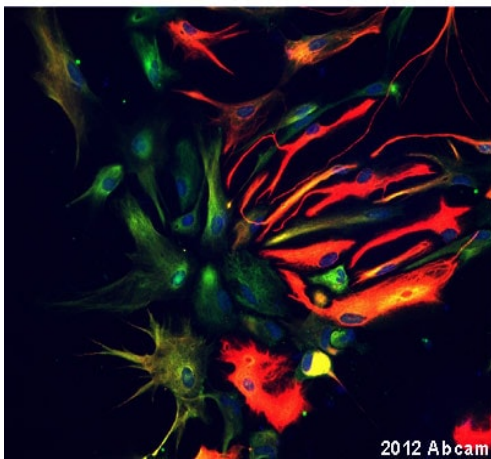
Developed using the ECL technique.

Performed under reducing conditions.

**Predicted band size:** 42 kDa

**Observed band size:** 55 kDa

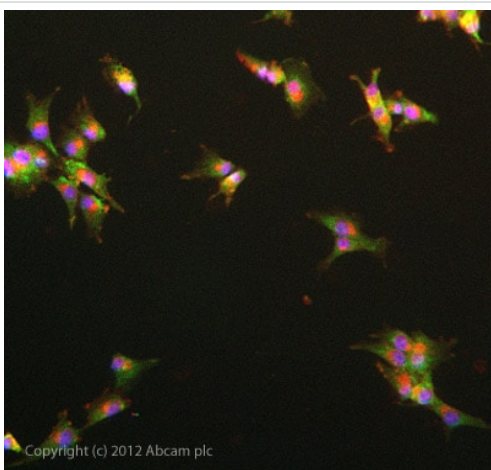
GPR30 contains a number of potential glycosylation sites (SwissProt) which may explain its migration at a higher molecular weight than predicted.



Immunocytochemistry - Anti-G-protein coupled receptor 30 antibody (ab39742)

This image is courtesy of an Abreview submitted by Ruma Raha-Chowdhury

ab39742 staining cultured rat primary astrocytes by ICC/IF. The cultured cells were fixed with 4% paraformaldehyde for 5 minutes and blocked with 10% donkey serum in 0.1% PBS-0.3% TritonX for 30 minutes at 24°C. The cultured cells were then stained with ab39742 at 1/500 in 0.3% TritonX with 0.1% PBS and 10% donkey serum for 4h at 24°C. An Alexa Fluor 488 donkey anti-rabbit polyclonal antibody at 1/1000 was used as the secondary antibody. Nuclei were stained with 1.43µM Hoechst and can be observed in blue. In red astrocytes can be observed (monoclonal anti GFAP).



Immunocytochemistry - Anti-G-protein coupled receptor 30 antibody (ab39742)

ICC/IF image of ab39742 stained U87-MG cells. The cells were 4% formaldehyde fixed (10 min) and then incubated in 1%BSA / 10% normal goat serum / 0.3M glycine in 0.1% PBS-Tween for 1h to permeabilise the cells and block non-specific protein-protein interactions. The cells were then incubated with the antibody ab39742 at 5µg/ml overnight at +4°C. The secondary antibody (green) was DyLight® 488 goat anti- rabbit ([ab96899](#)) IgG (H+L) used at a 1/1000 dilution for 1h. Alexa Fluor® 594 WGA was used to label plasma membranes (red) at a 1/200 dilution for 1h. DAPI was used to stain the cell nuclei (blue) at a concentration of 1.43µM.

**Please note:** All products are "FOR RESEARCH USE ONLY. NOT FOR USE IN DIAGNOSTIC PROCEDURES"

### Our Abpromise to you: Quality guaranteed and expert technical support

- Replacement or refund for products not performing as stated on the datasheet
- Valid for 12 months from date of delivery
- Response to your inquiry within 24 hours
- We provide support in Chinese, English, French, German, Japanese and Spanish
- Extensive multi-media technical resources to help you
- We investigate all quality concerns to ensure our products perform to the highest standards

If the product does not perform as described on this datasheet, we will offer a refund or replacement. For full details of the Abpromise, please visit <https://www.abcam.co.jp/abpromise> or contact our technical team.

#### **Terms and conditions**

---

- Guarantee only valid for products bought direct from Abcam or one of our authorized distributors