

Anti-G-CSF antibody [KT26] ab110652

画像数 1

製品の概要

製品名	Anti-G-CSF antibody [KT26]
製品の詳細	Mouse monoclonal [KT26] to G-CSF
由来種	Mouse
アプリケーション	適用あり: Sandwich ELISA
種交差性	交差種: Human
免疫原	Recombinant Human G-CSF
特記事項	<p>The Life Science industry has been in the grips of a reproducibility crisis for a number of years. Abcam is leading the way in addressing this with our range of recombinant monoclonal antibodies and knockout edited cell lines for gold-standard validation. Please check that this product meets your needs before purchasing.</p> <p>If you have any questions, special requirements or concerns, please send us an inquiry and/or contact our Support team ahead of purchase. Recommended alternatives for this product can be found below, along with publications, customer reviews and Q&As</p>

製品の特性

製品の状態	Liquid
保存方法	Shipped at 4°C. Store at +4°C short term (1-2 weeks). Upon delivery aliquot. Store at -20°C or -80°C. Avoid freeze / thaw cycle.
バッファー	Preservative: 0.1% Sodium azide Constituent: PBS
精製度	Protein A purified
ポリ/モノ	モノクローナル
クローン名	KT26
アイソタイプ	IgG2b

アプリケーション

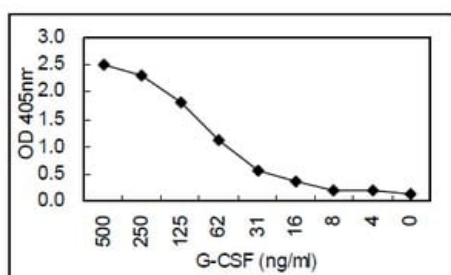
The Abpromise guarantee **Abpromise保証は、** 次のテスト済みアプリケーションにおけるab110652の使用に適用されます
アプリケーションノートには、推奨の開始希釈率がありますが、適切な希釈率につきましてはご確認ください。

アプリケーション	Abreviews	特記事項
Sandwich ELISA		Use a concentration of 5 µg/ml. as the detection antibody.

ターゲット情報

機能	Granulocyte/macrophage colony-stimulating factors are cytokines that act in hematopoiesis by controlling the production, differentiation, and function of 2 related white cell populations of the blood, the granulocytes and the monocytes-macrophages. This CSF induces granulocytes.
配列類似性	Belongs to the IL-6 superfamily.
翻訳後修飾	O-glycan consists of Gal-GalNAc disaccharide which can be modified with up to two sialic acid residues (done in recombinantly expressed G-CSF from CHO cells).
細胞内局在	Secreted.

画像



Sandwich ELISA - Anti-G-CSF antibody [KT26]
(ab110652)

Sandwich ELISA using a ab110652 coated plate and HRP conjugated **ab106679** as a detection antibody.

Please note: All products are "FOR RESEARCH USE ONLY. NOT FOR USE IN DIAGNOSTIC PROCEDURES"

Our Abpromise to you: Quality guaranteed and expert technical support

- Replacement or refund for products not performing as stated on the datasheet
- Valid for 12 months from date of delivery
- Response to your inquiry within 24 hours
- We provide support in Chinese, English, French, German, Japanese and Spanish
- Extensive multi-media technical resources to help you
- We investigate all quality concerns to ensure our products perform to the highest standards

If the product does not perform as described on this datasheet, we will offer a refund or replacement. For full details of the Abpromise, please visit <https://www.abcam.co.jp/abpromise> or contact our technical team.

Terms and conditions

- Guarantee only valid for products bought direct from Abcam or one of our authorized distributors