



Anti-G-CSF antibody ab9691

★★★★★ [6 Abreviews](#) [11 References](#) [画像数 2](#)

製品の概要

| | |
|----------|---|
| 製品名 | Anti-G-CSF antibody |
| 製品の詳細 | Rabbit polyclonal to G-CSF |
| 由来種 | Rabbit |
| アプリケーション | 適用あり: WB, Sandwich ELISA |
| 種交差性 | 交差種: Human, Recombinant fragment |
| 免疫原 | Recombinant fragment corresponding to Human G-CSF aa 1 to the C-terminus. Produced in E.coli. Isoform Short of G-CSF. Database link: P09919-2 |
| 特記事項 | <div>  Run BLAST with  Run BLAST with </div> <p>Although some customers have been successful in IHC we no longer batch test in this application. For an IHC validated antibody please see ab216607.</p> <p>The Life Science industry has been in the grips of a reproducibility crisis for a number of years. Abcam is leading the way in addressing this with our range of recombinant monoclonal antibodies and knockout edited cell lines for gold-standard validation. Please check that this product meets your needs before purchasing.</p> <p>If you have any questions, special requirements or concerns, please send us an inquiry and/or contact our Support team ahead of purchase. Recommended alternatives for this product can be found below, along with publications, customer reviews and Q&As</p> |

製品の特性

| | |
|--------|--|
| 製品の状態 | Lyophilized:Reconstitute with 200µl of sterile water. |
| 保存方法 | Shipped at 4°C. Upon delivery aliquot and store at -20°C. Avoid repeated freeze / thaw cycles. |
| バッファー | No preservative, sterile filtered |
| 精製度 | Immunogen affinity purified |
| ポリ/モノ | ポリクローナル |
| アイソタイプ | IgG |
| 軽鎖の種類 | unknown |

アプリケーション

The Abpromise guarantee

Abpromise保証は、次のテスト済みアプリケーションにおけるab9691の使用に適用されます

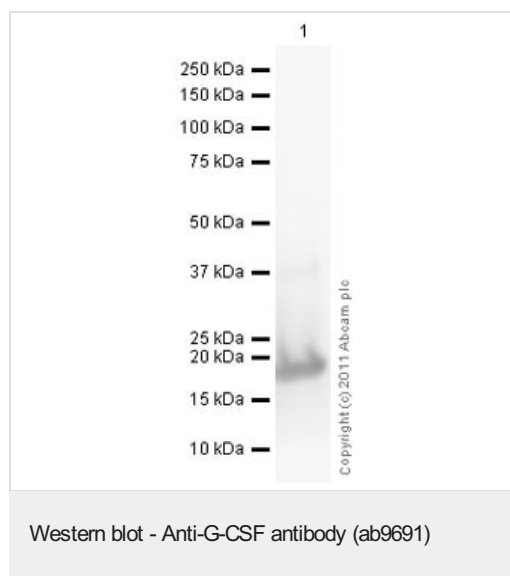
アプリケーションノートには、推奨の開始希釈率がありますが、適切な希釈率につきましてはご検討ください。

| アプリケーション | Abreviews | 特記事項 |
|----------------|-----------|---|
| WB | ★★★★★ (2) | Use at an assay dependent concentration. To detect hG-CSF by Western Blot analysis this antibody can be used at a concentration of 0.1 - 0.2 µg/ml. Used in conjunction with compatible secondary reagents the detection limit for recombinant hG-CSF is 1.5 - 3.0 ng/lane, under either reducing or non-reducing conditions. |
| Sandwich ELISA | | Use a concentration of 0.5 - 2 µg/ml. This antigen affinity purified antibody, in conjunction with ab271256 as a detection antibody, allows the detection of at least 0.2 - 0.4 ng/well of recombinant hG-CSF |

ターゲット情報

| | |
|-------|---|
| 機能 | Granulocyte/macrophage colony-stimulating factors are cytokines that act in hematopoiesis by controlling the production, differentiation, and function of 2 related white cell populations of the blood, the granulocytes and the monocytes-macrophages. This CSF induces granulocytes. |
| 配列類似性 | Belongs to the IL-6 superfamily. |
| 翻訳後修飾 | O-glycan consists of Gal-GalNAc disaccharide which can be modified with up to two sialic acid residues (done in recombinantly expressed G-CSF from CHO cells). |
| 細胞内局在 | Secreted. |

画像



Anti-G-CSF antibody (ab9691) at 1 µg/ml + Recombinant human G-CSF protein (**ab73371**) at 0.01 µg

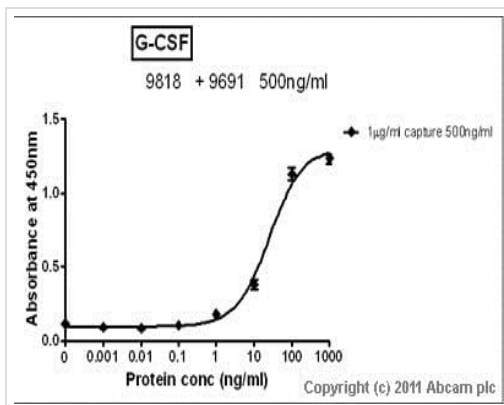
Secondary

Goat Anti-Rabbit IgG H&L (HRP) preadsorbed (**ab97080**) at 1/5000 dilution

Developed using the ECL technique.

Performed under reducing conditions.

Exposure time: 2 minutes



Sandwich ELISA - Anti-G-CSF antibody (ab9691)

Standard Curve for G-CSF (Analyte: **ab51298**) dilution range 1pg/ml to 1ug/ml using Capture Antibody Mouse monoclonal [5D7] to G-CSF (**ab9818**) at 1ug/ml and Detector Antibody Rabbit polyclonal to G-CSF (ab9691) at 0.5ug/ml

Please note: All products are "FOR RESEARCH USE ONLY. NOT FOR USE IN DIAGNOSTIC PROCEDURES"

Our Abpromise to you: Quality guaranteed and expert technical support

- Replacement or refund for products not performing as stated on the datasheet
- Valid for 12 months from date of delivery
- Response to your inquiry within 24 hours
- We provide support in Chinese, English, French, German, Japanese and Spanish
- Extensive multi-media technical resources to help you
- We investigate all quality concerns to ensure our products perform to the highest standards

If the product does not perform as described on this datasheet, we will offer a refund or replacement. For full details of the Abpromise, please visit <https://www.abcam.co.jp/abpromise> or contact our technical team.

Terms and conditions

- Guarantee only valid for products bought direct from Abcam or one of our authorized distributors