

Anti-FZR1 antibody [AR38.2] ab77885

KO 評価済

2 References [画像数 1](#)

製品の概要

製品名	Anti-FZR1 antibody [AR38.2]
製品の詳細	Mouse monoclonal [AR38.2] to FZR1
由来種	Mouse
アプリケーション	適用あり: WB
種交差性	交差種: Human
免疫原	Recombinant full length protein corresponding to FZR1. Database link: Q9UM11
ポジティブ・コントロール	WB: HEK293, HeLa and A431 cell lysates.
特記事項	<p>The Life Science industry has been in the grips of a reproducibility crisis for a number of years. Abcam is leading the way in addressing this with our range of recombinant monoclonal antibodies and knockout edited cell lines for gold-standard validation. Please check that this product meets your needs before purchasing.</p> <p>If you have any questions, special requirements or concerns, please send us an inquiry and/or contact our Support team ahead of purchase. Recommended alternatives for this product can be found below, along with publications, customer reviews and Q&As</p>

製品の特性

製品の状態	Liquid
保存方法	Shipped at 4°C. Upon delivery aliquot and store at -20°C or -80°C. Avoid repeated freeze / thaw cycles.
バッファー	Preservative: 0.02% Sodium azide Constituent: 99.98% PBS
精製度	Protein A/G purified
ポリ/モノ	モノクローナル
クローン名	AR38.2
ミエローマ	Sp2/0-Ag14
アイソタイプ	IgG1

アプリケーション

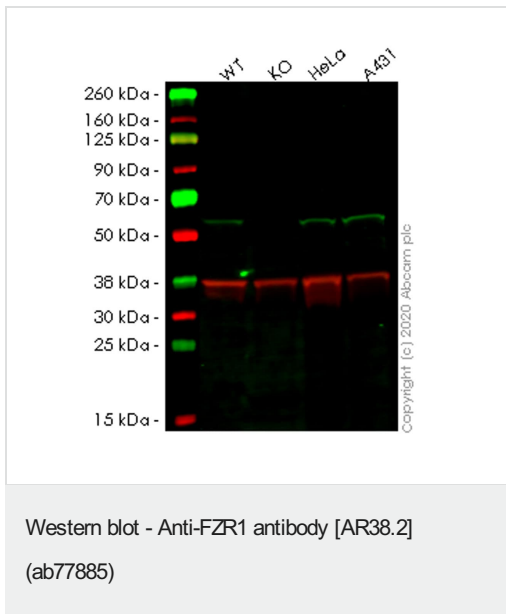
The Abpromise guarantee **Abpromise保証は、次のテスト済みアプリケーションにおけるab77885の使用に適用されず**
アプリケーションノートには、推奨の開始希釈率がありますが、適切な希釈率につきましてはご検討ください。

アプリケーション	Abreviews	特記事項
WB		1/500. Predicted molecular weight: 55 kDa.

ターゲット情報

機能	Key regulator of ligase activity of the anaphase promoting complex/cyclosome (APC/C), which confers substrate specificity upon the complex. Associates with the APC/C in late mitosis, in replacement of CDC20, and activates the APC/C during anaphase and telophase. The APC/C remains active in degrading substrates to ensure that positive regulators of the cell cycle do not accumulate prematurely. At the G1/S transition FZR1 is phosphorylated, leading to its dissociation from the APC/C. Following DNA damage, it is required for the G2 DNA damage checkpoint: its dephosphorylation and reassociation with the APC/C leads to the ubiquitination of PLK1, preventing entry into mitosis.
組織特異性	Isoform 2 is expressed at high levels in heart, liver, spleen and some cancer cell lines whereas isoform 3 is expressed only at low levels in these tissues.
パスウェイ	Protein modification; protein ubiquitination.
配列類似性	Belongs to the WD repeat CDC20/Fizzy family. Contains 7 WD repeats.
翻訳後修飾	Phosphorylated during mitosis, probably by maturation promoting factor (MPF), leading to its dissociation of the APC/C. Following DNA damage, it is dephosphorylated by CDC14B in G2 phase, leading to its reassociation with the APC/C, and allowing an efficient G2 DNA damage checkpoint.
細胞内局在	Cytoplasm and Nucleus.

画像



All lanes : Anti-FZR1 antibody [AR38.2] (ab77885) at 1/500 dilution

Lane 1 : Wild-type HEK-293T (Human epithelial cell line from embryonic kidney transformed with large T antigen) whole cell lysate

Lane 2 : FZR1 knockout HEK-293T (Human epithelial cell line from embryonic kidney transformed with large T antigen) whole cell lysate

Lane 3 : HeLa (Human epithelial cell line from cervix adenocarcinoma) whole cell lysate

Lane 4 : A431 (Human epidermoid carcinoma cell line) whole cell lysate

Lysates/proteins at 20 µg per lane.

Secondary

All lanes : Goat Anti-Rabbit IgG H&L (IRDye® 680RD) preadsorbed ([ab216777](#)) at 1/10000 dilution

Predicted band size: 55 kDa

Observed band size: 55 kDa

Lanes 1-4: Merged signal (red and green). Green - ab77885 observed at 55 kDa. Red - loading control [ab181602](#) observed at 36 kDa.

ab77885 Anti-FZR1 antibody [AR38.2] was shown to specifically react with FZR1 in wild-type HEK-293T cells. Loss of signal was observed when knockout cell line [ab267263](#) (knockout cell lysate [ab263208](#)) was used. Wild-type and FZR1 knockout samples were subjected to SDS-PAGE. ab77885 and Anti-GAPDH antibody[EPR16891] - Loading Control ([ab181602](#)) were incubated overnight at 4°C at 1 in 500 dilution and 1 in 20000 dilution respectively. Blots were developed with Goat anti-Rabbit IgG H&L (IRDye® 680RD) preadsorbed ([ab216777](#)) and Goat anti-Mouse IgG H&L (IRDye® 800CW) preadsorbed ([ab216772](#)) secondary antibodies at 1 in 20000 dilution for 1 hour at room temperature before imaging.

Please note: All products are "FOR RESEARCH USE ONLY. NOT FOR USE IN DIAGNOSTIC PROCEDURES"

Our Promise to you: Quality guaranteed and expert technical support

- Replacement or refund for products not performing as stated on the datasheet
- Valid for 12 months from date of delivery
- Response to your inquiry within 24 hours

- We provide support in Chinese, English, French, German, Japanese and Spanish
- Extensive multi-media technical resources to help you
- We investigate all quality concerns to ensure our products perform to the highest standards

If the product does not perform as described on this datasheet, we will offer a refund or replacement. For full details of the Abpromise, please visit <https://www.abcam.co.jp/abpromise> or contact our technical team.

Terms and conditions

- Guarantee only valid for products bought direct from Abcam or one of our authorized distributors