

Anti-Fyn antibody [EPR5500] ab125016

KO 評価済 リコンビナント RabMAb

★★★★☆ 2 Abreviews 20 References 画像数 6

製品の概要

製品名	Anti-Fyn antibody [EPR5500]
製品の詳細	Rabbit monoclonal [EPR5500] to Fyn
由来種	Rabbit
アプリケーション	適用あり: WB, ICC/IF 適用なし: IHC-P
種交差性	交差種: Mouse, Rat, Human
免疫原	Synthetic peptide within Human Fyn aa 1-100. The exact sequence is proprietary. Database link: P06241
ポジティブ・コントロール	WB: Ramos, Jurkat, HEK-293 and NIH/3T3 cell lysates. Mouse and rat brain tissue lysate. ICC/IF: Neuro-2a cells.
特記事項	This product is a recombinant monoclonal antibody, which offers several advantages including: <ul style="list-style-type: none">- High batch-to-batch consistency and reproducibility- Improved sensitivity and specificity- Long-term security of supply- Animal-free production For more information see here . Our RabMAb [®] technology is a patented hybridoma-based technology for making rabbit monoclonal antibodies. For details on our patents, please refer to RabMAb[®] patents .

製品の特性

製品の状態	Liquid
保存方法	Shipped at 4°C. Store at -20°C. Stable for 12 months at -20°C.
バッファー	pH: 7.20 Preservative: 0.01% Sodium azide Constituents: 59% PBS, 40% Glycerol, 0.05% BSA
精製度	Protein A purified
ポリ/モノ	モノクローナル
クローン名	EPR5500

アプリケーション

The Abpromise guarantee **Abpromise保証は、次のテスト済みアプリケーションにおけるab125016の使用に適用されます**
 アプリケーションノートには、推奨の開始希釈率がありますが、適切な希釈率につきましてはご検討ください。

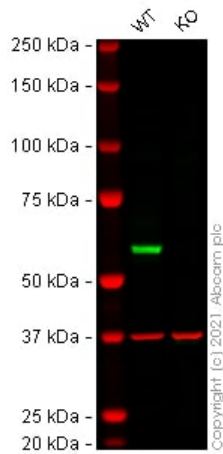
アプリケーション	Abreviews	特記事項
WB	★★★★★ (2)	1/1000. Detects a band of approximately 60 kDa (predicted molecular weight: 60 kDa).
ICC/IF		1/500.

追加情報 Is unsuitable for IHC-P.

ターゲット情報

機能	Tyrosine-protein kinase implicated in the control of cell growth. Plays a role in the regulation of intracellular calcium levels, with isoform 2 showing the greater ability to mobilize cytoplasmic calcium in comparison to isoform 1. Required in brain development and mature brain function with important roles in the regulation of axon growth, axon guidance, and neurite extension. Blocks axon outgrowth and attraction induced by NTN1 by phosphorylating its receptor DDC. Phosphorylates RUNX3.
組織特異性	Isoform 1 is highly expressed in the brain. Isoform 2 is expressed in cells of hemopoietic lineages, especially T lymphocytes.
配列類似性	Belongs to the protein kinase superfamily. Tyr protein kinase family. SRC subfamily. Contains 1 protein kinase domain. Contains 1 SH2 domain. Contains 1 SH3 domain.
細胞内局在	Cell membrane. Present and active in lipid rafts. Present in cell body and along the process of mature and developing oligodendrocytes.
製品の状態	This protein is known to be similar in amino acid sequence to HCK (P08631), LCK (P06239), YES1 (P07947), SRC (P12931), and LYN (P07948). Therefore, cross-reactivity with these homologous proteins may be observed. We would be happy to provide immunogen alignment information upon request.

画像



Western blot - Anti-Fyn antibody [EPR5500]
(ab125016)

All lanes : Anti-Fyn antibody [EPR5500] (ab125016) at 1/1000 dilution

Lane 1 : Wild-type HEK-293 cell lysate

Lane 2 : FYN knockout HEK-293 cell lysate

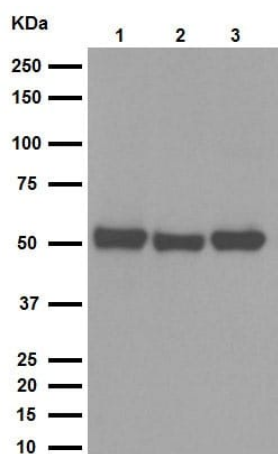
Lysates/proteins at 20 µg per lane.

Performed under reducing conditions.

Predicted band size: 60 kDa

Observed band size: 60 kDa

False colour image of Western blot: Anti-Fyn antibody [EPR5500] staining at 1/1000 dilution, shown in green; Mouse anti-GAPDH antibody [6C5] ([ab8245](#)) loading control staining at 1/20000 dilution, shown in red. In Western blot, ab125016 was shown to bind specifically to Fyn. A band was observed at 60 kDa in wild-type HEK-293 cell lysates with no signal observed at this size in FYN knockout cell line [ab269630](#) (knockout cell lysate [ab272440](#)). To generate this image, wild-type and FYN knockout HEK-293 cell lysates were analysed. First, samples were run on an SDS-PAGE gel then transferred onto a nitrocellulose membrane. Membranes were blocked in 3 % milk in TBS-0.1 % Tween[®] 20 (TBS-T) before incubation with primary antibodies overnight at 4°C. Blots were washed four times in TBS-T, incubated with secondary antibodies for 1 h at room temperature, washed again four times then imaged. Secondary antibodies used were Goat anti-Rabbit IgG H&L (IRDye[®] 800CW) preabsorbed ([ab216773](#)) and Goat anti-Mouse IgG H&L (IRDye[®] 680RD) preabsorbed ([ab216776](#)) at 1/20000 dilution.



Western blot - Anti-Fyn antibody [EPR5500] (ab125016)

All lanes : Anti-Fyn antibody [EPR5500] (ab125016) at 1/1000 dilution (purified)

Lane 1 : Jurkat (Human T cell leukemia cell line from peripheral blood) cell lysate

Lane 2 : Ramos (Human Burkitt's lymphoma cell line) cell lysate

Lane 3 : HEK-293 (Human epithelial cell line from embryonic kidney) cell lysate

Lysates/proteins at 20 µg per lane.

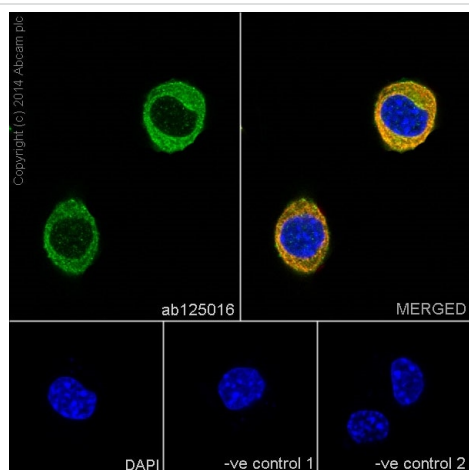
Secondary

All lanes : HRP goat anti-rabbit (H+L) at 1/1000 dilution

Predicted band size: 60 kDa

Observed band size: 60 kDa

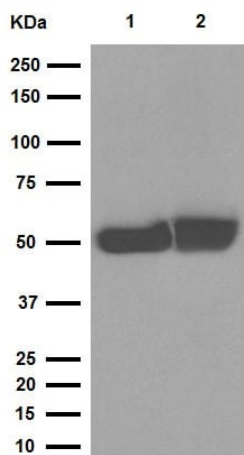
Blocking/Dilution buffer: 5% NFDM/TBST.



Immunocytochemistry/ Immunofluorescence - Anti-Fyn antibody [EPR5500] (ab125016)

Immunofluorescence staining of Neuro-2a (Mouse neuroblastoma cell line) cells with purified ab125016 at a working dilution of 1 in 500, counter-stained with DAPI. The secondary antibody was Alexa Fluor® 488 goat anti rabbit (**ab150077**), used at a dilution of 1 in 500. **ab7291** was used to stain tubulin, and this is shown in the top right hand panel. The cells were fixed in 4% PFA and permeabilized using 0.1% Triton X 100.

The negative control is shown in bottom middle and right hand panels - for the negative controls, purified ab125016 was used at a dilution of 1/200 followed by an Alexa Fluor® 594 goat anti-mouse antibody at a dilution of 1/500.



Western blot - Anti-Fyn antibody [EPR5500] (ab125016)

All lanes : Anti-Fyn antibody [EPR5500] (ab125016) at 1/5000 dilution (purified)

Lane 1 : Mouse brain tissue lysate

Lane 2 : Rat brain tissue lysate

Lysates/proteins at 20 µg per lane.

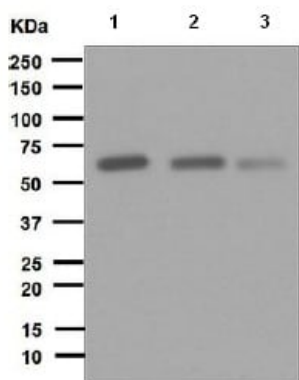
Secondary

All lanes : HRP goat anti-rabbit (H+L) at 1/1000 dilution

Predicted band size: 60 kDa

Observed band size: 60 kDa

Blocking/Dilution buffer: 5% NFDm/TBST.



Western blot - Anti-Fyn antibody [EPR5500] (ab125016)

All lanes : Anti-Fyn antibody [EPR5500] (ab125016) at 1/1000 dilution (unpurified)

Lane 1 : Ramos (Human Burkitt's lymphoma cell line) lysate

Lane 2 : Jurkat (Human T cell leukemia cell line from peripheral blood) lysate

Lane 3 : NIH/3T3 (Mouse embryo fibroblast cell line) lysate

Lysates/proteins at 10 µg per lane.

Secondary

All lanes : Goat anti-Rabbit HRP at 1/2000 dilution

Predicted band size: 60 kDa

Observed band size: 59 kDa

Why choose a recombinant antibody?

Research with confidence
Consistent and reproducible results

Long-term and scalable supply
Recombinant technology

Success from the first experiment
Confirmed specificity

Ethical standards compliant
Animal-free production

Anti-Fyn antibody [EPR5500] (ab125016)

Please note: All products are "FOR RESEARCH USE ONLY. NOT FOR USE IN DIAGNOSTIC PROCEDURES"

Our Abpromise to you: Quality guaranteed and expert technical support

- Replacement or refund for products not performing as stated on the datasheet
- Valid for 12 months from date of delivery
- Response to your inquiry within 24 hours
- We provide support in Chinese, English, French, German, Japanese and Spanish
- Extensive multi-media technical resources to help you
- We investigate all quality concerns to ensure our products perform to the highest standards

If the product does not perform as described on this datasheet, we will offer a refund or replacement. For full details of the Abpromise, please visit <https://www.abcam.co.jp/abpromise> or contact our technical team.

Terms and conditions

- Guarantee only valid for products bought direct from Abcam or one of our authorized distributors