

# Anti-Fyn antibody [2A10] ab119855

**1 References** [画像数 6](#)

### 製品の概要

製品名	Anti-Fyn antibody [2A10]
製品の詳細	Mouse monoclonal [2A10] to Fyn
由来種	Mouse
アプリケーション	<b>適用あり:</b> WB, ELISA, IHC-P, Flow Cyt, ICC/IF
種交差性	<b>交差種:</b> Human, Recombinant fragment
免疫原	Purified recombinant fragment of Human Fyn, expressed in E. coli.
ポジティブ・コントロール	IHC-P: Human breast cancer and brain tissues ICC/IF: U251 cells Flow Cyt: Hela cells
特記事項	<p>The Life Science industry has been in the grips of a reproducibility crisis for a number of years. Abcam is leading the way in addressing this with our range of recombinant monoclonal antibodies and knockout edited cell lines for gold-standard validation. Please check that this product meets your needs before purchasing.</p> <p>If you have any questions, special requirements or concerns, please send us an inquiry and/or contact our Support team ahead of purchase. Recommended alternatives for this product can be found below, along with publications, customer reviews and Q&amp;As</p>

### 製品の特性

製品の状態	Liquid
保存方法	Shipped at 4°C. Upon delivery aliquot and store at -20°C. Avoid repeated freeze / thaw cycles.
バッファー	Preservative: 0.05% Sodium azide Constituent: PBS
精製度	Protein G purified
特記事項(精製)	Purified from tissue culture supernatant.
ポリ/モノ	モノクローナル
クローン名	2A10
アイソタイプ	IgG1

### アプリケーション

## The Abpromise guarantee

**Abpromise保証は、次のテスト済みアプリケーションにおけるab119855の使用に適用されます**

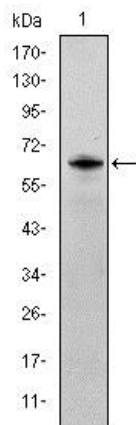
アプリケーションノートには、推奨の開始希釈率がありますが、適切な希釈率につきましてはご検討ください。

アプリケーション	Abreviews	特記事項
WB		1/500 - 1/2000. Predicted molecular weight: 61 kDa.
ELISA		1/10000.
IHC-P		1/200 - 1/1000.
Flow Cyt		1/200 - 1/400. <b>ab170190</b> - Mouse monoclonal IgG1, is suitable for use as an isotype control with this antibody.
ICC/IF		1/200 - 1/1000.

## ターゲット情報

機能	Tyrosine-protein kinase implicated in the control of cell growth. Plays a role in the regulation of intracellular calcium levels, with isoform 2 showing the greater ability to mobilize cytoplasmic calcium in comparison to isoform 1. Required in brain development and mature brain function with important roles in the regulation of axon growth, axon guidance, and neurite extension. Blocks axon outgrowth and attraction induced by NTN1 by phosphorylating its receptor DDC. Phosphorylates RUNX3.
組織特異性	Isoform 1 is highly expressed in the brain. Isoform 2 is expressed in cells of hemopoietic lineages, especially T lymphocytes.
配列類似性	Belongs to the protein kinase superfamily. Tyr protein kinase family. SRC subfamily. Contains 1 protein kinase domain. Contains 1 SH2 domain. Contains 1 SH3 domain.
細胞内局在	Cell membrane. Present and active in lipid rafts. Present in cell body and along the process of mature and developing oligodendrocytes.
製品の状態	This protein is known to be similar in amino acid sequence to HCK (P08631), LCK (P06239), YES1 (P07947), SRC (P12931), and LYN (P07948). Therefore, cross-reactivity with these homologous proteins may be observed. We would be happy to provide immunogen alignment information upon request.

## 画像

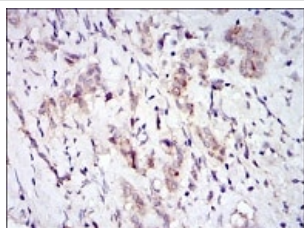


Western blot - Anti-Fyn antibody [2A10] (ab119855)

Anti-Fyn antibody [2A10] (ab119855) at 1/500 dilution + Fyn recombinant protein (7-176 amino acids)

**Predicted band size:** 61 kDa

**Predicted MW of Recombinant Fragment :** 44.3 kDa



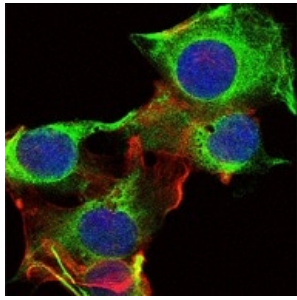
Immunohistochemistry (Formalin/PFA-fixed paraffin-embedded sections) - Anti-Fyn antibody [2A10] (ab119855)

ab119855, at a 1/200 dilution, staining Fyn in paraffin embedded Human breast cancer tissue by Immunohistochemistry, with DAB staining.



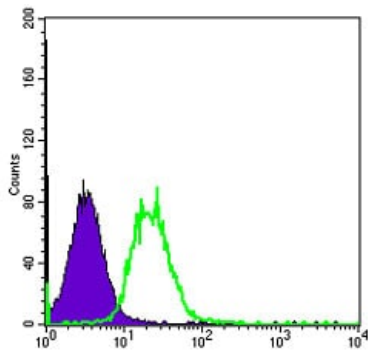
Immunohistochemistry (Formalin/PFA-fixed paraffin-embedded sections) - Anti-Fyn antibody [2A10] (ab119855)

ab119855, at a 1/200 dilution, staining Fyn in paraffin embedded Human brain tissue by Immunohistochemistry, with DAB staining.



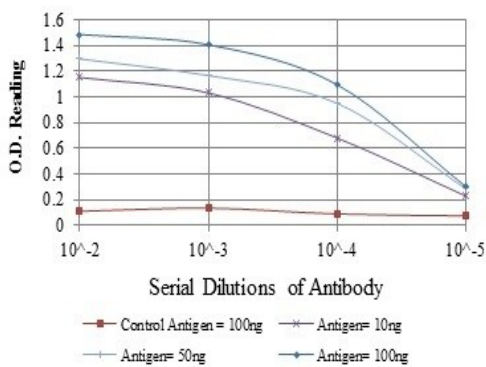
Immunofluorescence analysis of U251 cells, using ab119855 at a 1/200 dilution (green). Blue: DRAQ5 fluorescent DNA dye. Red: Actin filaments have been labeled with Alexa Fluor-555 phalloidin.

Immunocytochemistry/ Immunofluorescence - Anti-Fyn antibody [2A10] (ab119855)



Flow Cytometric analysis of HeLa cells, using ab119855 at a 1/200 dilution (green) and negative control (purple).

Flow Cytometry - Anti-Fyn antibody [2A10] (ab119855)



Elisa results for ab119855

ELISA - Anti-Fyn antibody [2A10] (ab119855)

**Please note:** All products are "FOR RESEARCH USE ONLY. NOT FOR USE IN DIAGNOSTIC PROCEDURES"

### Our Abpromise to you: Quality guaranteed and expert technical support

- Replacement or refund for products not performing as stated on the datasheet
- Valid for 12 months from date of delivery
- Response to your inquiry within 24 hours
- We provide support in Chinese, English, French, German, Japanese and Spanish

- Extensive multi-media technical resources to help you
- We investigate all quality concerns to ensure our products perform to the highest standards

If the product does not perform as described on this datasheet, we will offer a refund or replacement. For full details of the Abpromise, please visit <https://www.abcam.co.jp/abpromise> or contact our technical team.

#### **Terms and conditions**

---

- Guarantee only valid for products bought direct from Abcam or one of our authorized distributors