

Anti-FXI antibody ab97346

面格粉 1

医薬用外劇物

製品の概要

製品名	Anti-FXI antibody
製品の詳細	Rabbit polyclonal to FXI
由来種	Rabbit
アプリケーション	適用あり: WB
種交差性	交差種: Human
免疫原	Recombinant fragment corresponding to Human FXI aa 21-282. Database link: NP_000119
ポジティブ・コントロール	293T whole cell lysate and Raji lysate.
特記事項	<p>The Life Science industry has been in the grips of a reproducibility crisis for a number of years. Abcam is leading the way in addressing this with our range of recombinant monoclonal antibodies and knockout edited cell lines for gold-standard validation. Please check that this product meets your needs before purchasing.</p> <p>If you have any questions, special requirements or concerns, please send us an inquiry and/or contact our Support team ahead of purchase. Recommended alternatives for this product can be found below, along with publications, customer reviews and Q&As</p>

製品の特性

製品の状態	Liquid
保存方法	Shipped at 4°C. Upon delivery aliquot. Store at -20°C or -80°C. Avoid freeze / thaw cycle.
バッファー	pH: 7.00 Preservative: 0.01% Thimerosal (merthiolate) Constituents: 78.99% PBS, 1% BSA, 20% Glycerol (glycerin, glycerine)
精製度	Immunogen affinity purified
ポリ/モノ	ポリクローナル
アイソタイプ	IgG

アプリケーション

The Abpromise guarantee

Abpromise保証は、次のテスト済みアプリケーションにおけるab97346の使用に適用されます

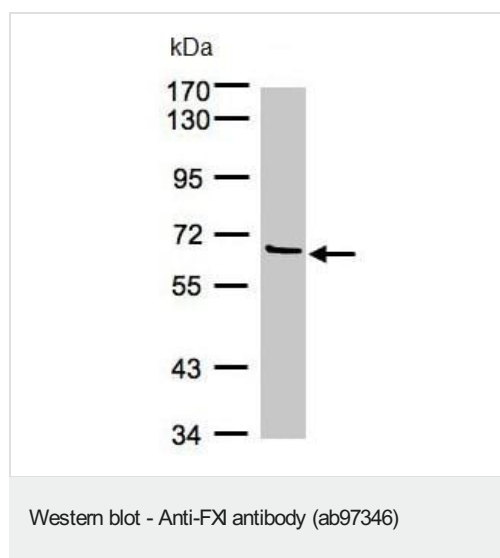
アプリケーションノートには、推奨の開始希釈率がありますが、適切な希釈率につきましてはご検討ください。

アプリケーション	Abreviews	特記事項
WB		1/500 - 1/3000. Predicted molecular weight: 70 kDa.

ターゲット情報

機能	Factor XI triggers the middle phase of the intrinsic pathway of blood coagulation by activating factor IX.
組織特異性	Isoform 2 is produced by platelets and megakaryocytes but absent from other blood cells.
関連疾患	Defects in F11 are the cause of factor XI deficiency (FA11D) [MIM:612416]; also known as plasma thromboplastin antecedent deficiency or Rosenthal syndrome. It is a hemorrhagic disease characterized by reduced levels and activity of factor XI resulting in moderate bleeding symptoms, usually occurring after trauma or surgery. Patients usually do not present spontaneous bleeding but women can present with menorrhagia. Hemorrhages are usually moderate.
配列類似性	Belongs to the peptidase S1 family. Plasma kallikrein subfamily. Contains 4 apple domains. Contains 1 peptidase S1 domain.
翻訳後修飾	Activated by factor XIIa (or XII), which cleaves each polypeptide after Arg-387 into the light chain, which contains the active site, and the heavy chain, which associates with high molecular weight (HMW) kininogen.
細胞内局在	Secreted.

画像



Anti-FXI antibody (ab97346) at 1/1000 dilution + 293T whole cell lysate at 30 µg

Predicted band size: 70 kDa

7.5% SDS PAGE

Please note: All products are "FOR RESEARCH USE ONLY. NOT FOR USE IN DIAGNOSTIC PROCEDURES"

Our Abpromise to you: Quality guaranteed and expert technical support

- Replacement or refund for products not performing as stated on the datasheet
- Valid for 12 months from date of delivery
- Response to your inquiry within 24 hours

- We provide support in Chinese, English, French, German, Japanese and Spanish
- Extensive multi-media technical resources to help you
- We investigate all quality concerns to ensure our products perform to the highest standards

If the product does not perform as described on this datasheet, we will offer a refund or replacement. For full details of the Abpromise, please visit <https://www.abcam.co.jp/abpromise> or contact our technical team.

Terms and conditions

- Guarantee only valid for products bought direct from Abcam or one of our authorized distributors