

Anti-FRMPD4 antibody ab113420

画像数 2

製品の概要

製品名	Anti-FRMPD4 antibody
製品の詳細	Rabbit polyclonal to FRMPD4
由来種	Rabbit
アプリケーション	適用あり: WB, IHC-P
種交差性	交差種: Human
免疫原	Synthetic peptide conjugated to KLH, corresponding to internal sequence amino acids of Human FRMPD4.
ポジティブ・コントロール	Human Kidney tissue; SK N SH cell lysate.
特記事項	<p>The Life Science industry has been in the grips of a reproducibility crisis for a number of years. Abcam is leading the way in addressing this with our range of recombinant monoclonal antibodies and knockout edited cell lines for gold-standard validation. Please check that this product meets your needs before purchasing.</p> <p>If you have any questions, special requirements or concerns, please send us an inquiry and/or contact our Support team ahead of purchase. Recommended alternatives for this product can be found below, along with publications, customer reviews and Q&As</p>

製品の特性

製品の状態	Liquid
保存方法	Shipped at 4°C. Store at +4°C short term (1-2 weeks). Store at -20°C or -80°C. Avoid freeze / thaw cycle.
バッファー	<p>pH: 7.4</p> <p>Preservative: 0.02% Sodium azide</p> <p>Constituent: 99% PBS</p>
精製度	Protein A purified
ポリ/モノ	ポリクローナル
アイソタイプ	IgG

アプリケーション

The Abpromise guarantee

Abpromise保証は、次のテスト済みアプリケーションにおけるab113420の使用に適用されます

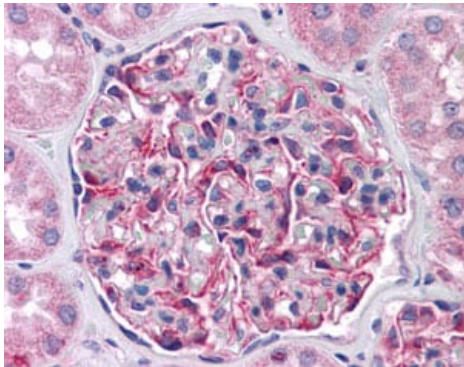
アプリケーションノートには、推奨の開始希釈率がありますが、適切な希釈率につきましてはご検討ください。

アプリケーション	Abreviews	特記事項
WB		Use a concentration of 1 - 2 µg/ml. Predicted molecular weight: 144 kDa.
IHC-P		Use a concentration of 5 µg/ml.

ターゲット情報

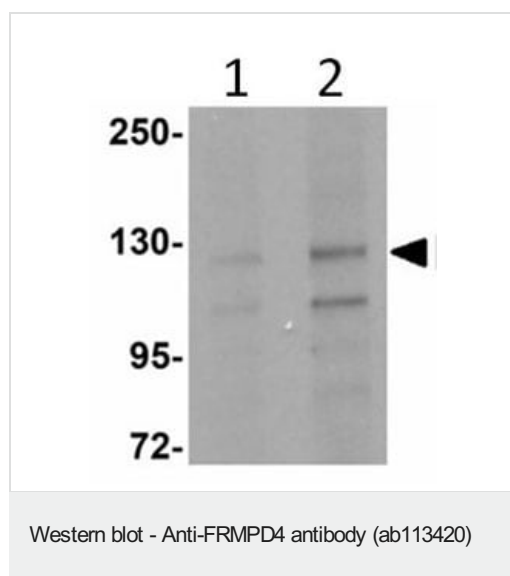
機能	Positive regulator of dendritic spine morphogenesis and density. Required for the maintenance of excitatory synaptic transmission. Binds phosphatidylinositol-4,5-bisphosphate.
配列類似性	Contains 1 FERM domain. Contains 1 PDZ (DHR) domain. Contains 1 WW domain.
ドメイン	The FERM domain mediates the interaction with phosphatidylinositol-4,5-bisphosphate.
細胞内局在	Cell projection > dendritic spine.

画像



ab113420 at 5 µg/ml staining FRMPD4 in Human kidney by Immunohistochemistry Formalin-fixed, Paraffin-embedded tissue.

Immunohistochemistry (Formalin/PFA-fixed paraffin-embedded sections) - Anti-FRMPD4 antibody (ab113420)



Lane 1 : Anti-FRMPD4 antibody (ab113420) at 1 µg/ml

Lane 2 : Anti-FRMPD4 antibody (ab113420) at 2 µg/ml

All lanes : SK N SH cell lysate

Predicted band size: 144 kDa

Please note: All products are "FOR RESEARCH USE ONLY. NOT FOR USE IN DIAGNOSTIC PROCEDURES"

Our Abpromise to you: Quality guaranteed and expert technical support

- Replacement or refund for products not performing as stated on the datasheet
- Valid for 12 months from date of delivery
- Response to your inquiry within 24 hours
- We provide support in Chinese, English, French, German, Japanese and Spanish
- Extensive multi-media technical resources to help you
- We investigate all quality concerns to ensure our products perform to the highest standards

If the product does not perform as described on this datasheet, we will offer a refund or replacement. For full details of the Abpromise, please visit <https://www.abcam.co.jp/abpromise> or contact our technical team.

Terms and conditions

- Guarantee only valid for products bought direct from Abcam or one of our authorized distributors