


Anti-FREM1 antibody ab117566

画像数 1

製品の概要

製品名	Anti-FREM1 antibody
製品の詳細	Rabbit polyclonal to FREM1
由来種	Rabbit
アプリケーション	適用あり: IHC-P
種交差性	交差種: Human 交差が予測される動物種: Mouse 
免疫原	Synthetic peptide corresponding to Human FREM1 (C terminal) conjugated to keyhole limpet haemocyanin. KLH. A 15 AA synthetic peptide. The immunogen is located within the last 50 AA of FREM1.
ポジティブ・コントロール	Human tonsil tissue.
特記事項	<p>Based on the location of the immunogen the antibody can detect FREM 1 isoform 1 and isoform 2 (also known as TILRR).</p> <p>The Life Science industry has been in the grips of a reproducibility crisis for a number of years. Abcam is leading the way in addressing this with our range of recombinant monoclonal antibodies and knockout edited cell lines for gold-standard validation. Please check that this product meets your needs before purchasing.</p> <p>If you have any questions, special requirements or concerns, please send us an inquiry and/or contact our Support team ahead of purchase. Recommended alternatives for this product can be found below, along with publications, customer reviews and Q&As</p>

製品の特性

製品の状態	Liquid
保存方法	Shipped at 4°C. Store at 4°C (stable for up to 12 months). Store at -20°C or -80°C. Avoid freeze / thaw cycle.
バッファー	pH: 7.4 Preservative: 0.02% Sodium azide Constituent: 99% PBS
精製度	Protein A purified
ポリ/モノ	ポリクローナル

アプリケーション

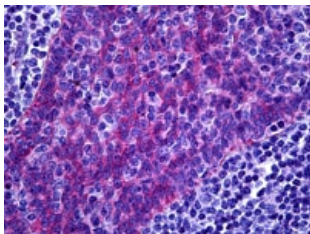
The Abpromise guarantee Abpromise保証は、 次のテスト済みアプリケーションにおけるab117566の使用に適用されます
アプリケーションノートには、推奨の開始希釈率がありますが、適切な希釈率につきましてはご検討ください。

アプリケーション	Abreviews	特記事項
IHC-P		Use a concentration of 10 µg/ml.

ターゲット情報

機能	Extracellular matrix protein that plays a role in epidermal differentiation and is required for epidermal adhesion during embryonic development.
関連疾患	Defects in FREM1 are the cause of bifid nose with or without anorectal and renal anomalies (BNAR) [MIM:608980]. A bifid nose is a rare congenital deformity due to failure of the paired nasal processes to fuse to a single midline organ during early gestation. BNAR is an autosomal recessive disorder and patients usually present a bifid nose associated with renal and anorectal malformations.
配列類似性	Belongs to the FRAS1 family. Contains 1 C-type lectin domain. Contains 1 Calx-beta domain. Contains 12 CSPG (NG2) repeats.
ドメイン	The Calx-beta domain binds calcium with high affinity and undergo a major conformational shift upon binding.
細胞内局在	Secreted > extracellular space > extracellular matrix > basement membrane. Localizes at the basement membrane zone of embryonic epidermis and hair follicles.

画像



ab117566, at 10 µg/ml, staining FREM1 in formalin fixed, paraffin embedded Human tonsil tissue by Immunohistochemistry.

Immunohistochemistry (Formalin/PFA-fixed paraffin-embedded sections) - Anti-FREM1 antibody (ab117566)

Please note: All products are "FOR RESEARCH USE ONLY. NOT FOR USE IN DIAGNOSTIC PROCEDURES"

Our Abpromise to you: Quality guaranteed and expert technical support

- Replacement or refund for products not performing as stated on the datasheet
- Valid for 12 months from date of delivery
- Response to your inquiry within 24 hours
- We provide support in Chinese, English, French, German, Japanese and Spanish
- Extensive multi-media technical resources to help you
- We investigate all quality concerns to ensure our products perform to the highest standards

If the product does not perform as described on this datasheet, we will offer a refund or replacement. For full details of the Abpromise, please visit <https://www.abcam.co.jp/abpromise> or contact our technical team.

Terms and conditions

- Guarantee only valid for products bought direct from Abcam or one of our authorized distributors