

Anti-FPR1 antibody ab113531

★★★★★ [2 Abreviews](#) [13 References](#) [画像数 3](#)

製品の概要

製品名	Anti-FPR1 antibody
製品の詳細	Rabbit polyclonal to FPR1
由来種	Rabbit
アプリケーション	適用あり: WB, IHC-P, ICC/IF
種交差性	交差種: Human
免疫原	Synthetic peptide conjugated to KLH, from an internal region of Human FPR1.
ポジティブ・コントロール	Human spleen tissue; K562 cell extracts; MCF7 cells.
特記事項	<p>The Life Science industry has been in the grips of a reproducibility crisis for a number of years. Abcam is leading the way in addressing this with our range of recombinant monoclonal antibodies and knockout edited cell lines for gold-standard validation. Please check that this product meets your needs before purchasing.</p> <p>If you have any questions, special requirements or concerns, please send us an inquiry and/or contact our Support team ahead of purchase. Recommended alternatives for this product can be found below, along with publications, customer reviews and Q&As</p>

製品の特性

製品の状態	Liquid
保存方法	Shipped at 4°C. Store at -20°C. Stable for 12 months at -20°C.
バッファー	<p>pH: 7.40</p> <p>Preservative: 0.02% Sodium azide</p> <p>Constituents: 50% Glycerol (glycerin, glycerine), 0.88% Sodium chloride, 49.1% PBS</p> <p>PBS without Mg²⁺, Ca²⁺</p>
精製度	Protein A purified
ポリ/モノ	ポリクローナル
アイソタイプ	IgG

アプリケーション

The Abpromise guarantee

Abpromise保証は、次のテスト済みアプリケーションにおけるab113531の使用に適用されます

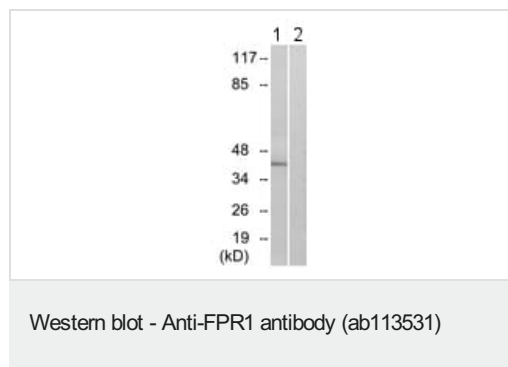
アプリケーションノートには、推奨の開始希釈率がありますが、適切な希釈率につきましてはご検討ください。

アプリケーション	Abreviews	特記事項
WB		1/500 - 1/1000. Predicted molecular weight: 38 kDa.
IHC-P		Use a concentration of 5 µg/ml.
ICC/IF	★★★★★ (1)	1/100 - 1/500.

ターゲット情報

機能	High affinity receptor for N-formyl-methionyl peptides, which are powerful neutrophils chemotactic factors. Binding of FMLP to the receptor causes activation of neutrophils. This response is mediated via a G-protein that activates a phosphatidylinositol-calcium second messenger system.
組織特異性	Neutrophils.
配列類似性	Belongs to the G-protein coupled receptor 1 family.
翻訳後修飾	Phosphorylated; which is necessary for desensitization.
細胞内局在	Cell membrane.

画像

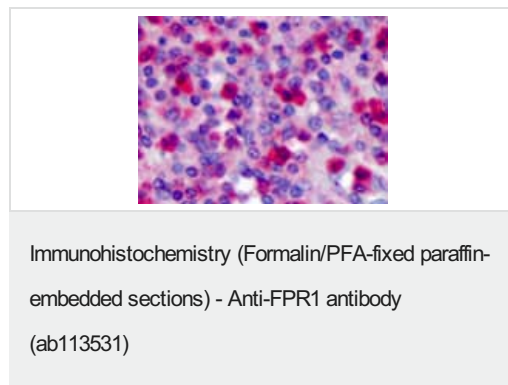


All lanes : Anti-FPR1 antibody (ab113531) at 1/500 dilution

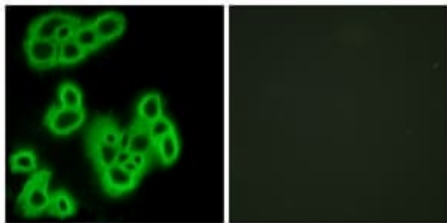
Lane 1 : K562 cell extract

Lane 2 : K562 cell extract with immunizing peptide

Predicted band size: 38 kDa



ab113531 at 5ug/ml staining FPR1 in Formalin-Fixed, Paraffin-Embedded Human spleen tissue by Immunohistochemistry.



Immunocytochemistry/ Immunofluorescence - Anti-FPR1 antibody (ab113531)

ab113531 at a 1/100 dilution staining FPR1 in Human MCF7 cells by Immunofluorescence. The cells on the right were incubated with the immunizing peptide.

Please note: All products are "FOR RESEARCH USE ONLY. NOT FOR USE IN DIAGNOSTIC PROCEDURES"

Our Abpromise to you: Quality guaranteed and expert technical support

- Replacement or refund for products not performing as stated on the datasheet
- Valid for 12 months from date of delivery
- Response to your inquiry within 24 hours
- We provide support in Chinese, English, French, German, Japanese and Spanish
- Extensive multi-media technical resources to help you
- We investigate all quality concerns to ensure our products perform to the highest standards

If the product does not perform as described on this datasheet, we will offer a refund or replacement. For full details of the Abpromise, please visit <https://www.abcam.co.jp/abpromise> or contact our technical team.

Terms and conditions

- Guarantee only valid for products bought direct from Abcam or one of our authorized distributors