


Anti-FOXP3 antibody [mAbcam 22510] ab22510

★★★★★ **8 Abreviews** **112 References** 画像数 6

製品の概要

製品名	Anti-FOXP3 antibody [mAbcam 22510]
製品の詳細	Mouse monoclonal [mAbcam 22510] to FOXP3
由来種	Mouse
特異性	This product detects an epitope near the C-terminus of the FOXP3 protein and is expected to detect full length FOXP3. It is not expected to detect the cleaved forms of FOXP3.
アプリケーション	適用あり: IHC-Fr, IHC-P, WB 適用なし: Flow Cyt
種交差性	交差種: Human 交差が予測される動物種: Rat 
免疫原	Synthetic peptide. This information is proprietary to Abcam and/or its suppliers.
ポジティブ・コントロール	IHC-P: Human tonsil and spleen tissue. Human colon carcinoma tissue. IHC-Fr: Human tonsil tissue. WB: HEK293 cells overexpressing human FOXP3.
特記事項	<p>This antibody clone is manufactured by Abcam. If you require a custom buffer formulation or conjugation for your experiments, please contact orders@abcam.com.</p> <p>The Life Science industry has been in the grips of a reproducibility crisis for a number of years. Abcam is leading the way in addressing this with our range of recombinant monoclonal antibodies and knockout edited cell lines for gold-standard validation. Please check that this product meets your needs before purchasing.</p> <p>If you have any questions, special requirements or concerns, please send us an inquiry and/or contact our Support team ahead of purchase. Recommended alternatives for this product can be found below, along with publications, customer reviews and Q&As</p>

製品の特性

製品の状態	Liquid
保存方法	Shipped at 4°C. Store at +4°C short term (1-2 weeks). Upon delivery aliquot. Store at -20°C or -80°C. Avoid freeze / thaw cycle.
バッファー	Preservative: 0.02% Sodium azide Constituents: PBS, 6.97% L-Arginine

Please note that some batches of ab22510 may contain 0.4M arginine. Please contact Scientific

	Support for further information.
精製度	IgG fraction
ポリ/モノ	モノクローナル
クローン名	mAbcam 22510
アイソタイプ	IgG1
軽鎖の種類	kappa

アプリケーション

The Abpromise guarantee Abpromise保証は、次のテスト済みアプリケーションにおけるab22510の使用に適用されます
 アプリケーションノートには、推奨の開始希釈率がありますが、適切な希釈率につきましてはご検討ください。

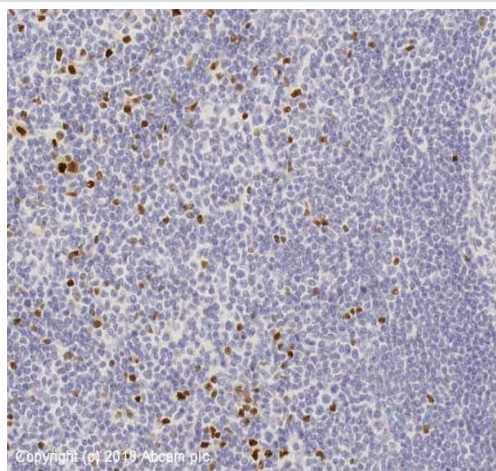
アプリケーション	Abreviews	特記事項
IHC-Fr		Use a concentration of 10 µg/ml.
IHC-P	★★★★★ (5)	Use a concentration of 10 µg/ml. Perform heat mediated antigen retrieval with Tris/EDTA buffer pH 9.0 before commencing with IHC staining protocol.
WB	★★★★★ (1)	Use a concentration of 1 µg/ml. Detects a band of approximately 48 kDa (predicted molecular weight: 48 kDa).

追加情報 Is unsuitable for Flow Cyt.

ターゲット情報

機能	Probable transcription factor. Plays a critical role in the control of immune response.
関連疾患	Defects in FOXP3 are the cause of immunodeficiency polyendocrinopathy, enteropathy, X-linked syndrome (IPEX) [MIM:304790]; also known as X-linked autoimmunity-immunodeficiency syndrome. IPEX is characterized by neonatal onset insulin-dependent diabetes mellitus, infections, secretory diarrhea, thrombocytopenia, anemia and eczema. It is usually lethal in infancy.
配列類似性	Contains 1 C2H2-type zinc finger. Contains 1 fork-head DNA-binding domain.
細胞内局在	Nucleus.

画像

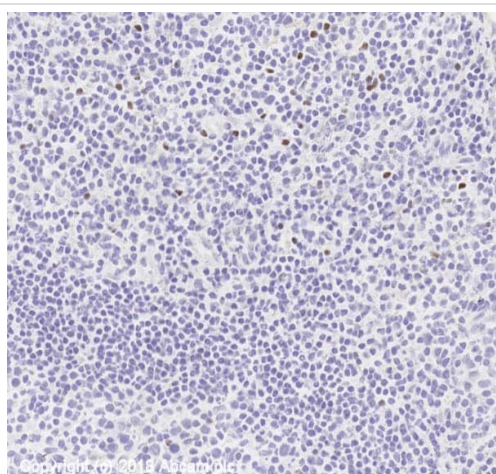


Immunohistochemistry (Formalin/PFA-fixed paraffin-embedded sections) - Anti-FOXP3 antibody
[mAbcam 22510] (ab22510)

IHC image of FOXP3 staining in a section of formalin-fixed paraffin-embedded normal human tonsil* performed on a Leica BOND™ system using the standard protocol F. The section was pre-treated using heat mediated antigen retrieval with EDTA buffer (pH9, epitope retrieval solution 2) for 20mins. The section was then incubated with ab22510, 10ug/ml, for 15 mins at room temperature and detected using an HRP conjugated compact polymer system. DAB was used as the chromogen. The section was then counterstained with haematoxylin and mounted with DPX.

For other IHC staining systems (automated and non-automated) customers should optimize variable parameters such as antigen retrieval conditions, primary antibody concentration and antibody incubation times.

**Tissue obtained from the Human Research Tissue Bank, supported by the NIHR Cambridge Biomedical Research Centre*

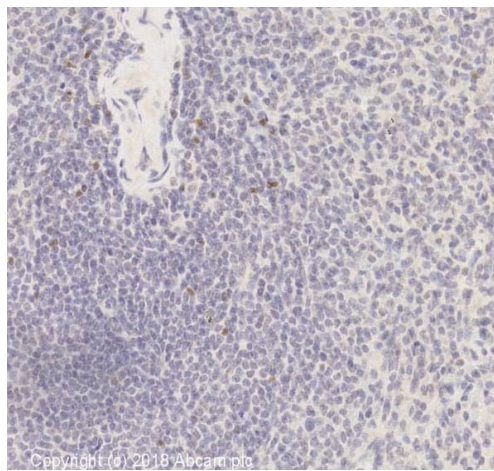


Immunohistochemistry (Frozen sections) - Anti-FOXP3 antibody [mAbcam 22510] (ab22510)

IHC image of FOXP3 staining in a section of formalin-fixed frozen normal human tonsil* performed on a Leica BOND™ system using the standard protocol F. The section was then incubated with ab22510, 10ug/ml, for 15 mins at room temperature and detected using an HRP conjugated compact polymer system. DAB was used as the chromogen. The section was then counterstained with haematoxylin and mounted with DPX.

For other IHC staining systems (automated and non-automated) customers should optimize variable parameters such as antigen retrieval conditions, primary antibody concentration and antibody incubation times.

**Tissue obtained from the Human Research Tissue Bank, supported by the NIHR Cambridge Biomedical Research Centre*

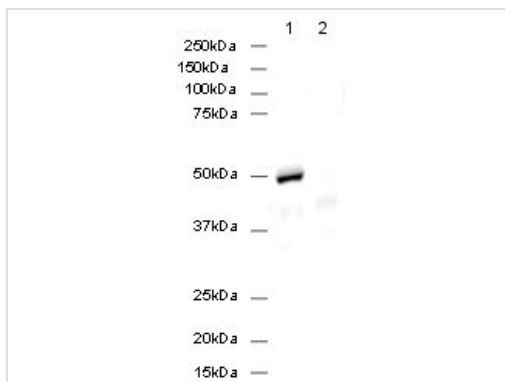


Immunohistochemistry (Formalin/PFA-fixed paraffin-embedded sections) - Anti-FOXP3 antibody [mAbcam 22510] (ab22510)

IHC image of FOXP3 staining in a section of formalin-fixed paraffin-embedded normal human spleen* performed on a Leica BOND™ system using the standard protocol F. The section was pre-treated using heat mediated antigen retrieval with EDTA buffer (pH9, epitope retrieval solution 2) for 20mins. The section was then incubated with ab22510, 10ug/ml, for 15 mins at room temperature and detected using an HRP conjugated compact polymer system. DAB was used as the chromogen. The section was then counterstained with haematoxylin and mounted with DPX.

For other IHC staining systems (automated and non-automated) customers should optimize variable parameters such as antigen retrieval conditions, primary antibody concentration and antibody incubation times.

**Tissue obtained from the Human Research Tissue Bank, supported by the NIHR Cambridge Biomedical Research Centre*



Western blot - Anti-FOXP3 antibody [mAbcam 22510] (ab22510)

All lanes : Anti-FOXP3 antibody [mAbcam 22510] (ab22510) at 1 µg/ml

Lane 1 : HEK293 cells overexpressing human FOXP3

Lane 2 : HEK293 cells overexpressing human FOXP3 with Human FOXP3 peptide ([ab16809](#)) at 1 µg/ml

Lysates/proteins at 20 µg per lane.

Secondary

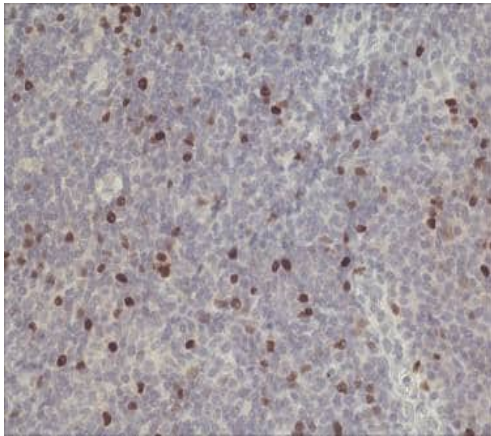
All lanes : Rabbit Anti-Mouse IgG H&L (HRP) ([ab6728](#)) at 1/5000 dilution

Performed under reducing conditions.

Predicted band size: 48 kDa

Observed band size: 50 kDa

Exposure time: 45 seconds



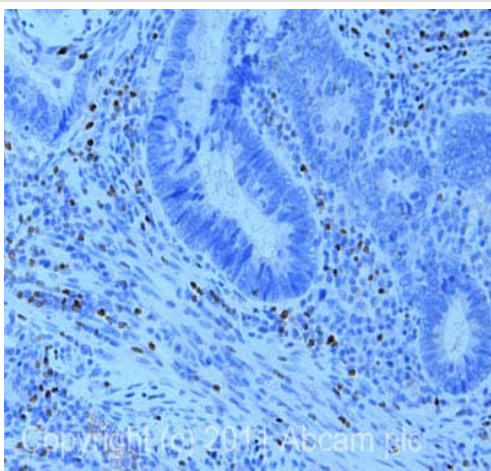
Immunohistochemistry (Formalin/PFA-fixed paraffin-embedded sections) - Anti-FOXP3 antibody

[mAbcam 22510] (ab22510)

This image is courtesy of Alison Banham and Bridget Fox, University of Oxford

Clone mAbcam 22510 used to stain formalin-fixed paraffin-embedded sections of human tonsil. Antigens were heat retrieved with pH9 Tris-EDTA buffer.

These images were produced with neat supernatant produced with this clone (the stock of this antibody is purified from supernatant).



Immunohistochemistry (Formalin/PFA-fixed paraffin-embedded sections) - Anti-FOXP3 antibody

[mAbcam 22510] (ab22510)

IHC image of ab22510 staining in human colon carcinoma formalin fixed paraffin embedded tissue section, performed on a Leica Bond™ system using the standard protocol F. The section was pre-treated using heat mediated antigen retrieval with sodium citrate buffer (pH6, epitope retrieval solution 1) for 20 mins. The section was then incubated with ab22510, 20µg/ml, for 15 mins at room temperature and detected using an HRP conjugated compact polymer system. DAB was used as the chromogen. The section was then counterstained with haematoxylin and mounted with DPX.

For other IHC staining systems (automated and non-automated) customers should optimize variable parameters such as antigen retrieval conditions, primary antibody concentration and antibody incubation times.

Please note: All products are "FOR RESEARCH USE ONLY. NOT FOR USE IN DIAGNOSTIC PROCEDURES"

Our Abpromise to you: Quality guaranteed and expert technical support

- Replacement or refund for products not performing as stated on the datasheet
- Valid for 12 months from date of delivery
- Response to your inquiry within 24 hours
- We provide support in Chinese, English, French, German, Japanese and Spanish
- Extensive multi-media technical resources to help you

- We investigate all quality concerns to ensure our products perform to the highest standards

If the product does not perform as described on this datasheet, we will offer a refund or replacement. For full details of the Abpromise, please visit <https://www.abcam.co.jp/abpromise> or contact our technical team.

Terms and conditions

- Guarantee only valid for products bought direct from Abcam or one of our authorized distributors