

Anti-FOXO1A (phospho S256) antibody ab131339

★★★★★ [5 Abreviews](#) [35 References](#) [画像数 4](#)

製品の概要

製品名	Anti-FOXO1A (phospho S256) antibody
製品の詳細	Rabbit polyclonal to FOXO1A (phospho S256)
由来種	Rabbit
アプリケーション	適用あり: WB, IHC-P, ICC/IF
種交差性	交差種: Human
免疫原	Synthetic peptide corresponding to Human FOXO1A conjugated to keyhole limpet haemocyanin. Synthetic peptide corresponding to the sequence around phosphorylation site of serine 256 (A-A-S(p)-M-D) of Human FOXO1A (NP_002006.2). Sequence: A-A-S(p)-M-D

Database link: [Q12778](#)

 [Run BLAST with](#)

 [Run BLAST with](#)

ポジティブ・コントロール MCF7 cells, 293 cell extracts, Human breast carcinoma tissue

特記事項 The Life Science industry has been in the grips of a reproducibility crisis for a number of years. Abcam is leading the way in addressing this with our range of recombinant monoclonal antibodies and knockout edited cell lines for gold-standard validation. Please check that this product meets your needs before purchasing.

If you have any questions, special requirements or concerns, please send us an inquiry and/or contact our Support team ahead of purchase. Recommended alternatives for this product can be found below, along with publications, customer reviews and Q&As

製品の特性

製品の状態	Liquid
保存方法	Shipped at 4°C. Store at -20°C. Stable for 12 months at -20°C.
バッファー	pH: 7.40 Preservative: 0.02% Sodium azide Constituents: 50% Glycerol, 0.88% Sodium chloride, 49% PBS

	PBS without Mg ²⁺ and Ca ²⁺
精製度	Immunogen affinity purified
特記事項(精製)	ab131339 is purified by affinity-chromatography using an epitope-specific phosphopeptide. Non-phospho specific antibodies are removed by chromatography using a non-phosphopeptide.
ポリクローナル	ポリクローナル
アイソタイプ	IgG

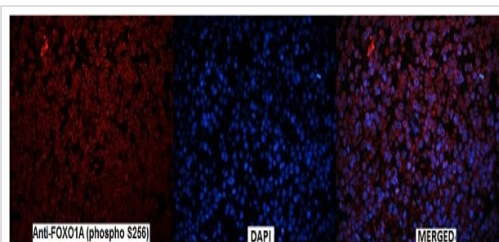
アプリケーション

The Abpromise guarantee **Abpromise保証は、次のテスト済みアプリケーションにおけるab131339の使用に適用されます**
 アプリケーションノートには、推奨の開始希釈率がありますが、適切な希釈率につきましてはご検討ください。

アプリケーション	Abreviews	特記事項
WB	★★★★☆ (2)	1/500 - 1/1000. Detects a band of approximately 78-82 kDa (predicted molecular weight: 69 kDa). Incubate membrane with diluted antibody in 5% non fatmilk, 1X TBS, 0.1% Tween 20 at 4 C, with gentle shaking, overnight.
IHC-P		1/50 - 1/100.
ICC/IF	★★★★★ (1)	1/100 - 1/200.

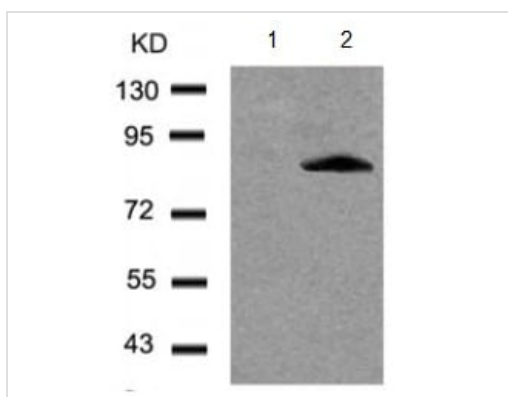
ターゲット情報

機能	Transcription factor which acts as a regulator of cell responses to oxidative stress. In the presence of KIRT1, mediates down-regulation of cyclin D1 and up-regulation of CDKN1B levels which are required for cell transition from proliferative growth to quiescence.
組織特異性	Ubiquitous.
関連疾患	Defects in FOXO1 are a cause of rhabdomyosarcoma type 2 (RMS2) [MIM:268220]. It is a form of rhabdomyosarcoma, a highly malignant tumor of striated muscle derived from primitive mesenchymal cells and exhibiting differentiation along rhabdomyoblastic lines. Rhabdomyosarcoma is one of the most frequently occurring soft tissue sarcomas and the most common in children. It occurs in four forms: alveolar, pleomorphic, embryonal and botryoidal rhabdomyosarcomas. Note=Chromosomal aberrations involving FOXO1 are found in rhabdomyosarcoma. Translocation (2;13)(q35;q14) with PAX3; translocation t(1;13)(p36;q14) with PAX7. The resulting protein is a transcriptional activator.
配列類似性	Contains 1 fork-head DNA-binding domain.
翻訳後修飾	Phosphorylated by AKT1; insulin-induced (By similarity). IGF1 rapidly induces phosphorylation of Ser-256, Thr-24, and Ser-319. Phosphorylation of Ser-256 decreases DNA-binding activity and promotes the phosphorylation of Thr-24, and Ser-319, permitting phosphorylation of Ser-322 and Ser-325, probably by CK1, leading to nuclear exclusion and loss of function. Phosphorylation of Ser-329 is independent of IGF1 and leads to reduced function. Phosphorylated upon DNA damage, probably by ATM or ATR.
細胞内局在	Cytoplasm. Nucleus. Shuttles between cytoplasm and nucleus.



Immunocytochemistry/ Immunofluorescence - Anti-FOXO1A (phospho S256) antibody (ab131339)

Immunofluorescent analysis of formalin-fixed, paraffin-embedded human breast tissue with Anti-FOXO1A at 1/100 dilution. A Goat Anti-Rabbit IgG H&L (CY3) at 1/50 was used as secondary.



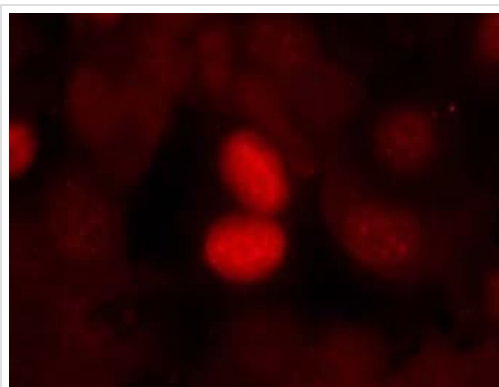
Western blot - Anti-FOXO1A (phospho S256) antibody (ab131339)

All lanes : Anti-FOXO1A (phospho S256) antibody (ab131339) at 1/500 dilution

Lane 1 : 293 cell extracts

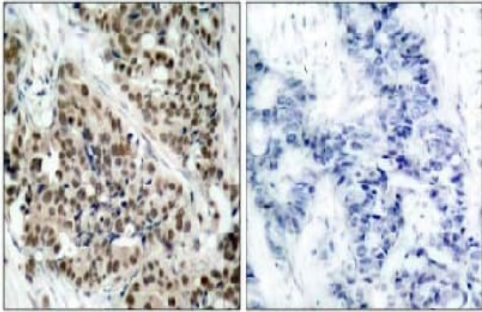
Lane 2 : 293 cell extracts treated with serum

Predicted band size: 69 kDa



Immunocytochemistry/ Immunofluorescence - Anti-FOXO1A (phospho S256) antibody (ab131339)

Immunofluorescence analysis of methanol-fixed MCF7 cells using ab131339 at a 1/100 dilution.



Immunohistochemistry (Formalin/PFA-fixed paraffin-embedded sections) - Anti-FOXO1A (phospho S256) antibody (ab131339)

Immunohistochemical analysis of paraffin-embedded Human breast carcinoma tissue using ab131339 at a 1/50 dilution, in the absence (left) and presence (right) of the blocking peptide.

Please note: All products are "FOR RESEARCH USE ONLY. NOT FOR USE IN DIAGNOSTIC PROCEDURES"

Our Abpromise to you: Quality guaranteed and expert technical support

- Replacement or refund for products not performing as stated on the datasheet
- Valid for 12 months from date of delivery
- Response to your inquiry within 24 hours
- We provide support in Chinese, English, French, German, Japanese and Spanish
- Extensive multi-media technical resources to help you
- We investigate all quality concerns to ensure our products perform to the highest standards

If the product does not perform as described on this datasheet, we will offer a refund or replacement. For full details of the Abpromise, please visit <https://www.abcam.co.jp/abpromise> or contact our technical team.

Terms and conditions

- Guarantee only valid for products bought direct from Abcam or one of our authorized distributors