


### Anti-FoxJ1 antibody ab64855

画像数 1

#### 製品の概要

製品名	Anti-FoxJ1 antibody
製品の詳細	Rabbit polyclonal to FoxJ1
由来種	Rabbit
アプリケーション	適用あり: WB
種交差性	交差種: Human 交差が予測される動物種: Mouse, Rat 
免疫原	Synthetic peptide corresponding to Human FoxJ1 (internal sequence).
ポジティブ・コントロール	Extracts from LOVO cells.
特記事項	<p>The Life Science industry has been in the grips of a reproducibility crisis for a number of years. Abcam is leading the way in addressing this with our range of recombinant monoclonal antibodies and knockout edited cell lines for gold-standard validation. Please check that this product meets your needs before purchasing.</p> <p>If you have any questions, special requirements or concerns, please send us an inquiry and/or contact our Support team ahead of purchase. Recommended alternatives for this product can be found below, along with publications, customer reviews and Q&amp;As</p>

#### 製品の特性

製品の状態	Liquid
保存方法	Shipped at 4°C. Store at -20°C. Stable for 12 months at -20°C.
バッファー	<p>pH: 7.40</p> <p>Preservative: 0.02% Sodium azide</p> <p>Constituents: PBS, 50% Glycerol (glycerin, glycerine), 0.87% Sodium chloride</p>
精製度	Without Mg <sup>2+</sup> and Ca <sup>2+</sup>
ポリ/モノ	ポリクローナル
アイソタイプ	IgG

#### アプリケーション

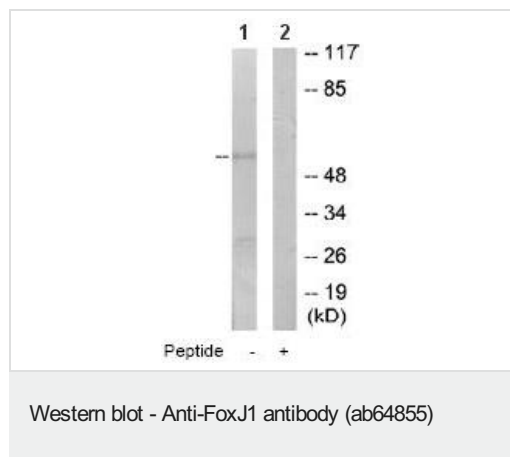
**The Abpromise guarantee**      **Abpromise保証は、** 次のテスト済みアプリケーションにおけるab64855の使用に適用されます  
 アプリケーションノートには、推奨の開始希釈率がありますが、適切な希釈率につきましてはご検討ください。

アプリケーション	Abreviews	特記事項
WB		1/500 - 1/1000. Detects a band of approximately 55 kDa (predicted molecular weight: 45 kDa).

## ターゲット情報

機能	May play an important role in cell fate determination during lung development and in spermatogenesis.
組織特異性	Testis, oviduct, lung and brain cortex.
関連疾患	Genetic variations in FOXJ1 may be associated with susceptibility to allergic rhinitis (ALRH) [MIM:607154]. Allergic rhinitis is a common disease of complex inheritance and is characterized by mucosal inflammation caused by allergen exposure.
配列類似性	Contains 1 fork-head DNA-binding domain.
発生段階	Expressed in developing lung, kidney and central nervous system.
細胞内局在	Nucleus.

## 画像



**All lanes :** Anti-FoxJ1 antibody (ab64855) at 1/500 dilution

**Lane 1 :** Extracts from LOVO cells

**Lane 2 :** Extracts from LOVO cells with immunising peptide at 10 µg

Lysates/proteins at 30 µg per lane.

**Predicted band size:** 45 kDa

**Observed band size:** 55 kDa

**Please note:** All products are "FOR RESEARCH USE ONLY. NOT FOR USE IN DIAGNOSTIC PROCEDURES"

## Our Abpromise to you: Quality guaranteed and expert technical support

- Replacement or refund for products not performing as stated on the datasheet
- Valid for 12 months from date of delivery
- Response to your inquiry within 24 hours

- We provide support in Chinese, English, French, German, Japanese and Spanish
- Extensive multi-media technical resources to help you
- We investigate all quality concerns to ensure our products perform to the highest standards

If the product does not perform as described on this datasheet, we will offer a refund or replacement. For full details of the Abpromise, please visit <https://www.abcam.co.jp/abpromise> or contact our technical team.

#### **Terms and conditions**

---

- Guarantee only valid for products bought direct from Abcam or one of our authorized distributors