


# Anti-FOXC2 antibody ab5060

[27 References](#) [画像数 2](#)

### 製品の概要

製品名	Anti-FOXC2 antibody
製品の詳細	Goat polyclonal to FOXC2
由来種	Goat
アプリケーション	<b>適用あり:</b> WB, ChIP <b>適用なし:</b> IHC-Fr
種交差性	<b>交差種:</b> Mouse, Human, African green monkey <b>交差が予測される動物種:</b> Rat, Cow, Dog 
免疫原	Synthetic peptide: RHAAPYSYDCTKY , corresponding to C terminal amino acids 489-501 of Human FOXC2. <a href="#">Run BLAST with</a> <a href="#">Run BLAST with</a>
ポジティブ・コントロール	WB: HEK-293 nuclear lysate.
特記事項	<p>The Life Science industry has been in the grips of a reproducibility crisis for a number of years. Abcam is leading the way in addressing this with our range of recombinant monoclonal antibodies and knockout edited cell lines for gold-standard validation. Please check that this product meets your needs before purchasing.</p> <p>If you have any questions, special requirements or concerns, please send us an inquiry and/or contact our Support team ahead of purchase. Recommended alternatives for this product can be found below, along with publications, customer reviews and Q&amp;As</p>

### 製品の特性

製品の状態	Liquid
保存方法	Shipped at 4°C. Store at +4°C short term (1-2 weeks). Upon delivery aliquot. Store at -20°C or -80°C. Avoid freeze / thaw cycle.
バッファー	pH: 7.3 Preservative: 0.02% Sodium azide Constituents: Tris buffered saline, 0.5% BSA
精製度	Immunogen affinity purified
特記事項 (精製)	Purified from goat serum by ammonium sulphate precipitation followed by antigen affinity chromatography using the immunizing peptide.

ポリモノ  
アイソタイプ

ポリクローナル  
IgG

## アプリケーション

**The Abpromise guarantee** Abpromise保証は、次のテスト済みアプリケーションにおけるab5060の使用に適用されます  
アプリケーションノートには、推奨の開始希釈率がありますが、適切な希釈率につきましてはご検討ください。

アプリケーション	Abreviews	特記事項
WB		Use a concentration of 0.1 - 2 µg/ml. Detects a band of approximately 60-70 kDa (predicted molecular weight: 53 kDa). A 1 hour primary incubation is recommended for this product.
ChIP		Use at an assay dependent concentration. PubMed: 18579532

## 追加情報

Is unsuitable for IHC-Fr.

## ターゲット情報

### 機能

Transcriptional activator. Might be involved in the formation of special mesenchymal tissues.

### 関連疾患

Defects in FOXC2 are the cause of lymphedema hereditary type 2 (LMPH2) [MIM:153200]; also known as Meige lymphedema. Hereditary lymphedema is a chronic disabling condition which results in swelling of the extremities due to altered lymphatic flow. Patients with lymphedema suffer from recurrent local infections, and physical impairment.

Defects in FOXC2 are a cause of lymphedema-yellow nails (LYYN) [MIM:153300]. LYYN is characterized by yellow, dystrophic, thick and slowly growing nails, associated with lymphedema and respiratory involvement. Lymphedema occurs more often in the lower limbs. It can appear at birth or later in life. Onset generally follows the onset of ungual abnormalities.

Defects in FOXC2 are a cause of lymphedema-distichiasis (LYD) [MIM:153400]. LYD is characterized by primary limb lymphedema usually starting at puberty (but in some cases later or at birth) and associated with distichiasis (double rows of eyelashes, with extra eyelashes growing from the Meibomian gland orifices).

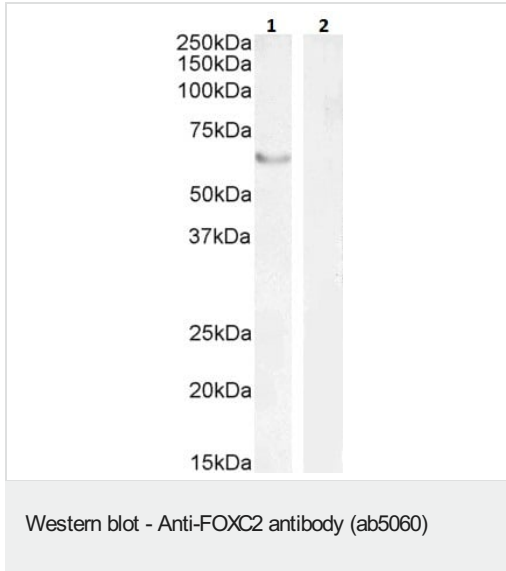
### 配列類似性

Contains 1 fork-head DNA-binding domain.

### 細胞内局在

Nucleus.

## 画像



**Lane 1 :** Anti-FOXC2 antibody (ab5060) at 2 µg/ml

**Lane 2 :** Anti-FOXC2 antibody (ab5060) at 1 µg/ml

**Lane 1 :** nuclear HEK293 lysate in RIPA buffer

**Lane 2 :** human pancreas whole cell lysate (negative control) in RIPA buffer

Lysates/proteins at 35 µg per lane.

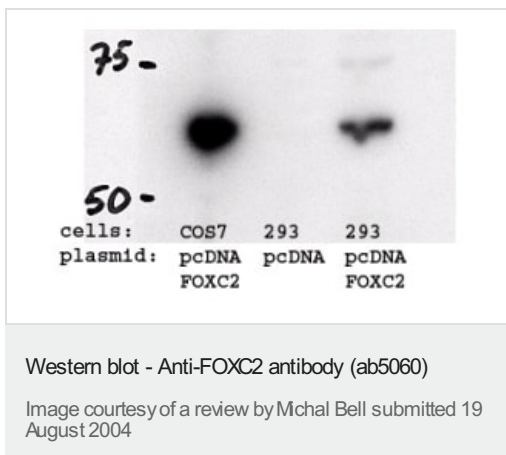
Developed using the ECL technique.

**Predicted band size:** 53 kDa

**Observed band size:** 60-70 kDa

Primary incubation: 1 hour at room temperature.

**Negative Control:** Human Pancreas lysate.



FoxC2 is highly expressed in COS7 and 293 cells transiently transfected with pcDNA-FOXC2. This figure shows a western blot incubated with the ab5060 antibody after running lysates from COS7 and 293 cells transiently expressing FoxC2 (lane 1 and 3 respectively). Lane 2 shows a negative control of 293 cells transfected with an empty vector.

**Please note:** All products are "FOR RESEARCH USE ONLY. NOT FOR USE IN DIAGNOSTIC PROCEDURES"

**Our Abpromise to you: Quality guaranteed and expert technical support**

- Replacement or refund for products not performing as stated on the datasheet

- Valid for 12 months from date of delivery
- Response to your inquiry within 24 hours
  
- We provide support in Chinese, English, French, German, Japanese and Spanish
- Extensive multi-media technical resources to help you
- We investigate all quality concerns to ensure our products perform to the highest standards

If the product does not perform as described on this datasheet, we will offer a refund or replacement. For full details of the Abpromise, please visit <https://www.abcam.co.jp/abpromise> or contact our technical team.

### **Terms and conditions**

---

- Guarantee only valid for products bought direct from Abcam or one of our authorized distributors