


### Anti-FOLR2 antibody ab103998

画像数 2

#### 製品の概要

---

製品名	Anti-FOLR2 antibody
製品の詳細	Rabbit polyclonal to FOLR2
由来種	Rabbit
アプリケーション	<b>適用あり:</b> ICC/IF, WB
種交差性	<b>交差種:</b> Human <b>交差が予測される動物種:</b> Rat 
免疫原	Synthetic peptide corresponding to Human FOLR2 aa 1-100 conjugated to keyhole limpet haemocyanin. (Peptide available as <a href="#">ab104497</a> )
ポジティブ・コントロール	This antibody gave a positive signal in the following human tissue lysates: Spleen; Bone marrow; Thymus
特記事項	<p>The Life Science industry has been in the grips of a reproducibility crisis for a number of years. Abcam is leading the way in addressing this with our range of recombinant monoclonal antibodies and knockout edited cell lines for gold-standard validation. Please check that this product meets your needs before purchasing.</p> <p>If you have any questions, special requirements or concerns, please send us an inquiry and/or contact our Support team ahead of purchase. Recommended alternatives for this product can be found below, along with publications, customer reviews and Q&amp;As</p>

#### 製品の特性

---

製品の状態	Liquid
保存方法	Shipped at 4°C. Store at +4°C short term (1-2 weeks). Upon delivery aliquot. Store at -20°C or -80°C. Avoid freeze / thaw cycle.
バッファー	pH: 7.40 Preservative: 0.02% Sodium azide Constituent: PBS

Batches of this product that have a concentration < 1mg/ml may have BSA added as a stabilising agent. If you would like information about the formulation of a specific lot, please contact our scientific support team who will be happy to help.

精製度	Immunogen affinity purified
ポリモノ	ポリクローナル
アイソタイプ	IgG

## アプリケーション

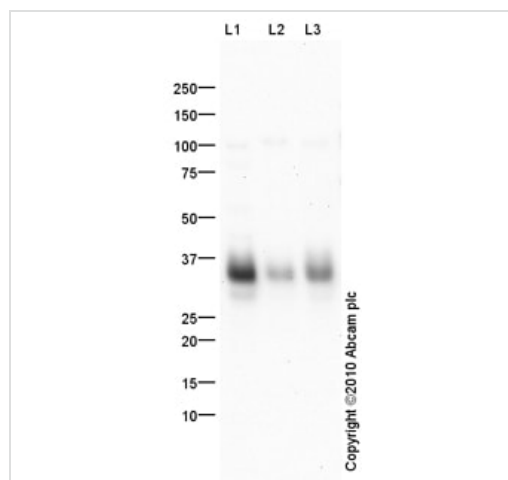
**The Abpromise guarantee** **Abpromise保証は、次のテスト済みアプリケーションにおけるab103998の使用に適用されます**  
 アプリケーションノートには、推奨の開始希釈率がありますが、適切な希釈率につきましてはご検討ください。

アプリケーション	Abreviews	特記事項
ICC/IF		Use a concentration of 5 µg/ml.
WB		Use a concentration of 1 µg/ml. Detects a band of approximately 35 kDa (predicted molecular weight: 32 kDa).

## ターゲット情報

機能	Binds to folate and reduced folic acid derivatives and mediates delivery of 5-methyltetrahydrofolate to the interior of cells.
組織特異性	Expressed in placenta and hematopoietic cells. Expression is increased in malignant tissues.
配列類似性	Belongs to the folate receptor family.
翻訳後修飾	Eight disulfide bonds are present. N-glycosylated.
細胞内局在	Cell membrane. Secreted.

## 画像



Western blot - Anti-FOLR2 antibody (ab103998)

**All lanes** : Anti-FOLR2 antibody (ab103998) at 1 µg/ml

**Lane 1** : Human spleen tissue lysate - total protein ([ab29699](#))

**Lane 2** : Bone marrow (Human) Tissue Lysate

**Lane 3** : Human thymus tissue lysate - total protein ([ab30146](#))

Lysates/proteins at 10 µg per lane.

### Secondary

**All lanes** : Goat Anti-Rabbit IgG H&L (HRP) preadsorbed ([ab97080](#)) at 1/5000 dilution

Developed using the ECL technique.

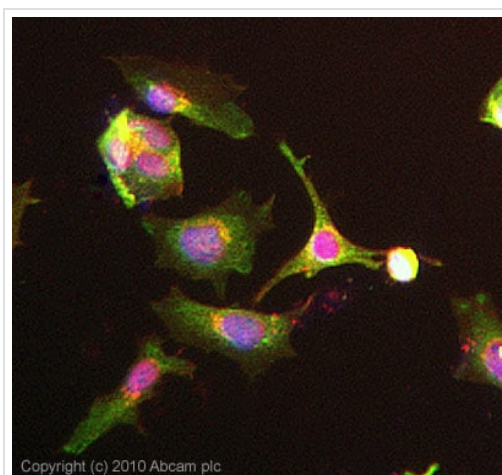
Performed under reducing conditions.

**Predicted band size:** 32 kDa

**Observed band size:** 35 kDa

**Exposure time:** 8 minutes

FOLR2 contains a number of potential glycosylation sites (SwissProt) which may explain its migration at a higher molecular weight than predicted.



Copyright (c) 2010 Abcam plc

Immunocytochemistry/ Immunofluorescence - Anti-FOLR2 antibody (ab103998)

ICC/IF image of ab103998 stained HeLa cells. The cells were 4% formaldehyde fixed (10 min) and then incubated in 1%BSA / 10% normal goat serum / 0.3M glycine in 0.1% PBS-Tween for 1h to permeabilise the cells and block non-specific protein-protein interactions. The cells were then incubated with the antibody ab103998 at 5µg/ml overnight at +4°C. The secondary antibody (green) was Alexa Fluor® 488 goat anti- rabbit IgG (H+L) used at a 1/1000 dilution for 1h. Alexa Fluor® 594 WGA was used to label plasma membranes (red) at a 1/200 dilution for 1h. DAPI was used to stain the cell nuclei (blue) at a concentration of 1.43µM. This antibody also gave a positive result in Hek293, HepG2, and MCF-7 formaldehyde fixed cells at 5ug/ml and also in HeLa, Hek293, HepG2, and MCF-7 Methanol fixed cells at 5ug/ml.

**Please note:** All products are "FOR RESEARCH USE ONLY. NOT FOR USE IN DIAGNOSTIC PROCEDURES"

### **Our Abpromise to you: Quality guaranteed and expert technical support**

---

- Replacement or refund for products not performing as stated on the datasheet
- Valid for 12 months from date of delivery
- Response to your inquiry within 24 hours
- We provide support in Chinese, English, French, German, Japanese and Spanish
- Extensive multi-media technical resources to help you
- We investigate all quality concerns to ensure our products perform to the highest standards

If the product does not perform as described on this datasheet, we will offer a refund or replacement. For full details of the Abpromise, please visit <https://www.abcam.co.jp/abpromise> or contact our technical team.

### **Terms and conditions**

---

- Guarantee only valid for products bought direct from Abcam or one of our authorized distributors