

Anti-FMN2 antibody ab72052

6 References [画像数 2](#)

製品の概要

製品名	Anti-FMN2 antibody
製品の詳細	Rabbit polyclonal to FMN2
由来種	Rabbit
アプリケーション	適用あり: IHC-P, WB
種交差性	交差種: Human
免疫原	Synthetic peptide (Human) corresponding to a region between residues 650-700 of human FMN2. (NP_064450.3).
ポジティブ・コントロール	human brain lysate.
特記事項	<p>The Life Science industry has been in the grips of a reproducibility crisis for a number of years. Abcam is leading the way in addressing this with our range of recombinant monoclonal antibodies and knockout edited cell lines for gold-standard validation. Please check that this product meets your needs before purchasing.</p> <p>If you have any questions, special requirements or concerns, please send us an inquiry and/or contact our Support team ahead of purchase. Recommended alternatives for this product can be found below, along with publications, customer reviews and Q&As</p>

製品の特性

製品の状態	Liquid
保存方法	Shipped at 4°C. Upon delivery aliquot and store at -20°C or -80°C. Avoid repeated freeze / thaw cycles.
バッファー	<p>pH: 7.40</p> <p>Preservative: 0.05% Sodium azide</p> <p>Constituents: 0.05% BSA, PBS</p>
精製度	Protein A purified
ポリ/モノ	ポリクローナル
アイソタイプ	IgG

アプリケーション

The Abpromise guarantee

Abpromise保証は、次のテスト済みアプリケーションにおけるab72052の使用に適用されます

アプリケーションノートには、推奨の開始希釈率がありますが、適切な希釈率につきましてはご確認ください。

アプリケーション	Abreviews	特記事項
IHC-P		
WB		

追加情報

WB: Use at a concentration of 0.25 - 0.5 µg/ml. Detects bands of approximately 67 and 150 kDa (predicted molecular weight: 180 kDa).

Not yet tested in other applications.

Optimal dilutions/concentrations should be determined by the end user.

ターゲット情報

機能

Required for asymmetric spindle positioning, asymmetric oocyte division and polar body extrusion during female germ cell meiosis (By similarity). Actin-binding protein that is involved in actin cytoskeleton assembly and reorganization. Acts as an actin nucleation factor and promotes assembly of actin filaments together with SPIRE1 and SPIRE2. Involved in intracellular vesicle transport along actin fibers, providing a novel link between actin cytoskeleton dynamics and intracellular transport. Plays a role in responses to DNA damage, cellular stress and hypoxia by protecting CDKN1A against degradation, and thereby plays a role in stress-induced cell cycle arrest. Protects cells against apoptosis by protecting CDKN1A against degradation.

組織特異性

Expressed almost exclusively in the developing and mature central nervous system.

配列類似性

Belongs to the formin homology family. Cappuccino subfamily.

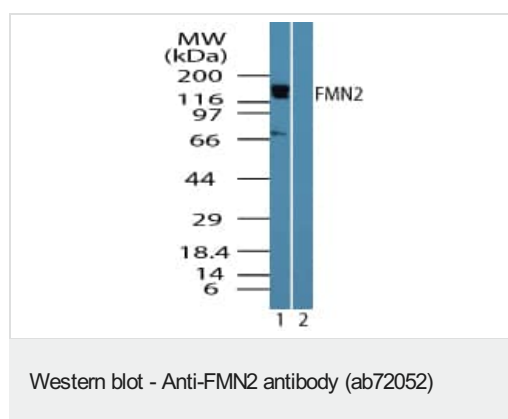
Contains 1 FH1 (formin homology 1) domain.

Contains 1 FH2 (formin homology 2) domain.

細胞内局在

Cytoplasm > cytoskeleton. Cytoplasm > perinuclear region. Cytoplasm > cytosol. Cell membrane. Cytoplasmic vesicle membrane. Cytoplasm > cell cortex. Nucleus > nucleolus. Recruited to the membranes via its interaction with SPIRE1. Colocalizes with the actin cytoskeleton. Detected at the cleavage furrow during asymmetric oocyte division and polar body extrusion.

画像



All lanes : Anti-FMN2 antibody (ab72052) at 0.25 µg/ml

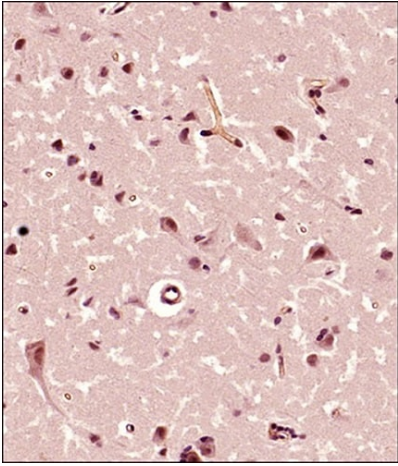
Lane 1 : human brain lysate

Lane 2 : human brain lysate with immunising peptide

Predicted band size: 180 kDa

Observed band size: 150 kDa

Additional bands at: 67 kDa. We are unsure as to the identity of these extra bands.



Immunohistochemical analysis of formalin fixed and paraffin embedded Human brain tissue section staining FMN2 using ab72052 at 1/300 dilution. HRP- labeled was used as the secondary antibody and hematoxylin was used as a nuclei counterstain.

Immunohistochemistry (Formalin/PFA-fixed paraffin-embedded sections) - Anti-FMN2 antibody (ab72052)

Please note: All products are "FOR RESEARCH USE ONLY. NOT FOR USE IN DIAGNOSTIC PROCEDURES"

Our Abpromise to you: Quality guaranteed and expert technical support

- Replacement or refund for products not performing as stated on the datasheet
- Valid for 12 months from date of delivery
- Response to your inquiry within 24 hours
- We provide support in Chinese, English, French, German, Japanese and Spanish
- Extensive multi-media technical resources to help you
- We investigate all quality concerns to ensure our products perform to the highest standards

If the product does not perform as described on this datasheet, we will offer a refund or replacement. For full details of the Abpromise, please visit <https://www.abcam.co.jp/abpromise> or contact our technical team.

Terms and conditions

- Guarantee only valid for products bought direct from Abcam or one of our authorized distributors