
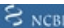


# Anti-Flotillin 2/ESA antibody ab113661

画像数 3

### 製品の概要

|              |   |
|--------------|---|
| 製品名          | Anti-Flotillin 2/ESA antibody   |
| 製品の詳細        | Goat polyclonal to Flotillin 2/ESA  |
| 由来種          | Goat  |
| アプリケーション     | <b>適用あり:</b> WB, IHC-P  |
| 種交差性         | <b>交差種:</b> Human<br><b>交差が予測される動物種:</b> Cow, Dog    |
| 免疫原          | Synthetic peptide corresponding to Human Flotillin 2/ESA aa 400-500 (C terminal).<br> <b>Run BLAST with</b>  <b>Run BLAST with</b>   |
| ポジティブ・コントロール | Human Kidney and Human Tonsil tissue. Human Brain (Cerebellum) lysate   |
| 特記事項         | <p>The Life Science industry has been in the grips of a reproducibility crisis for a number of years. Abcam is leading the way in addressing this with our range of recombinant monoclonal antibodies and knockout edited cell lines for gold-standard validation. Please check that this product meets your needs before purchasing.</p> <p>If you have any questions, special requirements or concerns, please send us an inquiry and/or contact our Support team ahead of purchase. Recommended alternatives for this product can be found below, along with publications, customer reviews and Q&amp;As</p> |

### 製品の特性

|        |   |
|--------|---|
| 製品の状態  | Liquid  |
| 保存方法   | Shipped at 4°C. Upon delivery aliquot. Store at -20°C or -80°C. Avoid freeze / thaw cycle.  |
| バッファー  | pH: 7.3<br>Preservative: 0.02% Sodium azide<br>Constituents: Tris buffered saline, 0.5% BSA |
| 精製度    | Immunogen affinity purified   |
| ポリ/モノ  | ポリクローナル   |
| アイソタイプ | IgG   |

### アプリケーション

## The Abpromise guarantee

Abpromise保証は、次のテスト済みアプリケーションにおけるab113661の使用に適用されます

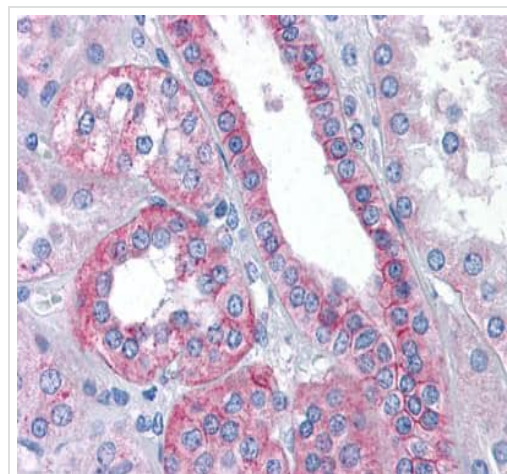
アプリケーションノートには、推奨の開始希釈率がありますが、適切な希釈率につきましてはご確認ください。

| アプリケーション | Abreviews | 特記事項  |
|----------|-----------|---|
| WB       |           | Use a concentration of 0.1 - 0.3 µg/ml. Predicted molecular weight: 47 kDa. |
| IHC-P    |           | Use a concentration of 3.75 µg/ml.  |

## ターゲット情報

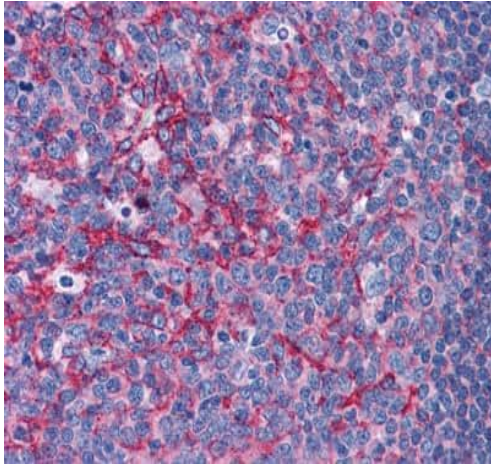
|       |   |
|-------|---|
| 機能    | May act as a scaffolding protein within caveolar membranes, functionally participating in formation of caveolae or caveolae-like vesicles. May be involved in epidermal cell adhesion and epidermal structure and function.   |
| 組織特異性 | In skin, expressed in epidermis and epidermal appendages but not in dermis. Expressed in all layers of the epidermis except the basal layer. In hair follicles, expressed in the suprabasal layer but not the basal layer. Also expressed in melanoma and carcinoma cell lines, fibroblasts and foreskin melanocytes. |
| 配列類似性 | Belongs to the band 7/mec-2 family. Flotillin subfamily.  |
| 細胞内局在 | Cell membrane. Membrane > caveola. Endosome. Membrane-associated protein of caveolae.   |

## 画像



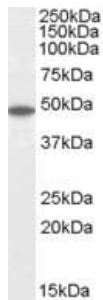
Immunohistochemistry analysis of formalin-fixed, paraffin-embedded Human Kidney with ab113661 at 3.75ug/ml

Immunohistochemistry (Formalin/PFA-fixed paraffin-embedded sections) - Anti-Flotillin 2/ESA antibody (ab113661)



Immunohistochemistry analysis of formalin-fixed, paraffin-embedded Human Tonsil with ab113661 at 3.75ug/ml

Immunohistochemistry (Formalin/PFA-fixed paraffin-embedded sections) - Anti-Flotillin 2/ESA antibody (ab113661)



Anti-Flotillin 2/ESA antibody (ab113661) at 0.1 µg/ml + Human Brain (Cerebellum) lysate at 35 µg/ml

Developed using the ECL technique.

**Predicted band size:** 47 kDa

Western blot - Anti-Flotillin 2/ESA antibody (ab113661)

Primary incubation was 1 hour.

**Please note:** All products are "FOR RESEARCH USE ONLY. NOT FOR USE IN DIAGNOSTIC PROCEDURES"

### Our Abpromise to you: Quality guaranteed and expert technical support

- Replacement or refund for products not performing as stated on the datasheet
- Valid for 12 months from date of delivery
- Response to your inquiry within 24 hours
- We provide support in Chinese, English, French, German, Japanese and Spanish
- Extensive multi-media technical resources to help you
- We investigate all quality concerns to ensure our products perform to the highest standards

If the product does not perform as described on this datasheet, we will offer a refund or replacement. For full details of the Abpromise,

please visit <https://www.abcam.co.jp/abpromise> or contact our technical team.

#### **Terms and conditions**

---

- Guarantee only valid for products bought direct from Abcam or one of our authorized distributors