


### Anti-FKBP12 antibody ab24373

KO 評価済

★★★★★ [4 Abreviews](#) [11 References](#) [画像数 3](#)

#### 製品の概要

製品名	Anti-FKBP12 antibody
製品の詳細	Rabbit polyclonal to FKBP12
由来種	Rabbit
アプリケーション	適用あり: WB
種交差性	交差種: Mouse, Rat, Human 交差が予測される動物種: Cow, Pig 
免疫原	Synthetic peptide. This information is proprietary to Abcam and/or its suppliers.
特記事項	<p>The Life Science industry has been in the grips of a reproducibility crisis for a number of years. Abcam is leading the way in addressing this with our range of recombinant monoclonal antibodies and knockout edited cell lines for gold-standard validation. Please check that this product meets your needs before purchasing.</p> <p>If you have any questions, special requirements or concerns, please send us an inquiry and/or contact our Support team ahead of purchase. Recommended alternatives for this product can be found below, along with publications, customer reviews and Q&amp;As</p>

#### 製品の特性

製品の状態	Liquid
保存方法	Shipped at 4°C. Store at +4°C short term (1-2 weeks). Upon delivery aliquot. Store at -20°C or -80°C. Avoid freeze / thaw cycle.
バッファー	<p>pH: 7.40</p> <p>Preservative: 0.02% Sodium azide</p> <p>Constituent: PBS</p> <p>Batches of this product that have a concentration &lt; 1mg/ml may have BSA added as a stabilising agent. If you would like information about the formulation of a specific lot, please contact our scientific support team who will be happy to help.</p>
精製度	Immunogen affinity purified
ポリ/モノ	ポリクローナル

## アプリケーション

### The Abpromise guarantee

**Abpromise保証は、次のテスト済みアプリケーションにおけるab24373の使用に適用されます**

アプリケーションノートには、推奨の開始希釈率がありますが、適切な希釈率につきましてはご検討ください。

アプリケーション	Abreviews	特記事項
WB	★★★★★ (2)	Use a concentration of 1 µg/ml. Detects a band of approximately 12 kDa (predicted molecular weight: 12 kDa).

## ターゲット情報

### 機能

May play a role in modulation of ryanodine receptor isoform-1 (RyR-1), a component of the calcium release channel of skeletal muscle sarcoplasmic reticulum. There are four molecules of FKBP12 per skeletal muscle RyR. PPlases accelerate the folding of proteins. It catalyzes the cis-trans isomerization of proline imidic peptide bonds in oligopeptides.

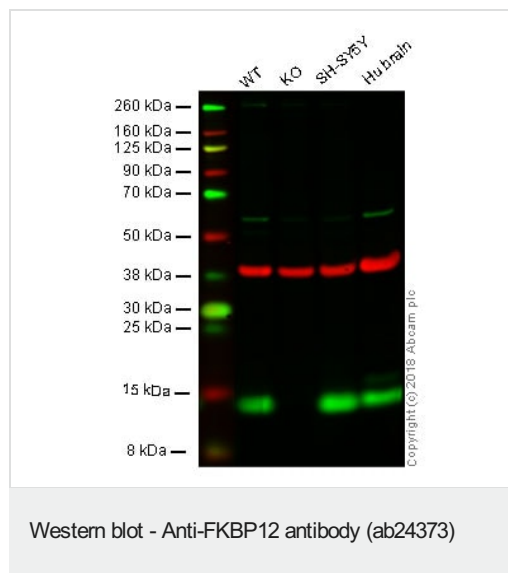
### 配列類似性

Belongs to the FKBP-type PPlase family. FKBP1 subfamily.  
Contains 1 PPlase FKBP-type domain.

### 細胞内局在

Cytoplasm.

## 画像



**Lane 1:** Wild-type HAP1 whole cell lysate (20 µg)

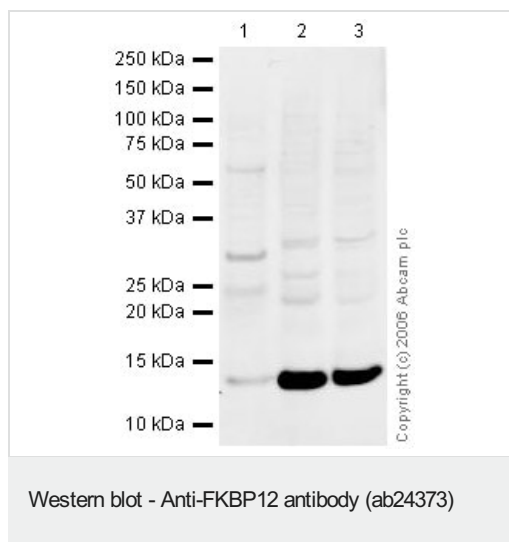
**Lane 2:** FKBP1A knockout HAP1 whole cell lysate (20 µg)

**Lane 3:** SH-SY5Y whole cell lysate (20 µg)

**Lane 4:** Human brain whole tissue lysate (20 µg)

**Lanes 1 - 4:** Merged signal (red and green). Green - ab24373 observed at 12 kDa. Red - loading control, **ab9484**, observed at 37 kDa.

ab24373 was shown to specifically react with FKBP12 in wild-type HAP1 cells as signal was lost in FKBP1A knockout cells. Wild-type and FKBP1A knockout samples were subjected to SDS-PAGE. ab24373 and **ab9484** (Mouse anti-GAPDH loading control) were incubated overnight at 4°C at 1 µg/ml and 1/20000 dilution respectively. Blots were developed with Goat anti-Rabbit IgG H&L (IRDye® 800CW) preabsorbed **ab216773** and Goat anti-Mouse IgG H&L (IRDye® 680RD) preabsorbed **ab216776** secondary antibodies at 1/20000 dilution for 1 hour at room temperature before imaging.



**All lanes :** Anti-FKBP12 antibody (ab24373) at 1 µg/ml

**Lane 1 :** Human Brain Tissue Lysate

**Lane 2 :** Mouse Brain Tissue Lysate

**Lane 3 :** Rat Brain Tissue Lysate

Lysates/proteins at 20 µg per lane.

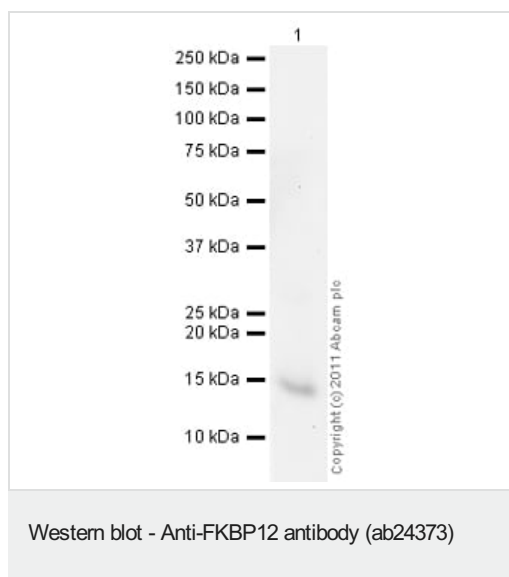
#### Secondary

**All lanes :** Goat polyclonal to Rabbit IgG (Alexa Fluor® 680) at 1/10000 dilution

Performed under reducing conditions.

**Predicted band size:** 12 kDa

**Observed band size:** 12 kDa



Anti-FKBP12 antibody (ab24373) at 1 µg/ml + Recombinant Human FKBP12 protein ([ab56524](#)) at 0.1 µg

#### Secondary

Goat Anti-Rabbit IgG H&L (HRP) preadsorbed ([ab97080](#)) at 1/5000 dilution

Developed using the ECL technique.

Performed under reducing conditions.

**Predicted band size:** 12 kDa

**Exposure time:** 2 minutes

**Please note:** All products are "FOR RESEARCH USE ONLY. NOT FOR USE IN DIAGNOSTIC PROCEDURES"

#### Our Promise to you: Quality guaranteed and expert technical support

- Replacement or refund for products not performing as stated on the datasheet
- Valid for 12 months from date of delivery
- Response to your inquiry within 24 hours
- We provide support in Chinese, English, French, German, Japanese and Spanish

- Extensive multi-media technical resources to help you
- We investigate all quality concerns to ensure our products perform to the highest standards

If the product does not perform as described on this datasheet, we will offer a refund or replacement. For full details of the Abpromise, please visit <https://www.abcam.co.jp/abpromise> or contact our technical team.

#### **Terms and conditions**

---

- Guarantee only valid for products bought direct from Abcam or one of our authorized distributors