

# FITC Anti-VCAM1 antibody [M/K-2] ab24853

6 References [画像数 1](#)

### 製品の概要

製品名	FITC Anti-VCAM1 antibody [M/K-2]
製品の詳細	FITC Rat monoclonal [M/K-2] to VCAM1
由来種	Rat
標識	FITC. Ex: 493nm, Em: 528nm
アプリケーション	<b>適用あり:</b> Flow Cyt
種交差性	<b>交差種:</b> Mouse
免疫原	Tissue, cells or virus corresponding to Mouse VCAM1. BALB/3T3 and +/-2.4 cells
特記事項	<p>The Life Science industry has been in the grips of a reproducibility crisis for a number of years. Abcam is leading the way in addressing this with our range of recombinant monoclonal antibodies and knockout edited cell lines for gold-standard validation. Please check that this product meets your needs before purchasing.</p> <p>If you have any questions, special requirements or concerns, please send us an inquiry and/or contact our Support team ahead of purchase. Recommended alternatives for this product can be found below, along with publications, customer reviews and Q&amp;As</p>

### 製品の特性

製品の状態	Liquid
保存方法	Shipped at 4°C. Store at +4°C. Store In the Dark.
バッファー	pH: 7.4
精製度	Affinity purified
ポリ/モノ	モノクローナル
クローン名	M/K-2
アイソタイプ	IgG1
軽鎖の種類	kappa

### アプリケーション

The Abpromise guarantee

**Abpromise保証は、** 次のテスト済みアプリケーションにおけるab24853の使用に適用されます

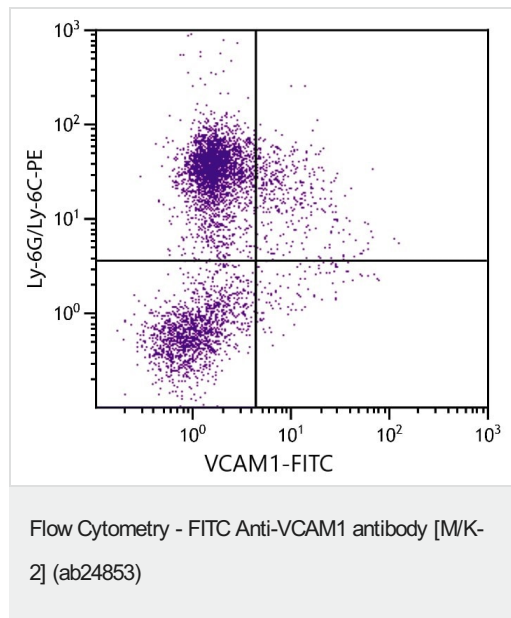
アプリケーションノートには、推奨の開始希釈率がありますが、適切な希釈率につきましてはご検討ください。

アプリケーション	Abreviews	特記事項
Flow Cyt		Use 1 µg for 10 <sup>6</sup> cells. <b>ab18404</b> - Rat monoclonal IgG1, is suitable for use as an isotype control with this antibody.

## ターゲット情報

機能	Important in cell-cell recognition. Appears to function in leukocyte-endothelial cell adhesion. Interacts with the beta-1 integrin VLA4 on leukocytes, and mediates both adhesion and signal transduction. The VCAM1/VLA4 interaction may play a pathophysiologic role both in immune responses and in leukocyte emigration to sites of inflammation.
組織特異性	Expressed on inflamed vascular endothelium, as well as on macrophage-like and dendritic cell types in both normal and inflamed tissue.
配列類似性	Contains 7 Ig-like C2-type (immunoglobulin-like) domains.
ドメイン	Either the first or the fourth Ig-like C2-type domain is required for VLA4-dependent cell adhesion.
翻訳後修飾	Sialoglycoprotein.
細胞内局在	Membrane.

## 画像



Flow Cytometry analysis of C57BL/6 mouse bone marrow cells stained with anti VCAM1 antibody [M/K-2] (FITC) (ab24853) and Rat Anti-Mouse Ly-6G/Ly-6C-PE. 1 µg of antibody was used for 10<sup>6</sup> cells.

**Please note:** All products are "FOR RESEARCH USE ONLY. NOT FOR USE IN DIAGNOSTIC PROCEDURES"

## Our Abpromise to you: Quality guaranteed and expert technical support

- Replacement or refund for products not performing as stated on the datasheet

- Valid for 12 months from date of delivery
- Response to your inquiry within 24 hours
- We provide support in Chinese, English, French, German, Japanese and Spanish
- Extensive multi-media technical resources to help you
- We investigate all quality concerns to ensure our products perform to the highest standards

If the product does not perform as described on this datasheet, we will offer a refund or replacement. For full details of the Abpromise, please visit <https://www.abcam.co.jp/abpromise> or contact our technical team.

#### **Terms and conditions**

---

- Guarantee only valid for products bought direct from Abcam or one of our authorized distributors