


FITC Anti-TLR9 antibody [5G5] ab58864

6 References 画像数 1

製品の概要

製品名	FITC Anti-TLR9 antibody [5G5]
製品の詳細	FITC Mouse monoclonal [5G5] to TLR9
由来種	Mouse
標識	FITC. Ex: 493nm, Em: 528nm
アプリケーション	適用あり: Flow Cyt (Intra)
種交差性	交差種: Human 交差が予測される動物種: Mouse, Dog 
免疫原	Recombinant fragment within Human TLR9 (extracellular). The exact immunogen sequence used to generate this antibody is proprietary information. If additional detail on the immunogen is needed to determine the suitability of the antibody for your needs, please contact our Scientific Support team to discuss your requirements.
ポジティブ・コントロール	RAW macrophages stimulated with IFN-gamma Flow Cyt (Intra): THP1 cells.
特記事項	<p>The Life Science industry has been in the grips of a reproducibility crisis for a number of years. Abcam is leading the way in addressing this with our range of recombinant monoclonal antibodies and knockout edited cell lines for gold-standard validation. Please check that this product meets your needs before purchasing.</p> <p>If you have any questions, special requirements or concerns, please send us an inquiry and/or contact our Support team ahead of purchase. Recommended alternatives for this product can be found below, along with publications, customer reviews and Q&As</p>

製品の特性

製品の状態	Liquid
保存方法	Shipped at 4°C. Store at +4°C.
バッファー	Preservative: 0.02% Sodium azide Constituents: PBS, 1% BSA
精製度	Protein G purified
特記事項(精製)	0.2 µm filtered
ポリ/モノ	モノクローナル
クローン名	5G5

アプリケーション

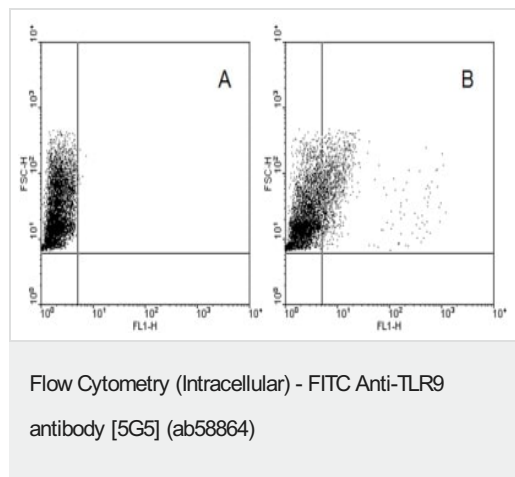
The Abpromise guarantee Abpromise保証は、次のテスト済みアプリケーションにおけるab58864の使用に適用されます
 アプリケーションノートには、推奨の開始希釈率がありますが、適切な希釈率につきましてはご確認ください。

アプリケーション	Abreviews	特記事項
Flow Cyt (Intra)		1/10 - 1/50. ab91362 - Mouse monoclonal IgG2a, is suitable for use as an isotype control with this antibody.

ターゲット情報

機能	Key component of innate and adaptive immunity. TLRs (Toll-like receptors) control host immune response against pathogens through recognition of molecular patterns specific of microorganisms. TLR9 is a nucleotide-sensing TLR which is activated by unmethylated cytidine-phosphate-guanosine (CpG) dinucleotides. Acts via MYD88 and TRAF6, leading to NF-kappa-B activation, cytokine secretion and the inflammatory response.
組織特異性	Highly expressed in spleen, lymph node, tonsil and peripheral blood leukocytes, especially in plasmacytoid pre-dendritic cells. Levels are much lower in monocytes and CD11c+ immature dendritic cells. Also detected in lung and liver.
配列類似性	Belongs to the Toll-like receptor family. Contains 26 LRR (leucine-rich) repeats. Contains 1 TIR domain.
細胞内局在	Endoplasmic reticulum membrane. Endosome. Lysosome. Cytoplasmic vesicle > phagosome. Relocalizes from endoplasmic reticulum to endosome and lysosome upon stimulation with agonist.

画像



THP1 cells were incubated with an IgG2a isotype control (A) or a- TLR9 5G5 mAb (B). Cells (140000) were permeabilized with saponin and stained with 0.4 µg 5G5.

Our Abpromise to you: Quality guaranteed and expert technical support

- Replacement or refund for products not performing as stated on the datasheet
- Valid for 12 months from date of delivery
- Response to your inquiry within 24 hours

- We provide support in Chinese, English, French, German, Japanese and Spanish
- Extensive multi-media technical resources to help you
- We investigate all quality concerns to ensure our products perform to the highest standards

If the product does not perform as described on this datasheet, we will offer a refund or replacement. For full details of the Abpromise, please visit <https://www.abcam.co.jp/abpromise> or contact our technical team.

Terms and conditions

- Guarantee only valid for products bought direct from Abcam or one of our authorized distributors