

FITC Anti-TIL/TLR1 antibody [GD2.F4] ab59702

★★★★★ [1 Abreviews](#) [画像数 1](#)

製品の概要

製品名	FITC Anti-TIL/TLR1 antibody [GD2.F4]
製品の詳細	FITC Mouse monoclonal [GD2.F4] to TIL/TLR1
由来種	Mouse
標識	FITC. Ex: 493nm, Em: 528nm
特異性	This antibody reacts with human TIL/TLR1. It does not recognize TLR2, TLR4 or TLR4 in association with MD2.
アプリケーション	適用あり: Flow Cyt
種交差性	交差種: Human
免疫原	Tissue, cells or virus corresponding to Human TIL/TLR1. HeLa cells transfected with TLR1 mRNA
特記事項	<p>The Life Science industry has been in the grips of a reproducibility crisis for a number of years. Abcam is leading the way in addressing this with our range of recombinant monoclonal antibodies and knockout edited cell lines for gold-standard validation. Please check that this product meets your needs before purchasing.</p> <p>If you have any questions, special requirements or concerns, please send us an inquiry and/or contact our Support team ahead of purchase. Recommended alternatives for this product can be found below, along with publications, customer reviews and Q&As</p>

製品の特性

製品の状態	Liquid
保存方法	Shipped at 4°C. Store at +4°C.
バッファー	Preservative: 0.02% Sodium azide Constituents: PBS, 1% BSA
精製度	Protein G purified
特記事項(精製)	0.2µm filtered solution.
ポリ/モノ	モノクローナル
クローン名	GD2.F4
アイソタイプ	IgG1

アプリケーション

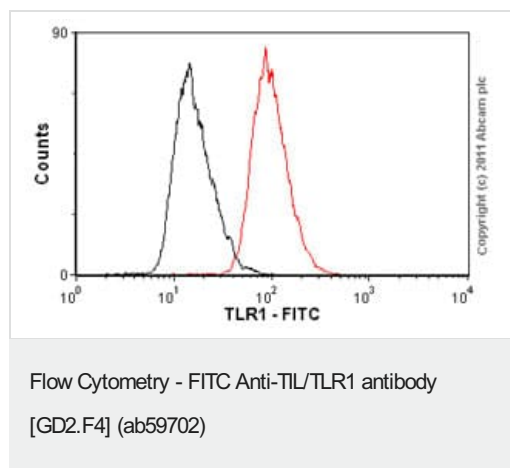
The Abpromise guarantee Abpromise保証は、次のテスト済みアプリケーションにおけるab59702の使用に適用されます
アプリケーションノートには、推奨の開始希釈率がありますが、適切な希釈率につきましてはご確認ください。

アプリケーション	Abreviews	特記事項
Flow Cyt	★★★★★ (1)	Use 10µl for 10 ⁶ cells. ab91356 - Mouse monoclonal IgG1, is suitable for use as an isotype control with this antibody.

ターゲット情報

機能	Participates in the innate immune response to microbial agents. Cooperates with TLR2 to mediate the innate immune response to bacterial lipoproteins or lipopeptides. Acts via MYD88 and TRAF6, leading to NF-kappa-B activation, cytokine secretion and the inflammatory response.
組織特異性	Ubiquitous. Highly expressed in spleen, ovary, peripheral blood leukocytes, thymus and small intestine.
配列類似性	Belongs to the Toll-like receptor family. Contains 12 LRR (leucine-rich) repeats. Contains 1 LRRCT domain. Contains 1 TIR domain.
細胞内局在	Cell membrane. Cytoplasmic vesicle > phagosome membrane.

画像



Overlay histogram showing TLR1/THP1 cells stained with ab59702 (red line). The cells were fixed with 80% methanol (5 min) and incubated in 1x PBS / 10% normal goat serum / 0.3M glycine to block non-specific protein-protein interactions. The cells were then incubated with the antibody (ab59702, 1µg/1x10⁶ cells) for 30 min at 22°C. Isotype control antibody (black line) was mouse IgG1 FITC (1µg/1x10⁶ cells) used under the same conditions. Acquisition of >5,000 events was performed.

Please note that Abcam do not have any data for use of this antibody on non-fixed cells. We welcome any customer feedback.

Please note: All products are "FOR RESEARCH USE ONLY. NOT FOR USE IN DIAGNOSTIC PROCEDURES"

Our Abpromise to you: Quality guaranteed and expert technical support

- Replacement or refund for products not performing as stated on the datasheet
- Valid for 12 months from date of delivery
- Response to your inquiry within 24 hours

- We provide support in Chinese, English, French, German, Japanese and Spanish
- Extensive multi-media technical resources to help you
- We investigate all quality concerns to ensure our products perform to the highest standards

If the product does not perform as described on this datasheet, we will offer a refund or replacement. For full details of the Abpromise, please visit <https://www.abcam.co.jp/abpromise> or contact our technical team.

Terms and conditions

- Guarantee only valid for products bought direct from Abcam or one of our authorized distributors