

FITC Anti-TCR alpha + TCR beta antibody [H57-597] ab25010

1 References [画像数 1](#)

製品の概要

製品名	FITC Anti-TCR alpha + TCR beta antibody [H57-597]
製品の詳細	FITC Armenian hamster monoclonal [H57-597] to TCR alpha + TCR beta
由来種	Armenian hamster
標識	FITC. Ex: 493nm, Em: 528nm
特異性	Common epitope of the β chain of the mouse $\alpha\beta$ T cell receptor (TCR) complex.
アプリケーション	適用あり: Flow Cyt
種交差性	交差種: Mouse
免疫原	TCR affinity purified from T-cell hybridoma DO-11.10 (Mouse)
特記事項	<p>ab25010 can be used for in vitro stimulation of alpha beta TCR-expressing T cells and in vitro and in vivo depletion of $\alpha\beta$ TCR-bearing cells. Plate-bound or soluble ab25010 activates $\alpha\beta$ TCR bearing T cells.</p> <p>The Life Science industry has been in the grips of a reproducibility crisis for a number of years. Abcam is leading the way in addressing this with our range of recombinant monoclonal antibodies and knockout edited cell lines for gold-standard validation. Please check that this product meets your needs before purchasing.</p> <p>If you have any questions, special requirements or concerns, please send us an inquiry and/or contact our Support team ahead of purchase. Recommended alternatives for this product can be found below, along with publications, customer reviews and Q&As</p>

製品の特性

製品の状態	Liquid
保存方法	Shipped at 4°C. Store at +4°C. Do Not Freeze. Store undiluted.
バッファー	<p>pH: 7.20</p> <p>Preservative: 0.09% Sodium azide</p> <p>Constituents: 0.14% Monobasic dihydrogen sodium phosphate, 0.87% Sodium chloride, 0.1% Gelatin</p>
精製度	Affinity purified
特記事項(精製)	Purified from TCS
一次抗体 備考	ab25010 can be used for in vitro stimulation of alpha beta TCR-expressing T cells and in vitro and

in vivo depletion of αβ TCR-bearing cells. Plate-bound or soluble ab25010 activates αβ TCR bearing T cells.

ポリ/モノ
クローン名
アイソタイプ

モノクローナル
H57-597
IgG

アプリケーション

The Abpromise guarantee **Abpromise保証は、次のテスト済みアプリケーションにおけるab25010の使用に適用されます**
アプリケーションノートには、推奨の開始希釈率がありますが、適切な希釈率につきましてはご検討ください。

アプリケーション	Abreviews	特記事項
Flow Cyt		Use at an assay dependent concentration.

ターゲット情報

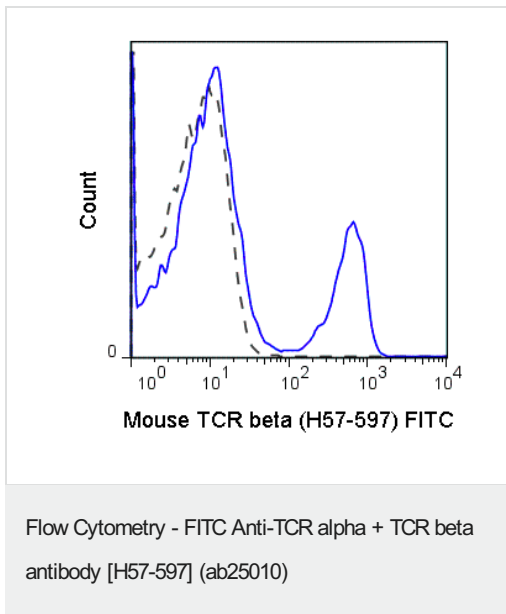
関連性

The receptors on T cells consist of immunoglobulin like integral membrane glycoproteins containing 2 polypeptide subunits, alpha and beta, of similar molecular weight, 40 to 55 kD in the human. Like the immunoglobulins of the B cells, each T cell receptor subunit has, external to the cell membrane, an N terminal variable domain and a C terminal constant domain. T cell receptors recognise foreign antigens which have been processed as small peptides and bound to major histocompatibility complex molecules at the surface of antigen presenting cells. Each T cell receptor is a dimer consisting of one alpha and one beta chain or one delta and one gamma chain. In a single cell, the T cell receptor loci are rearranged and expressed in the order delta, gamma, beta, and alpha. If both delta and gamma rearrangements produce functional chains, the cell expresses delta and gamma. If not, the cell proceeds to rearrange the beta and alpha loci.

細胞内局在

Type I membrane protein.

画像



Flow Cytometry analysis of C57Bl/6 splenocytes labeling TCR alpha + TCR beta with ab25010 at 0.25 μ g (solid line). Armenian hamster IgG (FITC) isotype control at 0.25 μ g (dashed line).

Please note: All products are "FOR RESEARCH USE ONLY. NOT FOR USE IN DIAGNOSTIC PROCEDURES"

Our Abpromise to you: Quality guaranteed and expert technical support

- Replacement or refund for products not performing as stated on the datasheet
- Valid for 12 months from date of delivery
- Response to your inquiry within 24 hours
- We provide support in Chinese, English, French, German, Japanese and Spanish
- Extensive multi-media technical resources to help you
- We investigate all quality concerns to ensure our products perform to the highest standards

If the product does not perform as described on this datasheet, we will offer a refund or replacement. For full details of the Abpromise, please visit <https://www.abcam.co.jp/abpromise> or contact our technical team.

Terms and conditions

- Guarantee only valid for products bought direct from Abcam or one of our authorized distributors