

# FITC Anti-PR3 antibody [WGM2] ab91182

**1 References** [画像数 1](#)

### 製品の概要

製品名	FITC Anti-PR3 antibody [WGM2]
製品の詳細	FITC Mouse monoclonal [WGM2] to PR3
由来種	Mouse
標識	FITC. Ex: 493nm, Em: 528nm
アプリケーション	<b>適用あり:</b> Flow Cyt (Intra)
種交差性	<b>交差種:</b> Human
免疫原	Full length protein. This information is proprietary to Abcam and/or its suppliers.
ポジティブ・コントロール	Flow Cyt (Intra): Peripheral blood lymphocytes cells.
特記事項	<p>Blocks PR3 activity and partially inhibits the binding of human PR3-ANCA to PR3.</p> <p>The Life Science industry has been in the grips of a reproducibility crisis for a number of years. Abcam is leading the way in addressing this with our range of recombinant monoclonal antibodies and knockout edited cell lines for gold-standard validation. Please check that this product meets your needs before purchasing.</p> <p>If you have any questions, special requirements or concerns, please send us an inquiry and/or contact our Support team ahead of purchase. Recommended alternatives for this product can be found below, along with publications, customer reviews and Q&amp;As</p>

### 製品の特性

製品の状態	Liquid
保存方法	Shipped at 4°C. Store at +4°C.
バッファー	Preservative: 0.02% Sodium azide Constituents: PBS, 0.1% BSA
精製度	Protein G purified
特記事項 (精製)	0.2 µm filtered antibody solution
一次抗体 備考	Blocks PR3 activity and partially inhibits the binding of human PR3-ANCA to PR3.
ポリ/モノ	モノクローナル
クローン名	WGM2

## アプリケーション

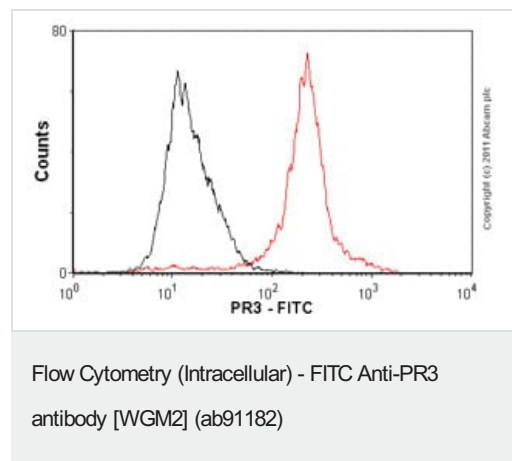
**The Abpromise guarantee** Abpromise保証は、 次のテスト済みアプリケーションにおけるab91182の使用に適用されます  
アプリケーションノートには、推奨の開始希釈率がありますが、適切な希釈率につきましてはご確認ください。

アプリケーション	Abreviews	特記事項
Flow Cyt (Intra)		Use 5µl for 10 <sup>6</sup> cells. <u>ab91356</u> - Mouse monoclonal IgG1, is suitable for use as an isotype control with this antibody.

## ターゲット情報

機能	Polymorphonuclear leukocyte serine protease that degrades elastin, fibronectin, laminin, vitronectin, and collagen types I, III, and IV (in vitro) and causes emphysema when administered by tracheal insufflation to hamsters.
配列類似性	Belongs to the peptidase S1 family. Elastase subfamily. Contains 1 peptidase S1 domain.

## 画像



Overlay histogram showing peripheral blood lymphocytes cells stained with ab91182 (red line). The cells were fixed with 4% paraformaldehyde (10 min) and then permeabilized with 0.1% PBS-Tween for 20 min. The cells were then incubated in 1x PBS / 10% normal goat serum / 0.3M glycine to block non-specific protein-protein interactions followed by the antibody (ab91182, 0.5µg/1x10<sup>6</sup> cells) for 30 min at 22°C. Isotype control antibody (black line) was mouse IgG1 (1µg/1x10<sup>6</sup> cells). Acquisition of >5,000 events was performed.

**Please note:** All products are "FOR RESEARCH USE ONLY. NOT FOR USE IN DIAGNOSTIC PROCEDURES"

## Our Abpromise to you: Quality guaranteed and expert technical support

- Replacement or refund for products not performing as stated on the datasheet
- Valid for 12 months from date of delivery
- Response to your inquiry within 24 hours
- We provide support in Chinese, English, French, German, Japanese and Spanish

- Extensive multi-media technical resources to help you
- We investigate all quality concerns to ensure our products perform to the highest standards

If the product does not perform as described on this datasheet, we will offer a refund or replacement. For full details of the Abpromise, please visit <https://www.abcam.co.jp/abpromise> or contact our technical team.

#### **Terms and conditions**

---

- Guarantee only valid for products bought direct from Abcam or one of our authorized distributors