

FITC Anti-PR3 antibody [PR3G-2] ab65255

[1 References](#) [画像数 1](#)

製品の概要

製品名	FITC Anti-PR3 antibody [PR3G-2]
製品の詳細	FITC Mouse monoclonal [PR3G-2] to PR3
由来種	Mouse
標識	FITC. Ex: 493nm, Em: 528nm
特異性	This antibody does not inhibit the biological activity of PR3.
アプリケーション	適用あり: Flow Cyt (Intra)
種交差性	交差種: Human
免疫原	Tissue/ cell preparation (Human): a crude granule extract.
ポジティブ・コントロール	Flow Cyt (Intra): THP1 cells.
特記事項	<p>The Life Science industry has been in the grips of a reproducibility crisis for a number of years. Abcam is leading the way in addressing this with our range of recombinant monoclonal antibodies and knockout edited cell lines for gold-standard validation. Please check that this product meets your needs before purchasing.</p> <p>If you have any questions, special requirements or concerns, please send us an inquiry and/or contact our Support team ahead of purchase. Recommended alternatives for this product can be found below, along with publications, customer reviews and Q&As</p>

製品の特性

製品の状態	Liquid
保存方法	Shipped at 4°C. Store at +4°C.
バッファー	Preservative: 0.02% Sodium azide Constituents: PBS, 1% BSA
精製度	Protein G purified
ポリ/モノ	モノクローナル
クローン名	PR3G-2
アイソタイプ	IgG1

アプリケーション

The Abpromise guarantee

Abpromise保証は、次のテスト済みアプリケーションにおけるab65255の使用に適用されます

アプリケーションノートには、推奨の開始希釈率がありますが、適切な希釈率につきましてはご検討ください。

アプリケーション	Abreviews	特記事項
Flow Cyt (Intra)		Use 0.5µg for 10 ⁶ cells. ab91356 - Mouse monoclonal IgG1, is suitable for use as an isotype control with this antibody.

ターゲット情報

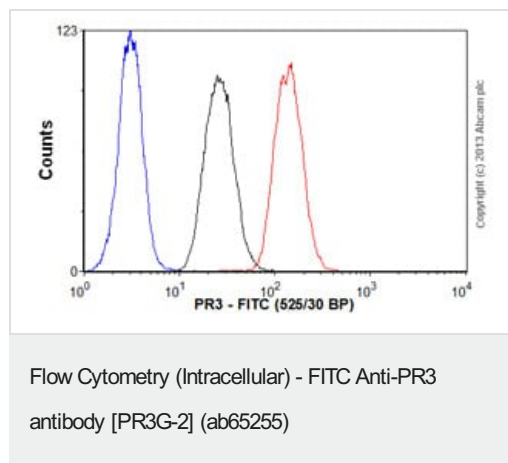
機能

Polymorphonuclear leukocyte serine protease that degrades elastin, fibronectin, laminin, vitronectin, and collagen types I, III, and IV (in vitro) and causes emphysema when administered by tracheal insufflation to hamsters.

配列類似性

Belongs to the peptidase S1 family. Elastase subfamily.
Contains 1 peptidase S1 domain.

画像



Overlay histogram showing THP1 cells stained with ab65255 (red line). The cells were fixed with 80% methanol (5 min) and then permeabilized with 0.1% PBS-Tween for 20 min. The cells were then incubated in 1x PBS / 10% normal goat serum / 0.3M glycine to block non-specific protein-protein interactions followed by the antibody (ab65255, 0.5µg/1x10⁶ cells) for 30 min at 22°C. Isotype control antibody (black line) was mouse IgG1 [MOPC-21] (FITC) (**ab18435**, 0.5µg/1x10⁶ cells) used under the same conditions. Unlabelled sample (blue line). Acquisition of >5,000 events were collected using a 20mW Argon ion laser (488nm) and 525/30 bandpass filter.

Please note: All products are "FOR RESEARCH USE ONLY. NOT FOR USE IN DIAGNOSTIC PROCEDURES"

Our Abpromise to you: Quality guaranteed and expert technical support

- Replacement or refund for products not performing as stated on the datasheet
- Valid for 12 months from date of delivery
- Response to your inquiry within 24 hours
- We provide support in Chinese, English, French, German, Japanese and Spanish
- Extensive multi-media technical resources to help you
- We investigate all quality concerns to ensure our products perform to the highest standards

If the product does not perform as described on this datasheet, we will offer a refund or replacement. For full details of the Abpromise,

please visit <https://www.abcam.co.jp/abpromise> or contact our technical team.

Terms and conditions

- Guarantee only valid for products bought direct from Abcam or one of our authorized distributors