

FITC Anti-PD1 antibody [RMP1-30] ab93579

画像数 1

製品の概要

製品名	FITC Anti-PD1 antibody [RMP1-30]
製品の詳細	FITC Rat monoclonal [RMP1-30] to PD1
由来種	Rat
標識	FITC. Ex: 493nm, Em: 528nm
アプリケーション	適用あり: Flow Cyt
種交差性	交差種: Mouse
免疫原	Tissue, cells or virus corresponding to Mouse PD1. Mouse PD1 transfected BHK cells 2
ポジティブ・コントロール	3-day ConA activated BALB/c splenocytes
特記事項	

ab93579 does not block the binding of either B7-H1-Ig or B7-DC-Ig to PD-1 transfectants.

The Life Science industry has been in the grips of a reproducibility crisis for a number of years. Abcam is leading the way in addressing this with our range of recombinant monoclonal antibodies and knockout edited cell lines for gold-standard validation. Please check that this product meets your needs before purchasing.

If you have any questions, special requirements or concerns, please send us an inquiry and/or contact our Support team ahead of purchase. Recommended alternatives for this product can be found below, along with publications, customer reviews and Q&As

製品の特性

製品の状態	Liquid
保存方法	Shipped at 4°C. Store at +4°C.
バッファー	pH: 7.20 Preservative: 0.09% Sodium azide Constituents: 0.87% Sodium chloride, PBS
精製度	Protein G purified
一次抗体 備考	ab93579 does not block the binding of either B7-H1-Ig or B7-DC-Ig to PD-1 transfectants.
ポリ/モノ	モノクローナル
クローン名	RMP1-30

アイソタイプ IgG2b
 軽鎖の種類 kappa

アプリケーション

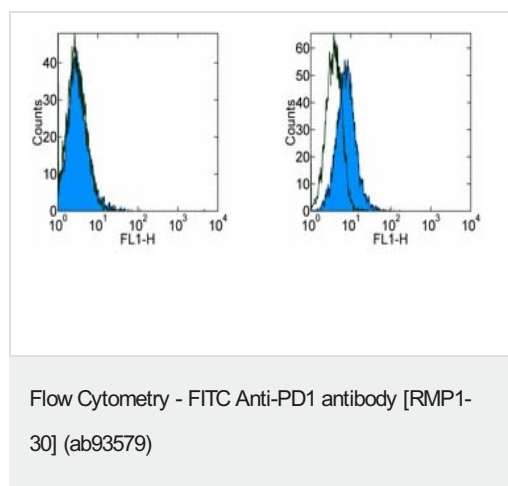
The Abpromise guarantee **Abpromise保証は、** 次のテスト済みアプリケーションにおけるab93579の使用に適用されます
 アプリケーションノートには、推奨の開始希釈率がありますが、適切な希釈率につきましてはご検討ください。

アプリケーション	Abreviews	特記事項
Flow Cyt		Use 0.5µg for 10 ⁵⁻⁸ cells. Use 0.5µg for 10 ⁵⁻⁸ cells in 100µl.

ターゲット情報

機能 Possible cell death inducer, in association with other factors.
関連疾患 Genetic variation in PDCD1 is associated with susceptibility to systemic lupus erythematosus type 2 (SLEB2) [MIM:605218]. Systemic lupus erythematosus is a chronic, inflammatory and often febrile multisystemic disorder of connective tissue. It affects principally the skin, joints, kidneys and serosal membranes. It is thought to represent a failure of the regulatory mechanisms of the autoimmune system.
配列類似性 Contains 1 Ig-like V-type (immunoglobulin-like) domain.
発生段階 Induced at programmed cell death.
細胞内局在 Membrane.

画像



Staining of 3-day unstimulated (left) and 3-day ConA activated (right) BALB/c splenocytes with 0.25 µg of FITC Rat IgG2b isotype control (open histogram), or 0.25 µg of ab93579 (colored histogram). Total viable cells were used for analysis.

Please note: All products are "FOR RESEARCH USE ONLY. NOT FOR USE IN DIAGNOSTIC PROCEDURES"

Our Abpromise to you: Quality guaranteed and expert technical support

- Replacement or refund for products not performing as stated on the datasheet
- Valid for 12 months from date of delivery
- Response to your inquiry within 24 hours

- We provide support in Chinese, English, French, German, Japanese and Spanish
- Extensive multi-media technical resources to help you
- We investigate all quality concerns to ensure our products perform to the highest standards

If the product does not perform as described on this datasheet, we will offer a refund or replacement. For full details of the Abpromise, please visit <https://www.abcam.co.jp/abpromise> or contact our technical team.

Terms and conditions

- Guarantee only valid for products bought direct from Abcam or one of our authorized distributors