

FITC Anti-MHC class II I E kappa antibody [14-4-4S] ab25023

1 References [画像数 1](#)

製品の概要

製品名	FITC Anti-MHC class II I E kappa antibody [14-4-4S]
製品の詳細	FITC Mouse monoclonal [14-4-4S] to MHC class II I E kappa
由来種	Mouse
標識	FITC. Ex: 493nm, Em: 528nm
特異性	ab25023 recognises MHC class II I E kappa alloantigen on cells from mice of the H-2d, H-2p, and H-2r haplotypes. It cross reacts with alloantigen RT1D. Cells from mice of the H-2b, H-2f, H-2q, and H-2s haplotypes do not express this antigen.
アプリケーション	適用あり: Flow Cyt
種交差性	交差種: Mouse
免疫原	Tissue, cells or virus corresponding to Mouse MHC class II I E kappa. C3H mouse skin graft and splenocytes
特記事項	<p>The Life Science industry has been in the grips of a reproducibility crisis for a number of years. Abcam is leading the way in addressing this with our range of recombinant monoclonal antibodies and knockout edited cell lines for gold-standard validation. Please check that this product meets your needs before purchasing.</p> <p>If you have any questions, special requirements or concerns, please send us an inquiry and/or contact our Support team ahead of purchase. Recommended alternatives for this product can be found below, along with publications, customer reviews and Q&As</p>

製品の特性

製品の状態	Liquid
保存方法	Shipped at 4°C. Store at +4°C. Store In the Dark.
バッファー	<p>pH: 7.4</p> <p>Preservative: 0.1% Sodium azide</p> <p>Constituent: PBS</p>
精製度	Affinity purified
ポリ/モノ	モノクローナル
クローン名	14-4-4S
アイソタイプ	IgG2a

アプリケーション

The Abpromise guarantee **Abpromise保証は、次のテスト済みアプリケーションにおけるab25023の使用に適用されます**
アプリケーションノートには、推奨の開始希釈率がありますが、適切な希釈率につきましてはご確認ください。

アプリケーション	Abreviews	特記事項
Flow Cyt		

追加情報

BL: Use at an assay dependent dilution for in vitro blocking of antigen presentation.
Flow Cyt: Use 1µg for 10⁶ cells.
FuncS: Use at an assay dependent dilution for complement dependent cytotoxicity studies and in vitro induction of antigen specific B cell differentiation.
IHC-Fr: Use at an assay dependent dilution.
IP: Use at an assay dependent dilution.

Not yet tested in other applications.
Optimal dilutions/concentrations should be determined by the end user.

ターゲット情報

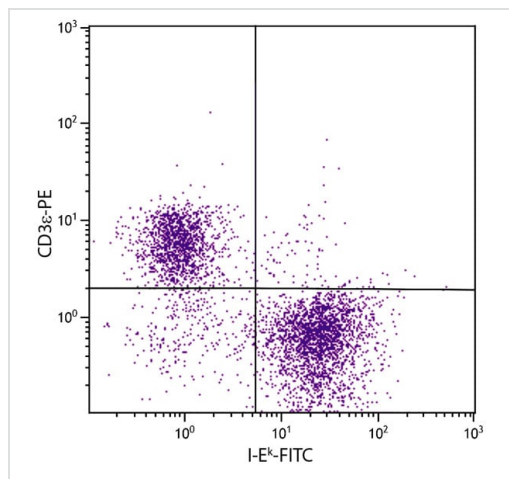
関連性

A major histocompatibility complex class II receptor. These display processed antigens from virally infected or transformed cells. Class II positive cells ('antigen presenting cells') can take up antigens from outside by endocytosis, degrade them into small peptides, and re export the peptides (now bound to MHC class II protein) to the cell surface. These peptide MHC class II complexes can then be recognized by specific CD4+ lymphocytes.

細胞内局在

Type I membrane protein

画像



Flow Cytometry - FITC Anti-MHC class II I E kappa antibody [14-4-4S] (ab25023)

Flow cytometry analysis staining MHC class II I E kappa in mouse splenocytes using ab25023 at a dilution of 1 ug/10⁶ cells.

Please note: All products are "FOR RESEARCH USE ONLY. NOT FOR USE IN DIAGNOSTIC PROCEDURES"

Our Abpromise to you: Quality guaranteed and expert technical support

- Replacement or refund for products not performing as stated on the datasheet
- Valid for 12 months from date of delivery
- Response to your inquiry within 24 hours
- We provide support in Chinese, English, French, German, Japanese and Spanish
- Extensive multi-media technical resources to help you
- We investigate all quality concerns to ensure our products perform to the highest standards

If the product does not perform as described on this datasheet, we will offer a refund or replacement. For full details of the Abpromise, please visit <https://www.abcam.co.jp/abpromise> or contact our technical team.

Terms and conditions

- Guarantee only valid for products bought direct from Abcam or one of our authorized distributors