

# FITC Anti-MHC class I antibody [34-1-2S] ab95572

**3 References** [画像数 1](#)

### 製品の概要

---

製品名	FITC Anti-MHC class I antibody [34-1-2S]
製品の詳細	FITC Mouse monoclonal [34-1-2S] to MHC class I
由来種	Mouse
標識	FITC. Ex: 493nm, Em: 528nm
特異性	ab95572 reacts with the mouse MHC class I, H-2Kd and H-2Dd. This cytotoxic antibody also cross reacts with K b,s,r,q,p
アプリケーション	<b>適用あり:</b> Flow Cyt
種交差性	<b>交差種:</b> Mouse
免疫原	Tissue, cells or virus corresponding to Mouse MHC class I. C3H.SW Mouse splenocytes
ポジティブ・コントロール	Mouse splenocytes
特記事項	<p>The Life Science industry has been in the grips of a reproducibility crisis for a number of years. Abcam is leading the way in addressing this with our range of recombinant monoclonal antibodies and knockout edited cell lines for gold-standard validation. Please check that this product meets your needs before purchasing.</p> <p>If you have any questions, special requirements or concerns, please send us an inquiry and/or contact our Support team ahead of purchase. Recommended alternatives for this product can be found below, along with publications, customer reviews and Q&amp;As</p>

### 製品の特性

---

製品の状態	Liquid
保存方法	Shipped at 4°C. Store at +4°C.
バッファー	pH: 7.20 Preservative: 0.09% Sodium azide Constituents: 0.87% Sodium chloride, PBS
精製度	Protein G purified
ポリ/モノ	モノクローナル
クローン名	34-1-2S
アイソタイプ	IgG2a
軽鎖の種類	kappa

## アプリケーション

**The Abpromise guarantee** **Abpromise保証は、次のテスト済みアプリケーションにおけるab95572の使用に適用されます**  
アプリケーションノートには、推奨の開始希釈率がありますが、適切な希釈率につきましてはご確認ください。

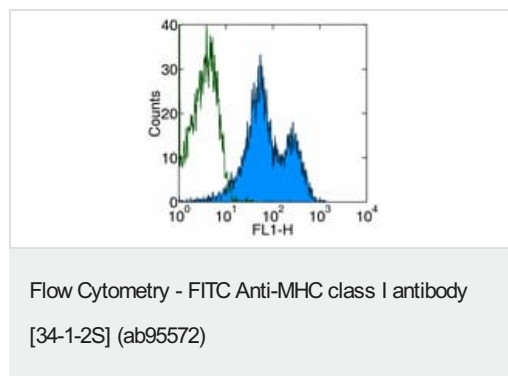
アプリケーション	Abreviews	特記事項
Flow Cyt		Use 1µg for 10 <sup>5-8</sup> cells. Staining the cell sample in a final volume of 100 µL is recommended.

## ターゲット情報

**関連性** MHC Class I molecules play a central role in the immune system by presenting peptides derived from the endoplasmic reticulum lumen. MHC class I antigens are heterodimers consisting of one alpha chain (44kDa) with beta 2 microglobulin (11.5 kDa). The antigen is expressed by all somatic cells at varying levels. MHC Class I molecules are expressed on most nucleated cells where they present endogenously synthesized antigenic peptides to CD8+ T lymphocytes, which are usually cytotoxic T cells. Fibroblasts or neurons however only show a low level of antigen.

**細胞内局在** Cell Membrane; Type I membrane protein.

## 画像



Flow cytometric analysis of Mouse splenocytes labelled with ab95572 at 1 µg/test (blue histogram) or with an isotype control (open histogram).

**Please note:** All products are "FOR RESEARCH USE ONLY. NOT FOR USE IN DIAGNOSTIC PROCEDURES"

## Our Abpromise to you: Quality guaranteed and expert technical support

- Replacement or refund for products not performing as stated on the datasheet
- Valid for 12 months from date of delivery
- Response to your inquiry within 24 hours

- We provide support in Chinese, English, French, German, Japanese and Spanish
- Extensive multi-media technical resources to help you
- We investigate all quality concerns to ensure our products perform to the highest standards

If the product does not perform as described on this datasheet, we will offer a refund or replacement. For full details of the Abpromise, please visit <https://www.abcam.co.jp/abpromise> or contact our technical team.

### **Terms and conditions**

---

- Guarantee only valid for products bought direct from Abcam or one of our authorized distributors