

FITC Anti-Methylated Lysine antibody ab53527

★★★★★ [1 Abreviews](#) [画像数 1](#)

製品の概要

製品名	FITC Anti-Methylated Lysine antibody
製品の詳細	FITC Rabbit polyclonal to Methylated Lysine
由来種	Rabbit
標識	FITC. Ex: 493nm, Em: 528nm
特異性	This antibody recognizes proteins methylated on lysine residues (mono and di-methyllysine). It does not cross-react with acetylated proteins. Cross-reactivity to trimethyllysine has not been tested.
アプリケーション	適用あり: ICC/IF
種交差性	交差種: Species independent
免疫原	Chemical/ Small Molecule corresponding to Methylated Lysine conjugated to keyhole limpet haemocyanin. Methylated protein(s) conjugated to KLH.
ポジティブ・コントロール	Human melanoma cells (MMRU).
特記事項	<p>FITC/Ab molar ratio: approximately 10:1</p> <p>The Life Science industry has been in the grips of a reproducibility crisis for a number of years. Abcam is leading the way in addressing this with our range of recombinant monoclonal antibodies and knockout edited cell lines for gold-standard validation. Please check that this product meets your needs before purchasing.</p> <p>If you have any questions, special requirements or concerns, please send us an inquiry and/or contact our Support team ahead of purchase. Recommended alternatives for this product can be found below, along with publications, customer reviews and Q&As</p>

製品の特性

製品の状態	Liquid
保存方法	Shipped at 4°C. Store at +4°C.
バッファー	pH: 6 Constituents: 50% Glycerol (glycerin, glycerine), PBS
精製度	Immunogen affinity purified
特記事項 (精製)	This antibody was affinity purified using N epsilon-monomethyllysine and dimethyllysine on Agarose as an affinity matrix.

ポリ/モノ
アイソタイプ

ポリクローナル
IgG

アプリケーション

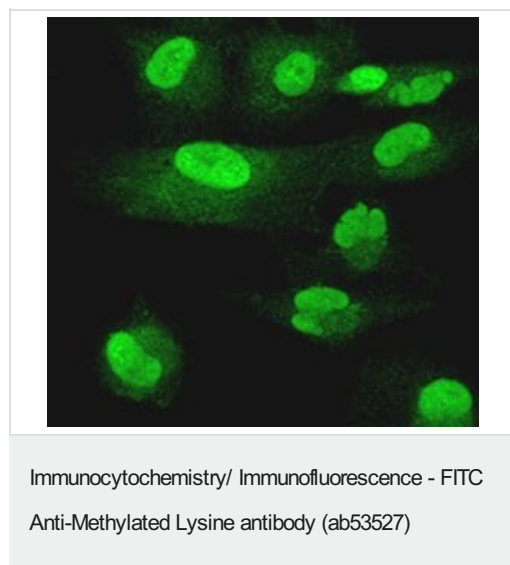
The Abpromise guarantee **Abpromise保証は、** 次のテスト済みアプリケーションにおけるab53527の使用に適用されます
アプリケーションノートには、推奨の開始希釈率がありますが、適切な希釈率につきましてはご検討ください。

アプリケーション	Abreviews	特記事項
ICC/IF		1/50 - 1/100.

ターゲット情報

関連性 Many proteins are post translationally modified. Modifications such as phosphorylation, glycosylation, ubiquitination and methylation have been shown to play an important role in the development, physiology and disease of animals and plants. Histone lysine methylation is regarded as a very stable modification with important functions in epigenetic gene control and for organizing chromatin domains.

画像



This image shows human melanoma (MMRU) cells stained with ab53527 at 1/50 dilution.

Please note: All products are "FOR RESEARCH USE ONLY. NOT FOR USE IN DIAGNOSTIC PROCEDURES"

Our Abpromise to you: Quality guaranteed and expert technical support

- Replacement or refund for products not performing as stated on the datasheet
- Valid for 12 months from date of delivery
- Response to your inquiry within 24 hours

- We provide support in Chinese, English, French, German, Japanese and Spanish
- Extensive multi-media technical resources to help you
- We investigate all quality concerns to ensure our products perform to the highest standards

If the product does not perform as described on this datasheet, we will offer a refund or replacement. For full details of the Abpromise, please visit <https://www.abcam.co.jp/abpromise> or contact our technical team.

Terms and conditions

- Guarantee only valid for products bought direct from Abcam or one of our authorized distributors