

FITC Anti-Ly6g antibody [RB6-8C5] ab25024

★★★★★ [6 Abreviews](#) [19 References](#) [画像数 4](#)

製品の概要

製品名	FITC Anti-Ly6g antibody [RB6-8C5]
製品の詳細	FITC Rat monoclonal [RB6-8C5] to Ly6g
由来種	Rat
標識	FITC. Ex: 493nm, Em: 528nm
特異性	ab25024 recognises mouse Mouse Ly-6G.
アプリケーション	適用あり: Flow Cyt
種交差性	交差種: Mouse
免疫原	Tissue, cells or virus corresponding to Ly6g. Mouse granulocytes
ポジティブ・コントロール	Rat IgG2b (FITC) isotype control
特記事項	<p>The Life Science industry has been in the grips of a reproducibility crisis for a number of years. Abcam is leading the way in addressing this with our range of recombinant monoclonal antibodies and knockout edited cell lines for gold-standard validation. Please check that this product meets your needs before purchasing.</p> <p>If you have any questions, special requirements or concerns, please send us an inquiry and/or contact our Support team ahead of purchase. Recommended alternatives for this product can be found below, along with publications, customer reviews and Q&As</p>

製品の特性

製品の状態	Liquid
保存方法	Shipped at 4°C. Store at +4°C.
バッファー	<p>pH: 7.20</p> <p>Preservative: 0.09% Sodium azide</p> <p>Constituents: 0.14% Monobasic dihydrogen sodium phosphate, 0.87% Sodium chloride, 0.1% Gelatin</p>
精製度	Affinity purified
ポリ/モノ	モノクローナル
クローン名	RB6-8C5
アイソタイプ	IgG2b
軽鎖の種類	kappa

アプリケーション

The Abpromise guarantee **Abpromise保証は、次のテスト済みアプリケーションにおけるab25024の使用に適用されます**
アプリケーションノートには、推奨の開始希釈率がありますが、適切な希釈率につきましてはご確認ください。

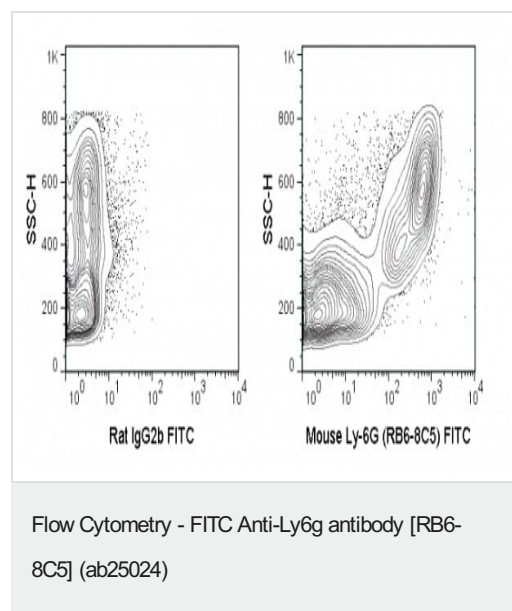
アプリケーション	Abreviews	特記事項
Flow Cyt	★★★★★ (5)	1/100. ab136125 - Rat monoclonal IgG2b, is suitable for use as an isotype control with this antibody.

ターゲット情報

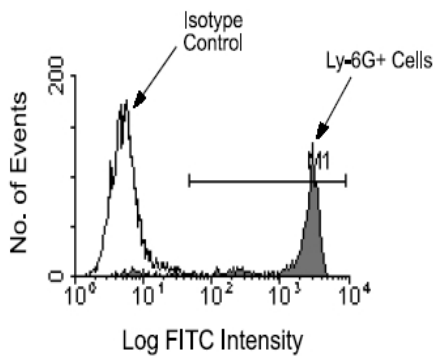
関連性 Ly6G is a GPI-anchored protein, that is also known as the myeloid differentiation antigen Gr1. The antigen is transiently expressed on monocytes in the bone marrow. The level of antigen expression in the bone marrow directly correlates with granulocyte differentiation and maturation. Ly6G is expressed predominantly on neutrophils, also in a subset of eosinophils, differentiating pre-monocytes, and plasmacytoid dendritic cells.

細胞内局在 Attached to the membrane by a GPI-anchor.

画像

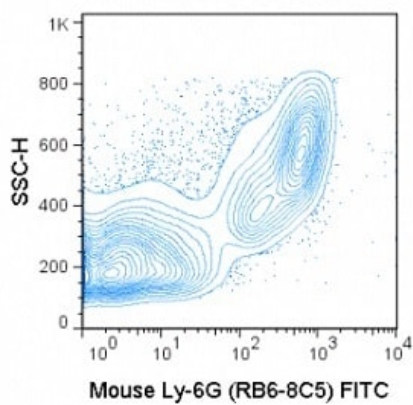


Flow Cytometry analysis of C57Bl/6 bone marrow cells labeling Ly6g with ab25024 0.5µg (right panel), Rat IgG2b (FITC) isotype control at 0.5µg (left panel).



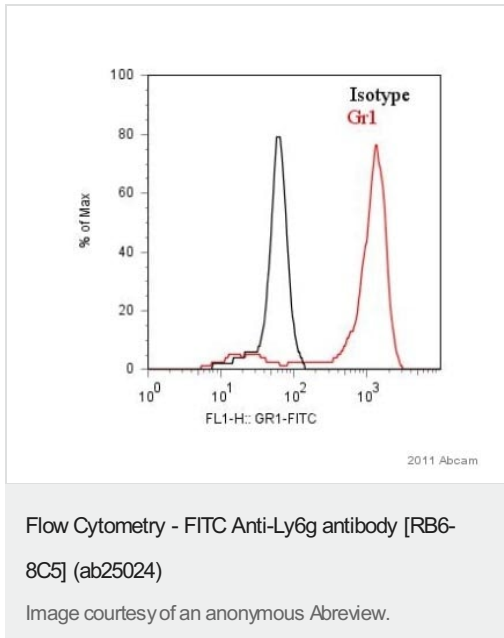
Flow Cytometry - FITC Anti-Ly6g antibody [RB6-8C5] (ab25024)

BALB/c bone marrow cells were stained with either rat IgG2b-FITC (as an isotype control) or rat anti-mouse Ly-6G-FITC (ab25024) at a concentration of $1\mu\text{g}/10^6$ cells. Large cells were then gated and analyzed on a flow cytometer.



Flow Cytometry - FITC Anti-Ly6g antibody [RB6-8C5] (ab25024)

Flow Cytometry analysis of C57Bl/6 bone marrow cells labeling Ly6g with ab25024 at $0.5\mu\text{g}$.



ab25024 at a 1/100 dilution detecting Ly6g (Gr1) in murine blood cells by Flow Cytometry. Gating strategy was for monocytes.

Please note: All products are "FOR RESEARCH USE ONLY. NOT FOR USE IN DIAGNOSTIC PROCEDURES"

Our Abpromise to you: Quality guaranteed and expert technical support

- Replacement or refund for products not performing as stated on the datasheet
- Valid for 12 months from date of delivery
- Response to your inquiry within 24 hours
- We provide support in Chinese, English, French, German, Japanese and Spanish
- Extensive multi-media technical resources to help you
- We investigate all quality concerns to ensure our products perform to the highest standards

If the product does not perform as described on this datasheet, we will offer a refund or replacement. For full details of the Abpromise, please visit <https://www.abcam.co.jp/abpromise> or contact our technical team.

Terms and conditions

- Guarantee only valid for products bought direct from Abcam or one of our authorized distributors