

FITC Anti-LLGL1 antibody [4D11] ab95802

3 References [画像数 1](#)

製品の概要

製品名	FITC Anti-LLGL1 antibody [4D11]
製品の詳細	FITC Rat monoclonal [4D11] to LLGL1
由来種	Rat
標識	FITC. Ex: 493nm, Em: 528nm
アプリケーション	適用あり: Flow Cyt
種交差性	交差種: Mouse
免疫原	Tissue, cells or virus corresponding to Mouse LLGL1. Large granular lymphocytes (LGL) enriched from C57BL/6N mouse liver
ポジティブ・コントロール	Mouse splenocytes.
特記事項	<p>The Life Science industry has been in the grips of a reproducibility crisis for a number of years. Abcam is leading the way in addressing this with our range of recombinant monoclonal antibodies and knockout edited cell lines for gold-standard validation. Please check that this product meets your needs before purchasing.</p> <p>If you have any questions, special requirements or concerns, please send us an inquiry and/or contact our Support team ahead of purchase. Recommended alternatives for this product can be found below, along with publications, customer reviews and Q&As</p>

製品の特性

製品の状態	Liquid
保存方法	Shipped at 4°C. Store at +4°C.
バッファー	<p>pH: 7.20</p> <p>Preservative: 0.09% Sodium azide</p> <p>Constituent: PBS</p>
精製度	Protein G purified
ポリ/モノ	モノクローナル
クローン名	4D11
アイソタイプ	IgG2a
軽鎖の種類	kappa

アプリケーション

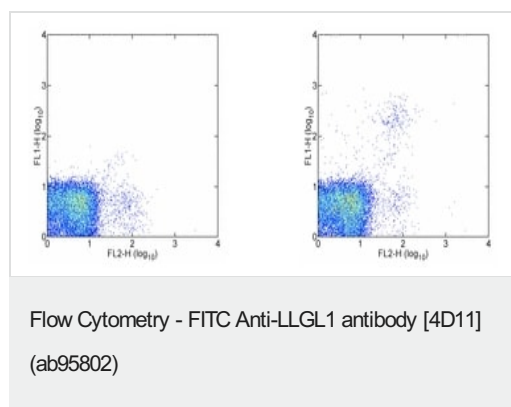
The Abpromise guarantee **Abpromise保証は、次のテスト済みアプリケーションにおけるab95802の使用に適用されます**
アプリケーションノートには、推奨の開始希釈率がありますが、適切な希釈率につきましてはご検討ください。

アプリケーション	Abreviews	特記事項
Flow Cyt		Use 0.125-0.25µg for 10 ⁵⁻⁸ cells. Perform staining in a final volume of 100 µl. ab18446 - Rat monoclonal IgG2a, is suitable for use as an isotype control with this antibody.

ターゲット情報

機能	Cortical cytoskeleton protein found in a complex involved in maintaining cell polarity and epithelial integrity. Involved in the regulation of mitotic spindle orientation, proliferation, differentiation and tissue organization of neuroepithelial cells.
組織特異性	Expressed in brain, kidney, and muscle but is barely seen in heart and placenta. Down-regulated or lost in all cell lines and in most of the tumor samples analyzed. Loss was associated with advanced stage of the disease.
配列類似性	Belongs to the WD repeat L(2)GL family. Contains 14 WD repeats.
翻訳後修飾	Phosphorylated upon DNA damage, probably by ATM or ATR (By similarity). Phosphorylated at least at Ser-663 by PRKCI.
細胞内局在	Cytoplasm > cytoskeleton. Localized to the lateral membrane during the polarization and formation cell-cell contacts.

画像



Staining of C57BL/6 splenocytes with Anti-Mouse CD49b (Integrin alpha2) PE and 0.125 µg of Rat IgG2a k Isotype Control FITC (left) or 0.125 µg of ab95802 (right). Total viable cells were used for analysis.

Please note: All products are "FOR RESEARCH USE ONLY. NOT FOR USE IN DIAGNOSTIC PROCEDURES"

Our Abpromise to you: Quality guaranteed and expert technical support

- Replacement or refund for products not performing as stated on the datasheet
- Valid for 12 months from date of delivery
- Response to your inquiry within 24 hours
- We provide support in Chinese, English, French, German, Japanese and Spanish
- Extensive multi-media technical resources to help you
- We investigate all quality concerns to ensure our products perform to the highest standards

If the product does not perform as described on this datasheet, we will offer a refund or replacement. For full details of the Abpromise, please visit <https://www.abcam.co.jp/abpromise> or contact our technical team.

Terms and conditions

- Guarantee only valid for products bought direct from Abcam or one of our authorized distributors