

FITC Anti-Integrin beta 4 antibody [450-9D] ab22486

3 References [画像数 1](#)

製品の概要

製品名	FITC Anti-Integrin beta 4 antibody [450-9D]
製品の詳細	FITC Mouse monoclonal [450-9D] to Integrin beta 4
由来種	Mouse
標識	FITC. Ex: 493nm, Em: 528nm
特異性	ab22486 recognises the integrin beta 4 expressed on epithelial cells, Schwann cells and various tumour cell lines.
アプリケーション	適用あり: IHC-Fr
種交差性	交差種: Human
免疫原	Full length native protein (purified) (Human): Purified a6b4 integrin from A431 cells
エピトープ	the epitope is in the extracellular region of Integrin beta 4
ポジティブ・コントロール	Human tonsil
特記事項	<p>The Life Science industry has been in the grips of a reproducibility crisis for a number of years. Abcam is leading the way in addressing this with our range of recombinant monoclonal antibodies and knockout edited cell lines for gold-standard validation. Please check that this product meets your needs before purchasing.</p> <p>If you have any questions, special requirements or concerns, please send us an inquiry and/or contact our Support team ahead of purchase. Recommended alternatives for this product can be found below, along with publications, customer reviews and Q&As</p>

製品の特性

製品の状態	Liquid
保存方法	Shipped at 4°C. Store at +4°C short term (1-2 weeks). Upon delivery aliquot. Store at -20°C or -80°C. Avoid freeze / thaw cycle.
バッファー	<p>pH: 7.40</p> <p>Preservative: 0.1% Sodium azide</p> <p>Constituents: PBS, 1% BSA</p>
精製度	Protein G purified
特記事項 (精製)	ab22486 has been purified by affinity chromatography on Protein G from tissue culture supernatant.

ポリ/モノ	モノクローナル
クローン名	450-9D
ミエローマ	Sp2/0
アイソタイプ	IgG1

アプリケーション

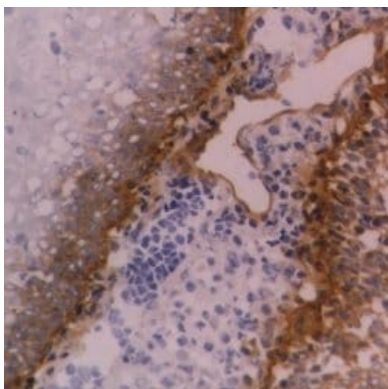
The Abpromise guarantee **Abpromise保証は、次のテスト済みアプリケーションにおけるab22486の使用に適用されます**
 アプリケーションノートには、推奨の開始希釈率がありますが、適切な希釈率につきましてはご確認ください。

アプリケーション	Abreviews	特記事項
IHC-Fr		Use at an assay dependent concentration.

ターゲット情報

機能	Integrin alpha-6/beta-4 is a receptor for laminin. It plays a critical structural role in the hemidesmosome of epithelial cells.
組織特異性	Integrin alpha-6/beta-4 is predominantly expressed by epithelia. Isoform beta-4D is also expressed in colon and placenta. Isoform beta-4E is also expressed in epidermis, lung, duodenum, heart, spleen and stomach.
関連疾患	Defects in ITGB4 are a cause of epidermolysis bullosa letalis with pyloric atresia (EB-PA) [MIM:226730]; also known as junctional epidermolysis bullosa with pyloric atresia (PA-JEB) or aplasia cutis congenita with gastrointestinal atresia. EB-PA is an autosomal recessive, frequently lethal, epidermolysis bullosa with variable involvement of skin, nails, mucosa, and with variable effects on the digestive system. It is characterized by mucocutaneous fragility, aplasia cutis congenita, and gastrointestinal atresia, which most commonly affects the pylorus. Pyloric atresia is a primary manifestation rather than a scarring process secondary to epidermolysis bullosa. Defects in ITGB4 are a cause of generalized atrophic benign epidermolysis bullosa (GABEB) [MIM:226650]. GABEB is a non-lethal, adult form of junctional epidermolysis bullosa characterized by life-long blistering of the skin, associated with hair and tooth abnormalities.
配列類似性	Belongs to the integrin beta chain family. Contains 1 Calx-beta domain. Contains 4 fibronectin type-III domains. Contains 1 PSI domain. Contains 1 VWFA domain.
ドメイン	The fibronectin type-III-like domains bind BPAG1 and plectin and probably also recruit BP230.
細胞内局在	Membrane.

画像



Immunohistochemistry (Frozen sections) analysis of human tonsil tissue section labeling Integrin beta 4 with ab22486.

Immunohistochemistry (Frozen sections) - FITC
Anti-Integrin beta 4 antibody [450-9D] (ab22486)

Please note: All products are "FOR RESEARCH USE ONLY. NOT FOR USE IN DIAGNOSTIC PROCEDURES"

Our Abpromise to you: Quality guaranteed and expert technical support

- Replacement or refund for products not performing as stated on the datasheet
- Valid for 12 months from date of delivery
- Response to your inquiry within 24 hours
- We provide support in Chinese, English, French, German, Japanese and Spanish
- Extensive multi-media technical resources to help you
- We investigate all quality concerns to ensure our products perform to the highest standards

If the product does not perform as described on this datasheet, we will offer a refund or replacement. For full details of the Abpromise, please visit <https://www.abcam.co.jp/abpromise> or contact our technical team.

Terms and conditions

- Guarantee only valid for products bought direct from Abcam or one of our authorized distributors