

# FITC Anti-Integrin alpha 1 antibody [TS2/7] ab34176

**2 References**   [画像数 1](#)

### 製品の概要

製品名	FITC Anti-Integrin alpha 1 antibody [TS2/7]
製品の詳細	FITC Mouse monoclonal [TS2/7] to Integrin alpha 1
由来種	Mouse
標識	FITC. Ex: 493nm, Em: 528nm
特異性	This antibody recognises the human alpha 1 integrin subunit.
アプリケーション	<b>適用あり:</b> Flow Cyt
種交差性	<b>交差種:</b> Human
免疫原	Tissue, cells or virus corresponding to Human Integrin alpha 1. Immunogen sourced Human HLA-DR CTL line
特記事項	<p>The Life Science industry has been in the grips of a reproducibility crisis for a number of years. Abcam is leading the way in addressing this with our range of recombinant monoclonal antibodies and knockout edited cell lines for gold-standard validation. Please check that this product meets your needs before purchasing.</p> <p>If you have any questions, special requirements or concerns, please send us an inquiry and/or contact our Support team ahead of purchase. Recommended alternatives for this product can be found below, along with publications, customer reviews and Q&amp;As</p>

### 製品の特性

製品の状態	Liquid
保存方法	Shipped at 4°C. Store at +4°C.
バッファー	<p>pH: 7.40</p> <p>Preservative: 0.09% Sodium azide</p> <p>Constituents: PBS, 1% BSA</p>
精製度	Protein G purified
特記事項 (精製)	Purified IgG prepared by affinity chromatography on Protein G from tissue culture supernatant
ポリ/モノ	モノクローナル
クローン名	TS2/7
ミエローマ	NS1
アイソタイプ	IgG1

## アプリケーション

**The Abpromise guarantee** Abpromise保証は、次のテスト済みアプリケーションにおけるab34176の使用に適用されます  
アプリケーションノートには、推奨の開始希釈率がありますが、適切な希釈率につきましてはご確認ください。

アプリケーション	Abreviews	特記事項
Flow Cyt		

**追加情報** Flow Cyt: neat - 1/5. Use 10µl of the suggested working dilution to label  $10^6$  cells in 100µl.  
  
Not yet tested in other applications.  
Optimal dilutions/concentrations should be determined by the end user.

## ターゲット情報

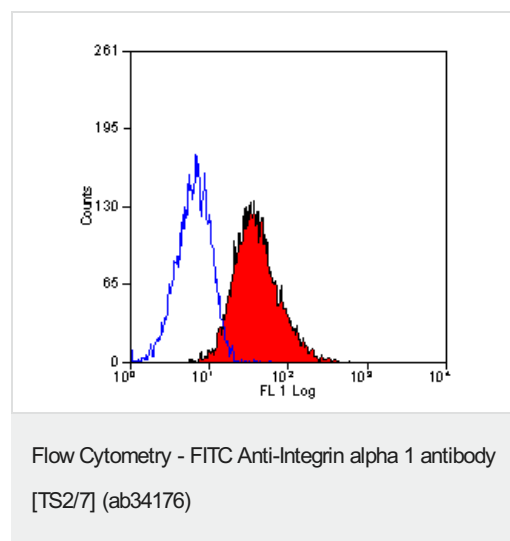
**機能** Integrin alpha-1/beta-1 is a receptor for laminin and collagen. It recognizes the proline-hydroxylated sequence G-F-P-G-E-R in collagen.

**配列類似性** Belongs to the integrin alpha chain family.  
Contains 7 FG-GAP repeats.  
Contains 1 VWFA domain.

**ドメイン** The integrin I-domain (insert) is a VWFA domain. Integrins with I-domains do not undergo protease cleavage.

**細胞内局在** Membrane.

## 画像



Flow Cytometry analysis of HeLa cells labeling Integrin alpha 1 with ab34176.

**Please note:** All products are "FOR RESEARCH USE ONLY. NOT FOR USE IN DIAGNOSTIC PROCEDURES"

### **Our Abpromise to you: Quality guaranteed and expert technical support**

---

- Replacement or refund for products not performing as stated on the datasheet
- Valid for 12 months from date of delivery
- Response to your inquiry within 24 hours
  
- We provide support in Chinese, English, French, German, Japanese and Spanish
- Extensive multi-media technical resources to help you
- We investigate all quality concerns to ensure our products perform to the highest standards

If the product does not perform as described on this datasheet, we will offer a refund or replacement. For full details of the Abpromise, please visit <https://www.abcam.co.jp/abpromise> or contact our technical team.

### **Terms and conditions**

---

- Guarantee only valid for products bought direct from Abcam or one of our authorized distributors