

### FITC Anti-HLA B7 antibody [BB7.1] ab33330

画像数 1

#### 製品の概要

---

製品名	FITC Anti-HLA B7 antibody [BB7.1]
製品の詳細	FITC Mouse monoclonal [BB7.1] to HLA B7
由来種	Mouse
標識	FITC. Ex: 493nm, Em: 528nm
特異性	This antibody recognizes the HLA B7 antigen and does not cross react with HLA B27 or other related antigens.
アプリケーション	<b>適用あり:</b> Flow Cyt
種交差性	<b>交差種:</b> Human, Cynomolgus monkey
免疫原	Full length protein corresponding to Human HLA B7. Papain solubilized HLA-B7 antigen
特記事項	<p>This antibody can be used to distinguish true HLA B27 positives from false HLA B27 positives (i.e. HLA B7 positive) in the investigation of diseases such as ankylosing spondylitis and anterior uveitis.</p> <p>The Life Science industry has been in the grips of a reproducibility crisis for a number of years. Abcam is leading the way in addressing this with our range of recombinant monoclonal antibodies and knockout edited cell lines for gold-standard validation. Please check that this product meets your needs before purchasing.</p> <p>If you have any questions, special requirements or concerns, please send us an inquiry and/or contact our Support team ahead of purchase. Recommended alternatives for this product can be found below, along with publications, customer reviews and Q&amp;As</p>

#### 製品の特性

---

製品の状態	Liquid
保存方法	Shipped at 4°C. Store at +4°C.
バッファー	pH: 7.40 Preservative: 0.09% Sodium azide Constituents: PBS, 1% BSA
精製度	Protein G purified
特記事項 (精製)	This antibody was purified from tissue culture supernatant.

## 一次抗体 備考

This antibody can be used to distinguish true HLA B27 positives from false HLA B27 positives (i.e. HLA B7 positive) in the investigation of diseases such as ankylosing spondylitis and anterior uveitis.

## ポリ/モノ

モノクローナル

## クローン名

BB7.1

## アイソタイプ

IgG1

## アプリケーション

### The Abpromise guarantee

**Abpromise保証は、次のテスト済みアプリケーションにおけるab33330の使用に適用されます**

アプリケーションノートには、推奨の開始希釈率がありますが、適切な希釈率につきましてはご検討ください。

アプリケーション	Abreviews	特記事項
Flow Cyt		1/1 - 1/10. Use 10µl of the suggested working dilution to label 10 <sup>6</sup> cells or 100µl whole blood.

## ターゲット情報

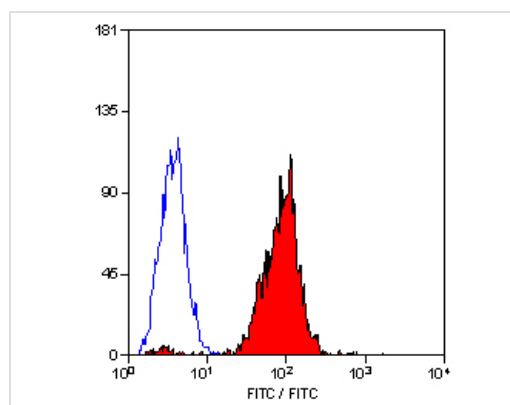
### 関連性

HLA B belongs to the HLA class I heavy chain paralogues. This class I molecule is a heterodimer consisting of a heavy chain and a light chain (beta 2 microglobulin). The heavy chain is anchored in the membrane. Class I molecules play a central role in the immune system by presenting peptides derived from the endoplasmic reticulum lumen. They are expressed in nearly all cells. The heavy chain is approximately 45 kDa. Hundreds of HLA B alleles have been described.

### 細胞内局在

Cell Membrane, single pass type I membrane protein.

## 画像



Staining of human peripheral blood lymphocytes with ab33330

Flow Cytometry - FITC Anti-HLA B7 antibody

[BB7.1] (ab33330)

**Please note:** All products are "FOR RESEARCH USE ONLY. NOT FOR USE IN DIAGNOSTIC PROCEDURES"

### **Our Abpromise to you: Quality guaranteed and expert technical support**

---

- Replacement or refund for products not performing as stated on the datasheet
- Valid for 12 months from date of delivery
- Response to your inquiry within 24 hours
- We provide support in Chinese, English, French, German, Japanese and Spanish
- Extensive multi-media technical resources to help you
- We investigate all quality concerns to ensure our products perform to the highest standards

If the product does not perform as described on this datasheet, we will offer a refund or replacement. For full details of the Abpromise, please visit <https://www.abcam.co.jp/abpromise> or contact our technical team.

### **Terms and conditions**

---

- Guarantee only valid for products bought direct from Abcam or one of our authorized distributors