

FITC Anti-Glycophorin A + B antibody [HIR2] ab52452

画像数 1

製品の概要

製品名	FITC Anti-Glycophorin A + B antibody [HIR2]
製品の詳細	FITC Mouse monoclonal [HIR2] to Glycophorin A + B
由来種	Mouse
標識	FITC. Ex: 493nm, Em: 528nm
特異性	ab52452 recognises N-terminal, homologous portion of glycophorins A (GPA) and B (GPB) which are single-pass membrane sialoglycoproteins expressed on red blood cells and erythroid precursor cells.
アプリケーション	適用あり: Flow Cyt
種交差性	交差種: Human
免疫原	Synthetic peptide corresponding to Human Glycophorin A + B (N terminal).
ポジティブ・コントロール	Flow Cyt: A subset of erythrocytes in human peripheral blood.
特記事項	<p>ab52452 agglutinates untreated RBCs but it fails to agglutinate papain-treated cells, binds to GPA, but weakly to GPB. The antibody is useful in erythroid cell development studies, because HIR2 antigen is expressed on early erythroblasts, late erythroblasts, erythroblasts, mature erythrocytes and the cells of erythroid cell lines K562 and HEL, but not on all other cells (mature erythrocytes are characteristically CD235a positive and CD45 and CD71 negative).</p> <p>The Life Science industry has been in the grips of a reproducibility crisis for a number of years. Abcam is leading the way in addressing this with our range of recombinant monoclonal antibodies and knockout edited cell lines for gold-standard validation. Please check that this product meets your needs before purchasing.</p> <p>If you have any questions, special requirements or concerns, please send us an inquiry and/or contact our Support team ahead of purchase. Recommended alternatives for this product can be found below, along with publications, customer reviews and Q&As</p>

製品の特性

製品の状態	Liquid
保存方法	Shipped at 4°C. Store at +4°C.
バッファー	<p>pH: 7.4</p> <p>Preservative: 0.097% Sodium azide</p> <p>Constituents: 0.2% BSA, PBS</p>

精製度	Protein G purified
特記事項(精製)	Prior to conjugation, ab52452 was purified by Protein G affinity chromatography. After conjugation, it was purified by site exclusion chromatography. Purity >95% by SDS-PAGE.
一次抗体 備考	ab52452 agglutinates untreated RBCs but it fails to agglutinate papain-treated cells, binds to GPA, but weakly to GPB. The antibody is useful in erythroid cell development studies, because HIR2 antigen is expressed on early erythroblasts, late erythroblasts, erythroblasts, mature erythrocytes and the cells of erythroid cell lines K562 and HEL, but not on all other cells (mature erythrocytes are characteristically CD235a positive and CD45 and CD71 negative).
ポリ/モノ	モノクローナル
クローン名	HIR2
アイソタイプ	IgG2b

アプリケーション

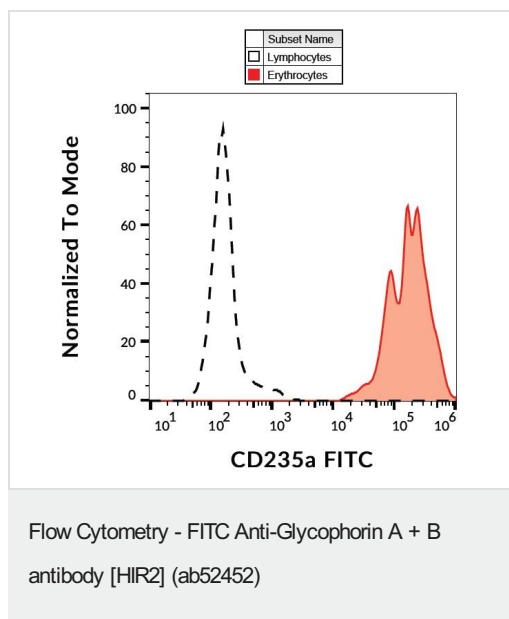
The Abpromise guarantee **Abpromise保証は、次のテスト済みアプリケーションにおけるab52452の使用に適用されます**
 アプリケーションノートには、推奨の開始希釈率がありますが、適切な希釈率につきましてはご検討ください。

アプリケーション	Abreviews	特記事項
Flow Cyt		Use at an assay dependent concentration. 20 µl reagent / 100 µl of whole blood or 10 ⁶ cells in a suspension.

ターゲット情報

関連性	Glycophorins A (GYPA) and B (GYPB) are major sialoglycoproteins of the human erythrocyte membrane which bear the antigenic determinants for the MN and Ss blood groups. GYPA gene consists of 7 exons and has 97% sequence homology with GYPB from the 5' UTR to the coding sequence encoding the first 45 amino acids. GYPB accounts for S, s and U specificities. GPA and GPB provide the cells with a large mucin-like surface and it has been suggested this provides a barrier to cell fusion, so minimizing aggregation between red blood cells in the circulation. In addition to the M or N and S or s antigens, that commonly occur in all populations, about 40 related variant phenotypes have been identified. These variants include all the variants of the Miltenberger complex and several isoforms of Sta; also, Dantu, Sat, He, Mg, and deletion variants Ena, S-s-U- and Mk. Most of the variants are resulted from gene recombinations between GYPA and GYPB. These antigens are expressed on early erythroblasts, late erythroblasts, erythroblasts, mature erythrocytes and the cells of erythroid cell lines K562 and HEL, but not on all other cells (mature erythrocytes are characteristically CD235a positive and CD45 and CD71 negative).
細胞内局在	Type I membrane protein.

画像



Flow cytometry analysis (surface staining) of human peripheral blood labeling CD235a with ab52452.

Please note: All products are "FOR RESEARCH USE ONLY. NOT FOR USE IN DIAGNOSTIC PROCEDURES"

Our Abpromise to you: Quality guaranteed and expert technical support

- Replacement or refund for products not performing as stated on the datasheet
- Valid for 12 months from date of delivery
- Response to your inquiry within 24 hours
- We provide support in Chinese, English, French, German, Japanese and Spanish
- Extensive multi-media technical resources to help you
- We investigate all quality concerns to ensure our products perform to the highest standards

If the product does not perform as described on this datasheet, we will offer a refund or replacement. For full details of the Abpromise, please visit <https://www.abcam.co.jp/abpromise> or contact our technical team.

Terms and conditions

- Guarantee only valid for products bought direct from Abcam or one of our authorized distributors