

FITC Anti-Cytokeratin 18 antibody [DC-10] ab72813

3 References [画像数 3](#)

製品の概要

製品名	FITC Anti-Cytokeratin 18 antibody [DC-10]
製品の詳細	FITC Mouse monoclonal [DC-10] to Cytokeratin 18
由来種	Mouse
標識	FITC. Ex: 493nm, Em: 528nm
アプリケーション	適用あり: ICC/IF, Flow Cyt (Intra)
種交差性	交差種: Human 非交差種: Mouse, Rat, Sheep, Hamster, Cow, Dog, Pig
免疫原	Tissue, cells or virus corresponding to Human Cytokeratin 18. Human breast carcinoma cell line PMC-42
ポジティブ・コントロール	ICC/IF: HCT116 cells. Flow Cyt (Intra): HeLa cells.
特記事項	<p>The Life Science industry has been in the grips of a reproducibility crisis for a number of years. Abcam is leading the way in addressing this with our range of recombinant monoclonal antibodies and knockout edited cell lines for gold-standard validation. Please check that this product meets your needs before purchasing.</p> <p>If you have any questions, special requirements or concerns, please send us an inquiry and/or contact our Support team ahead of purchase. Recommended alternatives for this product can be found below, along with publications, customer reviews and Q&As</p>

製品の特性

製品の状態	Liquid
保存方法	Shipped at 4°C. Store at +4°C.
バッファー	pH: 7.4 Preservative: 0.097% Sodium azide Constituent: PBS
精製度	Size exclusion
特記事項 (精製)	The purified antibody is conjugated with Fluorescein isothiocyanate (FITC) under optimum conditions. The reagent is free of unconjugated FITC.
ポリ/モノ	モノクローナル
クローン名	DC-10

アプリケーション

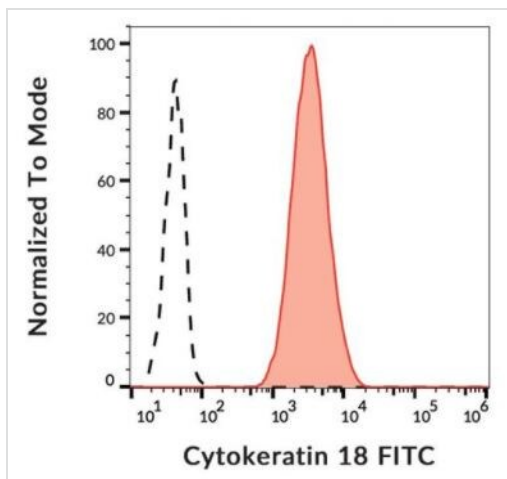
The Abpromise guarantee **Abpromise保証は、**次のテスト済みアプリケーションにおけるab72813の使用に適用されます
アプリケーションノートには、推奨の開始希釈率がありますが、適切な希釈率につきましてはご検討ください。

アプリケーション	Abreviews	特記事項
ICC/IF		Use a concentration of 1 µg/ml.
Flow Cyt (Intra)		Use a concentration of 1 - 5 µg/ml.

ターゲット情報

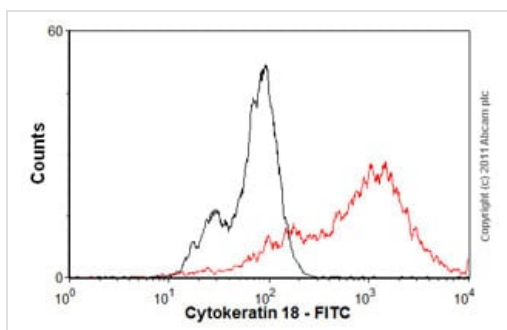
機能	Involved in the uptake of thrombin-antithrombin complexes by hepatic cells (By similarity). When phosphorylated, plays a role in filament reorganization. Involved in the delivery of mutated CFTR to the plasma membrane. Together with KRT8, is involved in interleukin-6 (IL-6)-mediated barrier protection.
組織特異性	Expressed in colon, placenta, liver and very weakly in exocervix. Increased expression observed in lymph nodes of breast carcinoma.
関連疾患	Defects in KRT18 are a cause of cirrhosis (CIRRH) [MIM:215600].
配列類似性	Belongs to the intermediate filament family.
翻訳後修飾	Phosphorylation at Ser-34 increases during mitosis. Hyperphosphorylated at Ser-53 in diseased cirrhosis liver. Phosphorylation increases by IL-6. Proteolytically cleaved by caspases during epithelial cell apoptosis. Cleavage occurs at Asp-238 by either caspase-3, caspase-6 or caspase-7. O-glycosylated at multiple sites; glycans consist of single N-acetylglucosamine residues.
細胞内局在	Cytoplasm > perinuclear region.

画像



Flow Cytometry (Intracellular) - FITC Anti-Cytokeratin 18 antibody [DC-10] (ab72813)

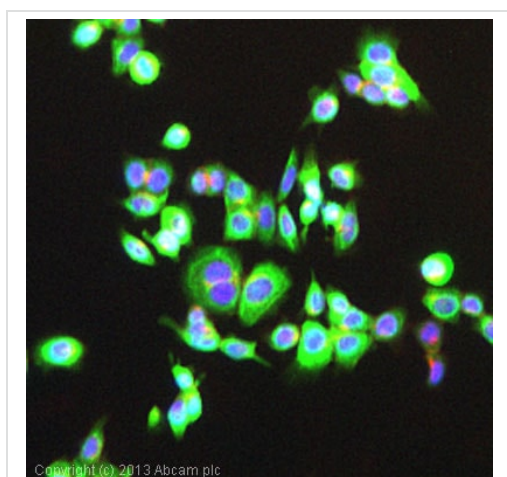
Flow cytometry analysis (intracellular staining) of HeLa cells with ab72813 at 5 µg/ml.



Flow Cytometry (Intracellular) - FITC Anti-Cytokeratin 18 antibody [DC-10] (ab72813)

Overlay histogram showing MCF-7 cells stained with ab72813 (red line). The cells were fixed with 4% paraformaldehyde (10 min) and then permeabilized with 0.1% PBS-Tween for 20 min. The cells were then incubated in 1x PBS / 10% normal goat serum / 0.3M glycine to block non-specific protein-protein interactions followed by the antibody (ab72813, 0.5µg/1x10⁶ cells) for 30 min at 22°C.

Isotype control antibody (black line) was mouse IgG1 (FITC) (2µg/1x10⁶ cells) for 30 min at 22°C. Acquisition of >5,000 events was performed.



Immunocytochemistry/ Immunofluorescence - FITC Anti-Cytokeratin 18 antibody [DC-10] (ab72813)

ICC/IF image of ab72813 stained HCT116 cells. The cells were 4% formaldehyde fixed (10 min) and then incubated in 1%BSA / 10% normal goat serum / 0.3M glycine in 0.1% PBS-Tween for 1h to permeabilise the cells and block non-specific protein-protein interactions. The cells were then incubated with the antibody (ab72813, 1µg/ml) overnight at +4°C. Alexa Fluor® 594 WGA was used to label plasma membranes (red) at a 1/200 dilution for 1h. DAPI was used to stain the cell nuclei (blue) at a concentration of 1.43µM.

Please note: All products are "FOR RESEARCH USE ONLY. NOT FOR USE IN DIAGNOSTIC PROCEDURES"

Our Abpromise to you: Quality guaranteed and expert technical support

- Replacement or refund for products not performing as stated on the datasheet
- Valid for 12 months from date of delivery
- Response to your inquiry within 24 hours

- We provide support in Chinese, English, French, German, Japanese and Spanish
- Extensive multi-media technical resources to help you
- We investigate all quality concerns to ensure our products perform to the highest standards

If the product does not perform as described on this datasheet, we will offer a refund or replacement. For full details of the Abpromise, please visit <https://www.abcam.co.jp/abpromise> or contact our technical team.

Terms and conditions

- Guarantee only valid for products bought direct from Abcam or one of our authorized distributors