


FITC Anti-CD8 alpha antibody [3-298] ab24910

画像数 1

製品の概要

製品名	FITC Anti-CD8 alpha antibody [3-298]
製品の詳細	FITC Mouse monoclonal [3-298] to CD8 alpha
由来種	Mouse
標識	FITC. Ex: 493nm, Em: 528nm
特異性	This antibody recognises CD8a.
アプリケーション	適用あり: Flow Cyt
種交差性	交差種: Chicken 交差が予測される動物種: Turkey 
免疫原	Tissue, cells or virus corresponding to CD8 alpha. Chicken thymocytes
ポジティブ・コントロール	Flow Cyt: Chicken peripheral blood lymphocytes.
特記事項	<p>In chicken, the CD8 molecule is present in two forms: (i) a homodimer of two alpha chains, and (ii) a heterodimer of an alpha chain and a beta chain. Chicken CD8 is expressed on approximately 80% of thymocytes, 45% of blood mononuclear cells and 50% of spleen cells, but <1% of cells in the bursa and bone marrow. While the vast majority of CD8+ cells in the thymus, spleen, and blood of adult chickens express both CD8 alpha and CD8 beta chains, a relatively large proportion of the CD8+ TCR gamma delta cells in the spleens of embryos and young chicks express only the alpha chain of CD8. Among intestinal epithelial lymphocytes, the major CD8+ T cell populations present in mice are conserved, but there is a population of TCR gamma delta CD8 alpha beta cells in the chicken that is not found in rodents.</p>

製品の特性

製品の状態	Liquid
保存方法	Shipped at 4°C. Store at +4°C. Store In the Dark.
バッファー	pH: 7.4 Preservative: 0.1% Sodium azide Constituent: PBS
精製度	Affinity purified
一次抗体 備考	In chicken, the CD8 molecule is present in two forms: (i) a homodimer of two alpha chains, and (ii) a heterodimer of an alpha chain and a beta chain. Chicken CD8 is expressed on approximately

80% of thymocytes, 45% of blood mononuclear cells and 50% of spleen cells, but <1% of cells in the bursa and bone marrow. While the vast majority of CD8+ cells in the thymus, spleen, and blood of adult chickens express both CD8 alpha and CD8 beta chains, a relatively large proportion of the CD8+ TCR gamma delta cells in the spleens of embryos and young chicks express only the alpha chain of CD8. Among intestinal epithelial lymphocytes, the major CD8+ T cell populations present in mice are conserved, but there is a population of TCR gamma delta CD8 alpha beta cells in the chicken that is not found in rodents.

ポリ/モノ	モノクローナル
クローン名	3-298
アイソタイプ	IgG2b
軽鎖の種類	kappa

アプリケーション

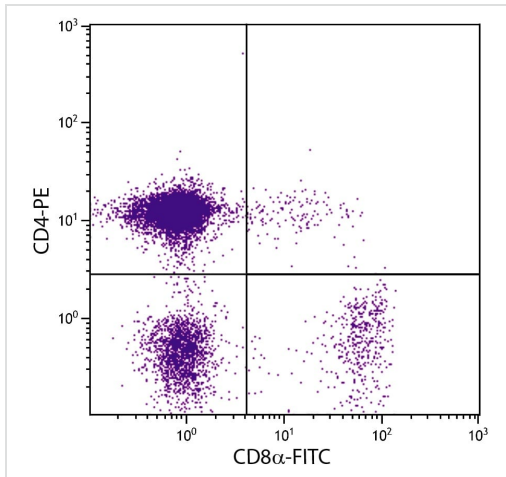
The Abpromise guarantee **Abpromise保証は、次のテスト済みアプリケーションにおけるab24910の使用に適用されます**
 アプリケーションノートには、推奨の開始希釈率がありますが、適切な希釈率につきましてはご検討ください。

アプリケーション	Abreviews	特記事項
Flow Cyt		Use at an assay dependent concentration.

ターゲット情報

機能	Identifies cytotoxic/suppressor T-cells that interact with MHC class I bearing targets. CD8 is thought to play a role in the process of T-cell mediated killing. CD8 alpha chains binds to class I MHC molecules alpha-3 domains.
関連疾患	Defects in CD8A are a cause of familial CD8 deficiency (CD8 deficiency) [MIM:608957]. Familial CD8 deficiency is a novel autosomal recessive immunologic defect characterized by absence of CD8+ cells, leading to recurrent bacterial infections.
配列類似性	Contains 1 Ig-like V-type (immunoglobulin-like) domain.
翻訳後修飾	All of the five most carboxyl-terminal cysteines form inter-chain disulfide bonds in dimers and higher multimers, while the four N-terminal cysteines do not.
細胞内局在	Secreted and Cell membrane.

画像



Flow Cytometry - Anti-CD8 alpha antibody [3-298] (FITC) (ab24910)

Chicken peripheral blood lymphocytes were costained using CD8 alpha-FITC and CD4-PE to distinguish cell subpopulations. Cells were incubated with anti-CD8 alpha antibody [3-298] (FITC) (ab24910) at $1 \mu\text{g}/10^6$ cells.

Please note: All products are "FOR RESEARCH USE ONLY. NOT FOR USE IN DIAGNOSTIC PROCEDURES"

Our Abpromise to you: Quality guaranteed and expert technical support

- Replacement or refund for products not performing as stated on the datasheet
- Valid for 12 months from date of delivery
- Response to your inquiry within 24 hours
- We provide support in Chinese, English, French, German, Japanese and Spanish
- Extensive multi-media technical resources to help you
- We investigate all quality concerns to ensure our products perform to the highest standards

If the product does not perform as described on this datasheet, we will offer a refund or replacement. For full details of the Abpromise, please visit <https://www.abcam.co.jp/abpromise> or contact our technical team.

Terms and conditions

- Guarantee only valid for products bought direct from Abcam or one of our authorized distributors