

### FITC Anti-CD62L antibody [DREG-56] ab95140

**6 References** [画像数 2](#)

#### 製品の概要

製品名	FITC Anti-CD62L antibody [DREG-56]
製品の詳細	FITC Mouse monoclonal [DREG-56] to CD62L
由来種	Mouse
標識	FITC. Ex: 493nm, Em: 528nm
アプリケーション	<b>適用あり:</b> Flow Cyt
種交差性	<b>交差種:</b> Human
免疫原	Tissue, cells or virus corresponding to Human CD62L. PMA-activated Human peripheral blood leukocytes
ポジティブ・コントロール	Flow Cyt: Neutrophil granulocytes in human peripheral whole blood.
特記事項	Free of unconjugated FITC.  The Life Science industry has been in the grips of a reproducibility crisis for a number of years. Abcam is leading the way in addressing this with our range of recombinant monoclonal antibodies and knockout edited cell lines for gold-standard validation. Please check that this product meets your needs before purchasing.  If you have any questions, special requirements or concerns, please send us an inquiry and/or contact our Support team ahead of purchase. Recommended alternatives for this product can be found below, along with publications, customer reviews and Q&As

#### 製品の特性

製品の状態	Liquid
保存方法	Shipped at 4°C. Store at +4°C.
バッファー	pH: 7.4 Preservative: 0.097% Sodium azide Constituents: 0.2% BSA, PBS
精製度	Size exclusion
ポリ/モノ	モノクローナル
クローン名	DREG-56
アイソタイプ	IgG1

## アプリケーション

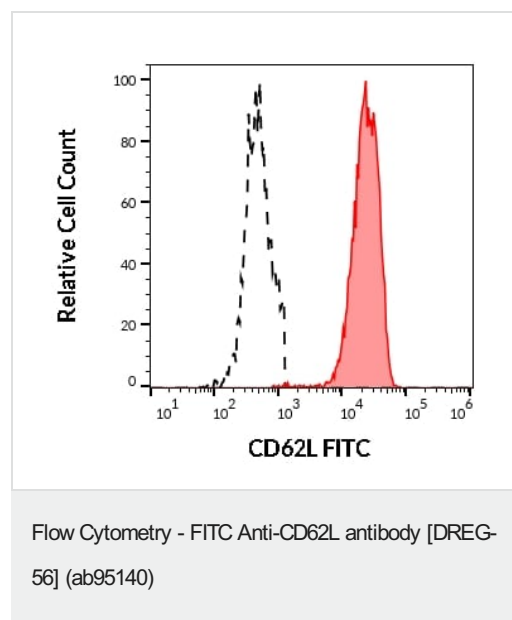
**The Abpromise guarantee**      Abpromise保証は、次のテスト済みアプリケーションにおけるab95140の使用に適用されます  
アプリケーションノートには、推奨の開始希釈率がありますが、適切な希釈率につきましてはご確認ください。

アプリケーション	Abreviews	特記事項
Flow Cyt		Use at an assay dependent concentration. 20 µl reagent / 100 µl of whole blood or 10 <sup>6</sup> cells in a suspension

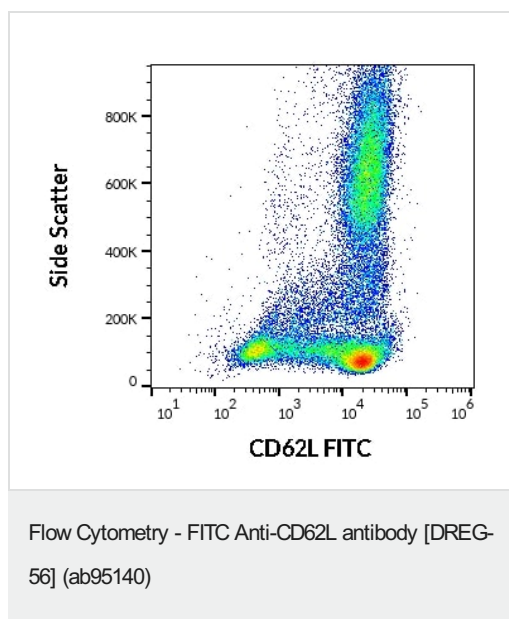
## ターゲット情報

機能	Cell surface adhesion protein. Mediates the adherence of lymphocytes to endothelial cells of high endothelial venules in peripheral lymph nodes. Promotes initial tethering and rolling of leukocytes in endothelia.
組織特異性	Expressed in B cell lines and T lymphocytes.
配列類似性	Belongs to the selectin/LECAM family. Contains 1 C-type lectin domain. Contains 1 EGF-like domain. Contains 2 Sushi (CCP/SCR) domains.
細胞内局在	Membrane.

## 画像



Flow Cytometry analysis (surface staining) of CD62L in human peripheral whole blood stained using ab95140 at (20 µL reagent/100 µL of peripheral whole blood). CD62L positive human neutrophil granulocytes (red-filled) and CD62L negative lymphocytes (black-dashed).



Flow cytometry surface staining of CD62L in human peripheral blood using ab95140 at (20  $\mu$ L reagent/100  $\mu$ L of peripheral whole blood).

**Please note:** All products are "FOR RESEARCH USE ONLY. NOT FOR USE IN DIAGNOSTIC PROCEDURES"

### Our Abpromise to you: Quality guaranteed and expert technical support

---

- Replacement or refund for products not performing as stated on the datasheet
- Valid for 12 months from date of delivery
- Response to your inquiry within 24 hours
- We provide support in Chinese, English, French, German, Japanese and Spanish
- Extensive multi-media technical resources to help you
- We investigate all quality concerns to ensure our products perform to the highest standards

If the product does not perform as described on this datasheet, we will offer a refund or replacement. For full details of the Abpromise, please visit <https://www.abcam.co.jp/abpromise> or contact our technical team.

### Terms and conditions

---

- Guarantee only valid for products bought direct from Abcam or one of our authorized distributors