


FITC Anti-CD48 antibody [MEM-102] ab21885

画像数 2

製品の概要

製品名	FITC Anti-CD48 antibody [MEM-102]
製品の詳細	FITC Mouse monoclonal [MEM-102] to CD48
由来種	Mouse
標識	FITC. Ex: 493nm, Em: 528nm
アプリケーション	適用あり: Flow Cyt
種交差性	交差種: Human 交差が予測される動物種: Non human primates 
免疫原	Tissue, cells or virus corresponding to CD48. Burkitt's lymphoma cell line Raji
ポジティブ・コントロール	Flow Cyt: Human peripheral whole blood.
特記事項	<p>The purified antibody is conjugated with Fluorescein isothiocyanate (FITC) under optimum conditions. The reagent is free of unconjugated FITC and adjusted for direct use.</p> <p>The Life Science industry has been in the grips of a reproducibility crisis for a number of years. Abcam is leading the way in addressing this with our range of recombinant monoclonal antibodies and knockout edited cell lines for gold-standard validation. Please check that this product meets your needs before purchasing.</p> <p>If you have any questions, special requirements or concerns, please send us an inquiry and/or contact our Support team ahead of purchase. Recommended alternatives for this product can be found below, along with publications, customer reviews and Q&As</p>

製品の特性

製品の状態	Liquid
保存方法	Shipped at 4°C. Store at +4°C.
バッファー	pH: 7.40 Preservative: 0.097% Sodium azide Constituents: PBS, BSA
精製度	Protein G purified
ポリ/モノ	モノクローナル
クローン名	MEM-102
アイソタイプ	IgG1

アプリケーション

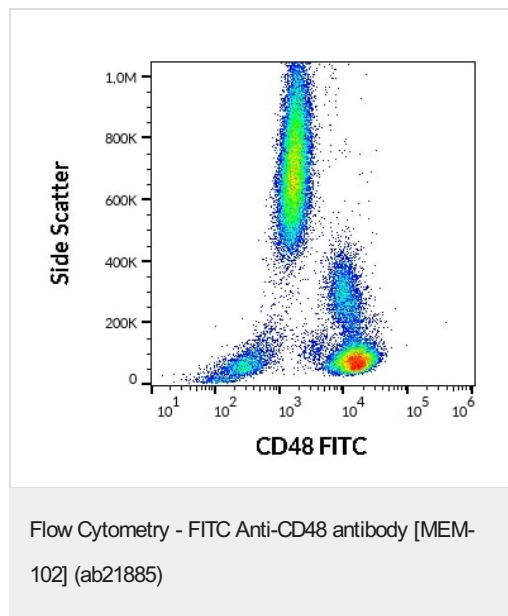
The Abpromise guarantee **Abpromise保証は、**次のテスト済みアプリケーションにおけるab21885の使用に適用されます
アプリケーションノートには、推奨の開始希釈率がありますが、適切な希釈率につきましてはご検討ください。

アプリケーション	Abreviews	特記事項
Flow Cyt		Use at an assay dependent concentration. Use 20µl per 100µl whole blood.

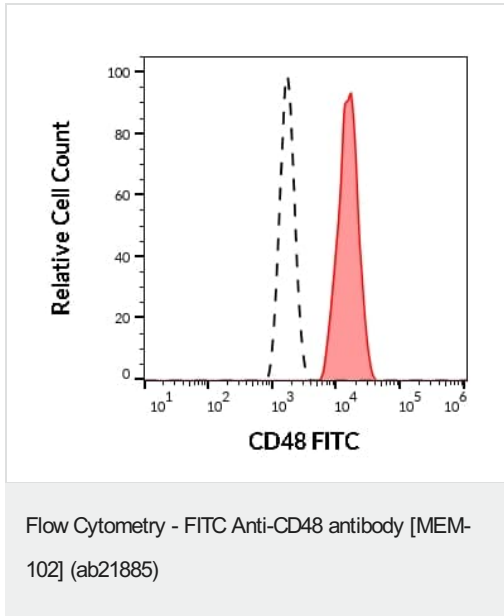
ターゲット情報

機能	Ligand for CD2. Might facilitate interaction between activated lymphocytes. Probably involved in regulating T-cell activation.
配列類似性	Contains 1 Ig-like C2-type (immunoglobulin-like) domain. Contains 1 Ig-like V-type (immunoglobulin-like) domain.
細胞内局在	Cell membrane.

画像



Flow cytometry surface staining pattern of human peripheral whole blood stained using anti-CD48 antibody [MEM-102] (ab21885) at 20 µL/100 µL of peripheral whole blood.



Flow cytometry analysis (surface staining) of human peripheral whole blood stained using Anti-CD48 antibody [MEM-102] (ab21885) (20 μ L reagent/100 μ L of peripheral whole blood). CD48 positive lymphocytes (red-filled). CD48 negative neutrophil granulocytes (black-dashed).

Please note: All products are "FOR RESEARCH USE ONLY. NOT FOR USE IN DIAGNOSTIC PROCEDURES"

Our Abpromise to you: Quality guaranteed and expert technical support

- Replacement or refund for products not performing as stated on the datasheet
- Valid for 12 months from date of delivery
- Response to your inquiry within 24 hours
- We provide support in Chinese, English, French, German, Japanese and Spanish
- Extensive multi-media technical resources to help you
- We investigate all quality concerns to ensure our products perform to the highest standards

If the product does not perform as described on this datasheet, we will offer a refund or replacement. For full details of the Abpromise, please visit <https://www.abcam.co.jp/abpromise> or contact our technical team.

Terms and conditions

- Guarantee only valid for products bought direct from Abcam or one of our authorized distributors